

# ***REQUEST FOR LEGISLATIVE APPROPRIATIONS***

For Fiscal Years 2018 and 2019

Submitted to the  
Governor's Office of Budget and Planning  
and the Legislative Budget Board

by

**Texas A&M International University**



Revised October 17, 2016



## CERTIFICATE

**Agency Name** Texas A&M International University

This is to certify that the information contained in the agency Legislative Appropriation Request filed with the Legislative Budget Board (LBB) and the Office of the Governor, Budget Division, is accurate to the best of my knowledge and that the electronic submission to the LBB via the Automated Budget and Evaluation System of Texas (ABEST) and the PDF file submitted via the LBB Document Submission application are identical.

Additionally, should it become likely at any time that unexpended balances will accrue for any account, the LBB and the Governor's office will be notified in writing in accordance with Article IX, Section 7.01 (2016-17 GAA).

**Chief Executive Officer or Presiding Judge**

  
Signature

Pablo Arenaz

Printed Name

Interim President

Title

August 4, 2016

Date

**Board or Commission Chair**

  
Signature

Cliff Thomas

Printed Name

Chairman, Board of Regents

Title

August 4, 2016

Date

**Chief Financial Officer**

  
Signature

Juan J. Castillo

Printed Name

Vice President for Finance & Administration

Title

August 4, 2016

Date

# TABLE OF CONTENTS

	<u>PAGE</u>
Administrator’s Statement.....	1
Agency Mission.....	6
Departmental Organizational Structure.....	7
Budget Overview – Biennial Amounts.....	8
Summary of Request	
Summary of Base Request by Strategy.....	9
Summary of Base Request by Method of Finance.....	13
Summary of Base Request by Object of Expense.....	18
Summary of Base Request by Objective Outcomes.....	19
Summary of Exceptional Items Request.....	22
Summary of Total Request by Strategy.....	23
Summary of Total Request Objective Outcomes.....	27
Strategy Request	
Provide Instructional and Operations Support	
Operations Support.....	31
Staff Group Insurance Premiums.....	35
Workers’ Compensation Insurance.....	37
Unemployment Compensation Insurance.....	39
Texas Public Education Grants.....	41
Provide Infrastructure Support	
Educational and General Space Support.....	43
Tuition Revenue Bond Retirement.....	46
Small Institution Supplement.....	48
Provide Special Item Support	
Academic and Student Support.....	50
Institute for International Trade.....	52

Small Business Development Center.....	55
Institutional Enhancement.....	58
Outreach and Enrollment.....	61
Exceptional Item Request.....	64
Research Funds	
Research Development Fund.....	66
Comprehensive Research Fund.....	68
Agency Summary.....	70
Program-Level Request Schedule.....	71
Exceptional Item Request Schedule	
Restoration of 4% Reduction.....	72
Interdisciplinary Engineering Degree Program.....	74
Si Texas Border Health Initiative.....	76
Exceptional Items Strategy Allocation Schedule.....	78
Exceptional Items Strategy Request.....	81
Supporting Schedules	
Historically Underutilized Business (HUB) Supporting Schedule.....	83
Estimated Funds Outside the Institution's Bill Pattern.....	84
Ten Percent Biennial Base Reduction Options.....	85
Higher Education Supporting Schedules	
Schedule 1A: Other Educational and General Income.....	87
Schedule 2: Selected Educational, General & Other Funds.....	90
Schedule 3B: Staff Group Insurance Data Elements (UT/ A&M).....	91
Schedule 4: Computation of OASI.....	94
Schedule 5: Calculation of Retirement Proportionality and ORP Differential.....	95
Schedule 6: Constitutional Capital Funding.....	96
Schedule 7: Personnel.....	97
Schedule 8D: Tuition Revenue Bonds Request by Project.....	99
Schedule 9: Special Item Information.....	100

## Schedules Not Included

<b>Agency Code:</b> 761	<b>Agency Name:</b> Texas A&M International University	<b>Prepared By:</b> Fred Juarez III	<b>Date:</b> 10/17/2016
----------------------------	---	--	----------------------------

For the schedules identified below, the Texas A&M International University administration has no information to report or the schedule is not applicable. Accordingly, these schedules have been excluded from the Texas A&M International University Legislative Appropriations Request for the 2018-2019 biennium.

### Schedule

Number	Name
3.C.	Rider Appropriations and Unexpended Balances Request
5.A-E	Capital Budget
6.C.	Federal Funds Supporting Schedule
6.D.	Federal Funds Tracking Schedule
6.E.	Estimated Revenue Collections Supporting Schedule
6.F.a.	Advisory Committee Supporting Schedule - Part A
6.F.b.	Advisory Committee Supporting Schedule - Part B
6.J.a.	Part A Budgetary Impacts Related to Federal Health Care Reform Schedule
6.J.b.	Part B Summary of Budgetary Impacts Related to Federal Health Care
7.A.	Indirect Administrative and Support Cost
7.B.	Direct Administrative and Support Costs
	Capital Budget Allocation to Strategies by Project - Exceptional
	Capital Budget Project Schedule - Exceptional
	Homeland Security Funding
Schedule 3A	Staff Group Insurance Data Elements (ERS)
Schedule 3D	Group Insurance Data Elements (Supplemental)
Schedule 5B	Tuition Revenue Bond Issuance History
Schedule 8A	Tuition Revenue Bond Projects
Schedule 8C	Revenue Capacity for Tuition Revenue Bond Projects

**Administrator's Statement**

10/10/2016 4:46:52PM

85th Regular Session, Agency Submission, Version 1  
Automated Budget and Evaluation System of Texas (ABEST)

---

**761 Texas A&M International University**

---

The South Texas Border Region:

As the nation's largest inland port, Laredo continues to be a thriving economic engine in a region propelled by the banking, international business, and manufacturing industries. In addition to the city's remarkable growth, 35% of its population is under 18 years of age, and 82% of those 25 years and older do not hold a baccalaureate degree—their children overwhelmingly the first in their family to attend college. For these young people to prosper economically and participate fully in the life of the State of Texas, a great proportion of them must enter and finish college.

Serving a young and productive population in a rapidly growing city, Texas A&M International University, too, has shared in this rapid growth. Its enrollment has more than doubled, mushrooming since 2001 to over 7,400 students. Thanks to the State's past investment and the University's prudent use of State funds to provide academic and financial support to these students, the University has proven its ability to attract, retain, and graduate students who in decades past would not have attended or graduated from college.

The University still has much it can do to fulfill its mission of improving "...the quality of lives for the citizens of the border region" and, given adequate needed funding, will continue its success in doing so.

Student Success:

Texas A&M International University aspires to become a premier international university of choice, serving as the agent of change for the people of the region, the nation, and the world through multicultural teaching, research, and service. Beginning with an aggressive outreach initiative taking crucial strategies for enrolling and succeeding at the University to high schools throughout the South Texas region, and anchored by a broad array of programs targeting academic success and personal growth, our Student Success Program unites the coordinated efforts of peer mentors, tutors, academic and financial advisors, and counselors.

The success of our program is evident in our enrollment growth, along with our retention and graduation rates of an overwhelmingly Hispanic population, most of whom (82%) receive some form of financial aid. The first-year, total, student persistence rate holds at 87%, and the six-year graduation rate is 49.2%. Over 80% of baccalaureate graduates are employed and/or enrolled in a graduate or professional school in Texas.

The University's accessibility, affordability and value added have earned national and international accolades. TAMIU was ranked No. 1 in the nation among the "Top 10 Colleges with the Highest Hispanic Enrollment" by U.S. News and World Report; 4th for "Best Bang for the Buck" among the nation's Southern Schools by Washington Monthly Magazine and 5th in Texas among schools providing the best value for tuition dollar, while earning a grade of "A" for value added for students by Money Magazine. The Economist ranked TAMIU 9th among the nation's Top 20 Colleges and Universities (the only Texas institution in the Top 20), specifically noting how the University boosts graduates' salaries above expectation.

Community College and Expanding School District Relationships:

Texas A&M International University has built a strong relationship with Laredo Community College (LCC). From 2+2 articulation agreements which ensure that students, while at LCC, enroll in courses necessary for their degree plan, to staffing an outreach office at the LCC campus to provide one-stop services to students wishing to transfer, the University and College share the goal of student success. The University pursues aggressive outreach to these students by conducting transfer fairs which assist students with the transition to the University. A \$3.8 million Department of Education Title V Grant enhances the transfer-student process, enabling students to seamlessly transition from an associate to a baccalaureate degree. This joint grant underscores University/College shared values improving the ease and transparency

## Administrator's Statement

10/10/2016 4:46:52PM

85th Regular Session, Agency Submission, Version 1  
Automated Budget and Evaluation System of Texas (ABEST)

---

### 761 Texas A&M International University

---

of the transfer process, so students maintain degree attainment focus. Participating students have earned a GPA .25 points higher than their non-participating transfer student counterparts in select, grant-focused courses. This partnership advances the educational goals of both institutions, but most importantly, those of the students.

As a regional University of choice, the University has also extended this model agreement, actively seeking new Memorandum of Understandings (MOUs) with other community colleges, including Southwest Texas Junior College (Uvalde), Alamo Colleges (San Antonio), and San Jacinto College (Pasadena).

Most importantly, the University is reaching out to future students at an even earlier juncture: Early College High Schools (ECHS). The University has been at the forefront of targeted collaborations with local and regional school districts to develop Early College High Schools. The first such partnership is the ECHS with Laredo Independent School District, located adjacent to the campus and now ranked 12th in the State and 72nd in the Nation among Best High Schools. An ECHS partnership with Freer ISD initiated in 2015 has dramatically impacted student STAARS scores in its first year of operation with students posting a 10% improvement. Finally, the third cohort for the University's Texas Academy of International and STEM Studies will be welcomed in fall 2016. The Academy was established by legislation approved by the 79th Texas Legislature, and provides an innovative, accelerated curriculum for motivated Texas high school students with research and collaborative opportunities with partners like the University of Texas Health Science Center-San Antonio.

#### Veterans' Affairs:

Texas A&M International University is committed to being military friendly by assisting all veterans with the transition to University life. Upon admission to the University, veterans have a one-on-one meeting with the veteran affairs coordinator to review specific degree plan requirements and University services. Thereafter, veterans are assisted each semester with the educational benefit certification process to ensure timely awarding of veteran benefits and advised of important, upcoming events and deadlines. The veteran affairs coordinator also works with Laredo Community College and other institutions of higher education to assist veterans transferring between institutions to ensure accurate and timely benefit awards.

#### High Priority Requests of The Texas A&M University System:

We recognize the financial situation facing the State of Texas and the difficult budget decisions that face the 85th Legislature. We also appreciate the efforts through zero-based budgeting to focus spending on the highest priority and most efficient activities that are vital investments to the future well-being of the State of Texas. As we testified last session, TAMUS has engaged in similar exercises since 2011. We have eliminated administrative positions and discontinued performing certain functions that are not core to our mission and redirected those savings to classrooms, research labs, and public service.

Even as we continue to look for ways to improve our efficiency, we must also be clear that 4% reductions to budgets that have already been diligently scrubbed and reprioritized will mean we are left to manage significant budget reductions directly impacting teaching and support services to our students; reductions to significant research projects that directly impact our State's economy; and reductions in outreach and service efforts on which many citizens and public entities depend. Although a last resort, increased tuition may have to be considered to maintain the quality of programs and services you have charged us to provide. For these reasons, we respectfully request that you restore the 4% reduction in our baseline requests for both the formula and non-formula strategies.

Base Funding – Formula funding is the foundation our institutions depend upon to provide high quality teaching and support services for growing student populations to prepare them to meet the workforce needs of this state. The teaching function of our institutions is supported by two key sources of funding: state appropriations primarily through the formulas and students' tuition and fees. Our number one priority is maintaining the current formula funding rates in the base bill and in the final conference committee bill in order to cover enrollment growth through the spring 2017 semester. Any additional funding you can provide through the formulas to

**Administrator's Statement**

10/10/2016 4:46:52PM

85th Regular Session, Agency Submission, Version 1  
Automated Budget and Evaluation System of Texas (ABEST)

---

**761 Texas A&M International University**

---

increase the rates to cover the cost of inflation on the state's share of the cost of educating students will help us keep our tuition and fees more manageable while also offering the courses and support services necessary to help students graduate in a timely manner.

Our A&M Agencies need base funding support much in the same manner as the formulas that provide basic, on-going support for the academics and health related institutions.

We also request support for other base funding streams be maintained at current levels, including support for research through the Texas Research University Fund and the Comprehensive University Fund and the continuation of Institutional Enhancement.

New Performance Measures – The performance measures added for higher education are important indicators for the legislature to track. We are glad to provide this outcome information. Out-year projections for these measures are held to current levels in this document. Tuition & fee charges and student debt measures are so closely connected to legislative appropriations that accurate projections for the future cannot be made at this time without a better indication of future funding amounts. However, regardless of appropriations levels, TAMUS commits to hold tuition at the lowest levels financially prudent and to look for every way to assist students in graduating well prepared, on time, and with the least debt possible.

Outcomes Based Funding - Our Board is increasingly incorporating performance and outcomes into our internal budget review processes. We welcome a continued dialog on this issue during the legislative session.

Capital – Thank you for the commitment you made to higher education last session through the increase in the Higher Education Fund and the authorization for facilities to address our critically needed classrooms and labs. We have moved forward immediately to build the critical teaching and research space you approved so we very much appreciate the policy letter exemption for appropriations needed to satisfy debt service requirements. We expect to have binding contracts on all of our projects that will require two years of debt service to ensure funding is available to satisfy those contracts. Providing the second year of debt service appropriations for the 2018-19 biennium is of the utmost importance to keep the projects on track.

Higher Education Group Health Insurance – We request funding to cover increases in enrollments and in health care costs that are beyond control. We also request restoration of some increment of the differential funding level for our employees' group insurance as compared to that provided for other state employees who are covered in the ERS group insurance plan.

Student Financial Aid – Thank you for the increase in financial aid for students last session; students and their families are the beneficiaries. Because it is so important to these families, we request increased support for student financial aid, including TEXAS Grants and other financial aid programs. However, please recognize that since it is a method of paying for tuition and fees that otherwise would have to be paid by students and their families, student financial aid does not increase much needed funding for the universities.

We appreciate the relief provided by the 84th Legislature for the Hazlewood Legacy program that supports our veteran students and veterans' families. While we do not anticipate that the recent court ruling will cause an increase in the already rapid growth in the veteran students and their families served through the Hazlewood program, the current rates of growth of Legacy students continue to be an increasing cost to our institutions.

High Priority Requests for Texas A&M International University:



**Administrator's Statement**

10/10/2016 4:46:52PM

85th Regular Session, Agency Submission, Version 1  
Automated Budget and Evaluation System of Texas (ABEST)

---

**761 Texas A&M International University**

---

Base funding for the University consists of formula funding and the \$17,035,482 in three special items that are devoted to support and achieve students' retention and graduation success, namely: Institutional Enhancement (\$11,853,452), Academic and Student Support (\$3,682,030), and Outreach and Enrollment (\$1,500,000). Together, these three special item strategies fund 49% of Education & General (E&G) faculty and are therefore an integral part of the base funding for the University. Maintaining the success of graduating the students of the South Texas region depends upon continued appropriation of this base funding.

Existing Special Items – It is also vital that the University retain the funding for its remaining special items which include \$390,054 for the Institute for International Trade (IIT) and \$363,000 for the Small Business Development Center (SBDC). The IIT publishes the highly regarded International Trade Journal, a source of scholarship for faculty, students and the general academic community, and supports vital research to enhance the border region's competitive position. The SBDC also supports research with applied economics projects and provides for economic development by increasing capital access, business starts and expansions, job creation, and retention.

Exceptional Items – The University is requesting the following exceptional item to provide the resources necessary to sustain growth and achieve the goals of the Coordinating Board's 60x30TX plan:

- Restoration of the 4% reduction - \$702,638 (biennial amount) – This item will permit Texas A&M International University to maintain its educational offerings and success in retaining and graduating its students.
- Interdisciplinary Engineering Degree Program - \$6,000,000 (biennial amount, expiring after 3 biennia) – This item will permit Texas A&M International University to expand its existing engineering offerings to include a focus on petroleum engineering and computer science.
- Si Texas Border Health Initiative - \$2,400,000 (biennial amount, expiring after 2 biennia) - A collaborative effort between Texas A&M International University and nine community health care service providers, this item will support a fully coordinated, comprehensive health care delivery system in Laredo and the surrounding region.

Capital Projects – The University has a calculated deficit of 229,336 square feet according to the Texas Higher Education Coordinating Board (as of fall 2015), and is grateful for the capital project approved last legislative session which will help reduce this deficit. Although we believe we have a real need to renovate our Kinesiology and Convocation Building to create a larger indoor space for University-wide events and add on to our Fine and Performing Arts building to expand our offerings in these disciplines, realizing the economic impact of the drop in the price of oil, no capital projects are being requested at this time.

Effects of a 4% Reduction:

A 4% reduction for the University amounts to \$702,638. The University has proactively looked for savings since the cuts of 2003, eliminating various administrative positions and outsourcing its foodservice, bookstore, custodial, and housing operations. Under the leadership of Chancellor John Sharp, in FY 2013, the remaining facilities operations were outsourced, and in FY 2014, a System-wide study by Price Waterhouse Coopers identified additional opportunities to redirect savings into the instructional mission of the University. As previously discussed, the University is dependent on three special item strategies to fund 49% of E&G faculty, with formula funding covering the balance. The generous increases of the past two sessions have still left the University just below its appropriation prior to the 2011 cuts, and we fear additional cuts now will negatively impact our ability to provide quality instruction to our students.

Effects of a 10% Reduction:

A 10% reduction for the University amounts to \$1,686,331. A reduction of this significance would almost certainly result in layoffs and the replacement of full-time

**Administrator's Statement**

10/10/2016 4:46:52PM

85th Regular Session, Agency Submission, Version 1  
Automated Budget and Evaluation System of Texas (ABEST)

---

**761 Texas A&M International University**

---

faculty with lower-cost adjuncts. Unfortunately, the scarcity of qualified adjuncts in the Laredo region makes it impossible to substitute adjuncts for full-time faculty without compromising the quality of the academic programs. It is very likely that a reduction of academic program offerings would also follow. The University would have to restructure and downsize significantly, resulting in a substantial reduction in enrollment.

**Criminal Background Checks:**

The University has a University rule which outlines the process for conducting criminal background checks on all new hires in accordance with Texas A&M University System regulations.

**Summary of Request:**

The creation of Texas A&M International University has brought new life to the citizens of South Texas. Today, TAMIU is a University of choice providing access to excellence focused on a measurably better life for all. With appropriate resources, the overwhelmingly Hispanic young men and women of this region build better lives of meaning and purpose for themselves, their families and the State of Texas. Adequate funding to sustain existing and new initiatives will ensure fulfillment of the University's mission, support student success, achieve the goals of the 60x30TX plan, and continue to extend the great American dream to all.

**SESSION AGENCY MISSION**

85th Regular Session, Agency Submission, Version 1  
Automated Budget and Evaluation System of Texas (ABEST)

DATE: 10/10/2016

TIME: 4:46:52PM

PAGE: 1 OF 1

---

Agency code: **761**

Agency name: **Texas A&M International University**

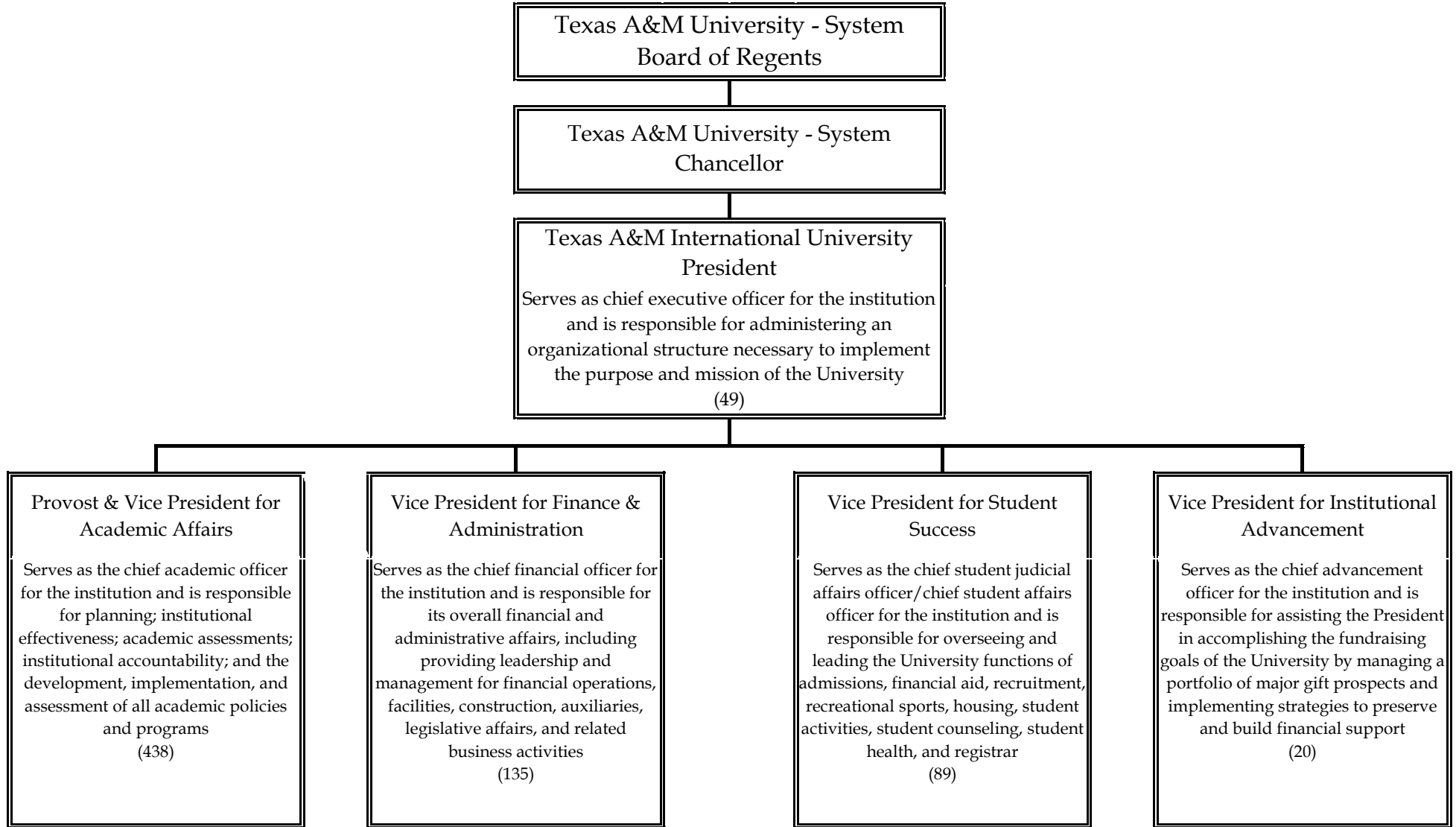
**AGENCY MISSION**

---

Texas A&M International University (TAMIU), a member of The Texas A&M University System, prepares students for leadership roles in an increasingly complex, culturally diverse state, national, and global society. TAMIU provides a learning environment built on a solid academic foundation in the arts and sciences. The University offers a range of baccalaureate and master's programs and the Doctor of Philosophy degree in International Business Administration. In addition, the University pursues a progressive agenda for global study and understanding across all disciplines.

Through instruction, faculty and student research, and public service, Texas A&M International improves the quality of lives for citizens of the border region, the state of Texas, and national and international communities.

# TEXAS A&M INTERNATIONAL UNIVERSITY™



**Budget Overview - Biennial Amounts**  
**85th Regular Session, Agency Submission, Version 1**  
Automated Budget and Evaluation System of Texas (ABEST)

761 Texas A&M International University  
Appropriation Years: 2018-19

EXCEPTIONAL  
ITEM  
FUNDS

	GENERAL REVENUE FUNDS		GR DEDICATED		FEDERAL FUNDS		OTHER FUNDS		ALL FUNDS		2018-19	
	2016-17	2018-19	2016-17	2018-19	2016-17	2018-19	2016-17	2018-19	2016-17	2018-19		
<b>Goal: 1. Provide Instructional and Operations Support</b>												
1.1.1. Operations Support	25,662,879		11,725,901						37,388,780			
1.1.3. Staff Group Insurance Premiums			1,927,428	2,113,316					1,927,428	2,113,316		
1.1.4. Workers' Compensation Insurance	52,782	52,782							52,782	52,782		
1.1.5. Unemployment Compensation Insurance	398	398							398	398		
1.1.6. Texas Public Education Grants			2,431,004	2,460,019					2,431,004	2,460,019		
<b>Total, Goal</b>	<b>25,716,059</b>	<b>53,180</b>	<b>16,084,333</b>	<b>4,573,335</b>					<b>41,800,392</b>	<b>4,626,515</b>		
<b>Goal: 2. Provide Infrastructure Support</b>												
2.1.1. E&G Space Support	5,059,452		1,856,774						6,916,226			
2.1.2. Tuition Revenue Bond Retirement	17,556,146	17,316,858							17,556,146	17,316,858		
2.1.5. Small Institution Supplement	733,800								733,800			
<b>Total, Goal</b>	<b>23,349,398</b>	<b>17,316,858</b>	<b>1,856,774</b>						<b>25,206,172</b>	<b>17,316,858</b>		
<b>Goal: 3. Provide Special Item Support</b>												
3.1.3. Academic And Student Support	3,682,030	2,979,392							3,682,030	2,979,392	702,638	
3.3.1. Institute For International Trade	114,280	114,280	149,786	149,786			275,774	275,774	539,840	539,840		
3.3.2. Small Business Development Center	363,000	363,000							363,000	363,000		
3.4.1. Institutional Enhancement	11,853,452	11,853,452							11,853,452	11,853,452		
3.4.3. Outreach And Enrollment	1,500,000	1,500,000							1,500,000	1,500,000		
3.5.1. Exceptional Item Request											8,400,000	
<b>Total, Goal</b>	<b>17,512,762</b>	<b>16,810,124</b>	<b>149,786</b>	<b>149,786</b>			<b>275,774</b>	<b>275,774</b>	<b>17,938,322</b>	<b>17,235,684</b>	<b>9,102,638</b>	
<b>Goal: 6. Research Funds</b>												
6.3.1. Comprehensive Research Fund	426,618								426,618			
<b>Total, Goal</b>	<b>426,618</b>								<b>426,618</b>			
<b>Total, Agency</b>	<b>67,004,837</b>	<b>34,180,162</b>	<b>18,090,893</b>	<b>4,723,121</b>			<b>275,774</b>	<b>275,774</b>	<b>85,371,504</b>	<b>39,179,057</b>	<b>9,102,638</b>	
<b>Total FTEs</b>									<b>520.0</b>	<b>515.0</b>	<b>24.0</b>	

2.A. Summary of Base Request by Strategy

10/10/2016 4:47:08PM

85th Regular Session, Agency Submission, Version 1

Automated Budget and Evaluation System of Texas (ABEST)

761 Texas A&M International University

Goal / Objective / STRATEGY	Exp 2015	Est 2016	Bud 2017	Req 2018	Req 2019
<b>1</b> Provide Instructional and Operations Support					
<b>1</b> Provide Instructional and Operations Support					
<b>1 OPERATIONS SUPPORT</b> (1)	14,742,851	18,698,930	18,689,850	0	0
<b>3 STAFF GROUP INSURANCE PREMIUMS</b>	797,573	870,770	1,056,658	1,056,658	1,056,658
<b>4 WORKERS' COMPENSATION INSURANCE</b>	49,051	26,391	26,391	26,391	26,391
<b>5 UNEMPLOYMENT COMPENSATION INSURANCE</b>	5,807	199	199	199	199
<b>6 TEXAS PUBLIC EDUCATION GRANTS</b>	1,172,705	1,219,232	1,211,772	1,223,890	1,236,129
<b>TOTAL, GOAL</b> <b>1</b>	<b>\$16,767,987</b>	<b>\$20,815,522</b>	<b>\$20,984,870</b>	<b>\$2,307,138</b>	<b>\$2,319,377</b>
<b>2</b> Provide Infrastructure Support					
<b>1</b> Provide Operation and Maintenance of E&G Space					
<b>1 E&amp;G SPACE SUPPORT</b> (1)	2,955,971	3,458,113	3,458,113	0	0
<b>2 TUITION REVENUE BOND RETIREMENT</b>	7,795,114	6,636,348	10,919,798	8,660,091	8,656,767
<b>5 SMALL INSTITUTION SUPPLEMENT</b> (1)	422,126	366,900	366,900	0	0

(1) - Formula funded strategies are not requested in 2018-19 because amounts are not determined by institutions.

2.A. Summary of Base Request by Strategy

10/10/2016 4:47:08PM

85th Regular Session, Agency Submission, Version 1

Automated Budget and Evaluation System of Texas (ABEST)

761 Texas A&M International University

Goal / Objective / STRATEGY		Exp 2015	Est 2016	Bud 2017	Req 2018	Req 2019
<b>TOTAL, GOAL</b>	<b>2</b>	<b>\$11,173,211</b>	<b>\$10,461,361</b>	<b>\$14,744,811</b>	<b>\$8,660,091</b>	<b>\$8,656,767</b>
<b>3</b> Provide Special Item Support						
<b>1</b> Instructional Support Special Item Support						
<b>3</b> ACADEMIC AND STUDENT SUPPORT		1,841,015	1,841,015	1,841,015	1,489,696	1,489,696
<b>3</b> Public Service Special Item Support						
<b>1</b> INSTITUTE FOR INTERNATIONAL TRADE		300,500	269,920	269,920	269,920	269,920
<b>2</b> SMALL BUSINESS DEVELOPMENT CENTER		182,931	181,500	181,500	181,500	181,500
<b>4</b> Institutional Support Special Item Support						
<b>1</b> INSTITUTIONAL ENHANCEMENT		6,031,718	5,926,726	5,926,726	5,926,726	5,926,726
<b>3</b> OUTREACH AND ENROLLMENT		764,899	750,000	750,000	750,000	750,000
<b>5</b> Exceptional Item Request						
<b>1</b> EXCEPTIONAL ITEM REQUEST		0	0	0	0	0
<b>TOTAL, GOAL</b>	<b>3</b>	<b>\$9,121,063</b>	<b>\$8,969,161</b>	<b>\$8,969,161</b>	<b>\$8,617,842</b>	<b>\$8,617,842</b>

2.A. Summary of Base Request by Strategy

10/10/2016 4:47:08PM

85th Regular Session, Agency Submission, Version 1

Automated Budget and Evaluation System of Texas (ABEST)

761 Texas A&M International University

Goal / Objective / STRATEGY	Exp 2015	Est 2016	Bud 2017	Req 2018	Req 2019
<b>6</b> Research Funds					
<u>1</u> Research Funds					
<b>1 RESEARCH DEVELOPMENT FUND</b>	246,539	0	0	0	0
<u>3</u> Comprehensive Research Fund					
<b>1 COMPREHENSIVE RESEARCH FUND</b>	0	213,309	213,309	0	0
<b>TOTAL, GOAL</b> <b>6</b>	<b>\$246,539</b>	<b>\$213,309</b>	<b>\$213,309</b>	<b>\$0</b>	<b>\$0</b>
<b>TOTAL, AGENCY STRATEGY REQUEST</b>	<b>\$37,308,800</b>	<b>\$40,459,353</b>	<b>\$44,912,151</b>	<b>\$19,585,071</b>	<b>\$19,593,986</b>
<b>TOTAL, AGENCY RIDER APPROPRIATIONS REQUEST*</b>				<b>\$0</b>	<b>\$0</b>
<b>GRAND TOTAL, AGENCY REQUEST</b>	<b>\$37,308,800</b>	<b>\$40,459,353</b>	<b>\$44,912,151</b>	<b>\$19,585,071</b>	<b>\$19,593,986</b>



2.A. Summary of Base Request by Strategy

10/10/2016 4:47:08PM

85th Regular Session, Agency Submission, Version 1

Automated Budget and Evaluation System of Texas (ABEST)

761 Texas A&M International University

Goal / Objective / STRATEGY	Exp 2015	Est 2016	Bud 2017	Req 2018	Req 2019
<u>METHOD OF FINANCING:</u>					
<b>General Revenue Funds:</b>					
1 General Revenue Fund	28,950,642	31,330,800	35,674,037	17,091,743	17,088,419
<b>SUBTOTAL</b>	<b>\$28,950,642</b>	<b>\$31,330,800</b>	<b>\$35,674,037</b>	<b>\$17,091,743</b>	<b>\$17,088,419</b>
<b>General Revenue Dedicated Funds:</b>					
704 Bd Authorized Tuition Inc	379,368	378,659	379,829	0	0
770 Est Oth Educ & Gen Inco	7,840,903	8,612,007	8,720,398	2,355,441	2,367,680
<b>SUBTOTAL</b>	<b>\$8,220,271</b>	<b>\$8,990,666</b>	<b>\$9,100,227</b>	<b>\$2,355,441</b>	<b>\$2,367,680</b>
<b>Other Funds:</b>					
777 Interagency Contracts	137,887	137,887	137,887	137,887	137,887
<b>SUBTOTAL</b>	<b>\$137,887</b>	<b>\$137,887</b>	<b>\$137,887</b>	<b>\$137,887</b>	<b>\$137,887</b>
<b>TOTAL, METHOD OF FINANCING</b>	<b>\$37,308,800</b>	<b>\$40,459,353</b>	<b>\$44,912,151</b>	<b>\$19,585,071</b>	<b>\$19,593,986</b>

\*Rider appropriations for the historical years are included in the strategy amounts.

2.B. Summary of Base Request by Method of Finance  
 85th Regular Session, Agency Submission, Version 1  
 Automated Budget and Evaluation System of Texas (ABEST)

10/10/2016 4:47:09PM

Agency code: **761** Agency name: **Texas A&M International University**

METHOD OF FINANCING	Exp 2015	Est 2016	Bud 2017	Req 2018	Req 2019
<b><u>GENERAL REVENUE</u></b>					
<b><u>1</u></b> General Revenue Fund					
<i>REGULAR APPROPRIATIONS</i>					
Regular Appropriations from MOF (2014-15 GAA)	\$29,117,525	\$0	\$0	\$0	\$0
<b>Comments:</b> 83rd Texas Legislature Regular Session					
Regular Appropriations from MOF (2016-17 GAA)	\$0	\$31,330,800	\$31,404,554	\$17,091,743	\$17,088,419
<b>Comments:</b> 84th Texas Legislature Regular Session					
<i>TRANSFERS</i>					
Art III, Special Provision for Higher Education, Sec 60, Contingency for HB 100 (2016-17 GAA)	\$0	\$0	\$4,269,483	\$0	\$0
<b>Comments:</b> TRB Debt Service Allocation					
<i>LAPSED APPROPRIATIONS</i>					
FY 2015 Lapse of GR for TRB Debt Service Payments.	\$(166,883)	\$0	\$0	\$0	\$0
<b>TOTAL, General Revenue Fund</b>	<b>\$28,950,642</b>	<b>\$31,330,800</b>	<b>\$35,674,037</b>	<b>\$17,091,743</b>	<b>\$17,088,419</b>

2.B. Summary of Base Request by Method of Finance

10/10/2016 4:47:09PM

85th Regular Session, Agency Submission, Version 1

Automated Budget and Evaluation System of Texas (ABEST)

Agency code:	<b>761</b>	Agency name:	<b>Texas A&amp;M International University</b>			
<b>METHOD OF FINANCING</b>		<b>Exp 2015</b>	<b>Est 2016</b>	<b>Bud 2017</b>	<b>Req 2018</b>	<b>Req 2019</b>
<b>TOTAL, ALL GENERAL REVENUE</b>		<b>\$28,950,642</b>	<b>\$31,330,800</b>	<b>\$35,674,037</b>	<b>\$17,091,743</b>	<b>\$17,088,419</b>

**GENERAL REVENUE FUND - DEDICATED**

**704** GR Dedicated - Estimated Board Authorized Tuition Increases Account No. 704

*REGULAR APPROPRIATIONS*

Regular Appropriations from MOF (2014-15 GAA)

\$357,342	\$0	\$0	\$0	\$0
-----------	-----	-----	-----	-----

**Comments:** 83rd Texas Legislature Regular Session

Regular Appropriations from MOF (2016-17 GAA)

\$0	\$346,629	\$346,629	\$0	\$0
-----	-----------	-----------	-----	-----

**Comments:** 84th Texas Legislature Regular Session

*BASE ADJUSTMENT*

Revised Receipts

\$22,026	\$32,030	\$33,200	\$0	\$0
----------	----------	----------	-----	-----

**Comments:** Revised Receipts

<b>TOTAL,</b>	<b>GR Dedicated - Estimated Board Authorized Tuition Increases Account No. 704</b>	<b>\$379,368</b>	<b>\$378,659</b>	<b>\$379,829</b>	<b>\$0</b>	<b>\$0</b>
---------------	--	------------------	------------------	------------------	------------	------------

**770** GR Dedicated - Estimated Other Educational and General Income Account No. 770

*REGULAR APPROPRIATIONS*

**2.B. Summary of Base Request by Method of Finance**  
 85th Regular Session, Agency Submission, Version 1  
 Automated Budget and Evaluation System of Texas (ABEST)

10/10/2016 4:47:09PM

Agency code: <b>761</b>		Agency name: <b>Texas A&amp;M International University</b>				
<b>METHOD OF FINANCING</b>	<b>Exp 2015</b>	<b>Est 2016</b>	<b>Bud 2017</b>	<b>Req 2018</b>	<b>Req 2019</b>	
<b><u>GENERAL REVENUE FUND - DEDICATED</u></b>						
Regular Appropriations from MOF (2014-15 GAA)	\$7,901,615	\$0	\$0	\$0	\$0	
<b>Comments:</b> 83rd Texas Legislature Regular Session						
Regular Appropriations from MOF (2016-17 GAA)	\$0	\$7,825,578	\$7,847,623	\$2,355,441	\$2,367,680	
<b>Comments:</b> 84th Texas Legislature Regular Session						
<i>BASE ADJUSTMENT</i>						
Revised Receipts	\$(60,712)	\$786,429	\$872,775	\$0	\$0	
<b>Comments:</b> Revised Receipts						
<b>TOTAL, GR Dedicated - Estimated Other Educational and General Income Account No. 770</b>	<b>\$7,840,903</b>	<b>\$8,612,007</b>	<b>\$8,720,398</b>	<b>\$2,355,441</b>	<b>\$2,367,680</b>	
<b>TOTAL GENERAL REVENUE FUND - DEDICATED - 704, 708 &amp; 770</b>	<b>\$8,220,271</b>	<b>\$8,990,666</b>	<b>\$9,100,227</b>	<b>\$2,355,441</b>	<b>\$2,367,680</b>	
<b>TOTAL, ALL GENERAL REVENUE FUND - DEDICATED</b>	<b>\$8,220,271</b>	<b>\$8,990,666</b>	<b>\$9,100,227</b>	<b>\$2,355,441</b>	<b>\$2,367,680</b>	

**2.B. Summary of Base Request by Method of Finance**  
 85th Regular Session, Agency Submission, Version 1  
 Automated Budget and Evaluation System of Texas (ABEST)

10/10/2016 4:47:09PM

Agency code: <b>761</b>		Agency name: <b>Texas A&amp;M International University</b>				
<b>METHOD OF FINANCING</b>		<b>Exp 2015</b>	<b>Est 2016</b>	<b>Bud 2017</b>	<b>Req 2018</b>	<b>Req 2019</b>
<b>TOTAL,</b>	<b>GR &amp; GR-DEDICATED FUNDS</b>	<b>\$37,170,913</b>	<b>\$40,321,466</b>	<b>\$44,774,264</b>	<b>\$19,447,184</b>	<b>\$19,456,099</b>
<b><u>OTHER FUNDS</u></b>						
<u>777</u>	Interagency Contracts					
	<i>REGULAR APPROPRIATIONS</i>					
	SB1, Legislature Regular Session, Art III, Rider 3 Page 76	\$137,887	\$0	\$0	\$0	\$0
	SB1, Legislature Regular Session, Art III, Rider 3 Page 77	\$0	\$137,887	\$137,887	\$137,887	\$137,887
<b>TOTAL,</b>	<b>Interagency Contracts</b>	<b>\$137,887</b>	<b>\$137,887</b>	<b>\$137,887</b>	<b>\$137,887</b>	<b>\$137,887</b>
<b>TOTAL, ALL</b>	<b>OTHER FUNDS</b>	<b>\$137,887</b>	<b>\$137,887</b>	<b>\$137,887</b>	<b>\$137,887</b>	<b>\$137,887</b>
<b>GRAND TOTAL</b>		<b>\$37,308,800</b>	<b>\$40,459,353</b>	<b>\$44,912,151</b>	<b>\$19,585,071</b>	<b>\$19,593,986</b>

**2.B. Summary of Base Request by Method of Finance**

10/10/2016 4:47:09PM

85th Regular Session, Agency Submission, Version 1

Automated Budget and Evaluation System of Texas (ABEST)

Agency code: <b>761</b>	Agency name: <b>Texas A&amp;M International University</b>				
<b>METHOD OF FINANCING</b>	<b>Exp 2015</b>	<b>Est 2016</b>	<b>Bud 2017</b>	<b>Req 2018</b>	<b>Req 2019</b>
<b>FULL-TIME-EQUIVALENT POSITIONS</b>					
REGULAR APPROPRIATIONS					
Regular Appropriations from MOF Table (2014-2015 GAA)	520.0	0.0	0.0	0.0	0.0
Regular Appropriations from MOF Table (2016-2017 GAA)	0.0	520.0	520.0	515.0	515.0
UNAUTHORIZED NUMBER OVER (BELOW) CAP					
Unauthorized Number Over (Below) Cap	(99.3)	0.0	0.0	0.0	0.0
<b>TOTAL, ADJUSTED FTES</b>	<b>420.7</b>	<b>520.0</b>	<b>520.0</b>	<b>515.0</b>	<b>515.0</b>

**NUMBER OF 100% FEDERALLY FUNDED FTES**

2.C. Summary of Base Request by Object of Expense

10/10/2016 4:47:09PM

85th Regular Session, Agency Submission, Version 1  
Automated Budget and Evaluation System of Texas (ABEST)

761 Texas A&M International University

OBJECT OF EXPENSE	Exp 2015	Est 2016	Bud 2017	BL 2018	BL 2019
1001 SALARIES AND WAGES	\$9,747,339	\$11,864,159	\$11,867,951	\$951,420	\$951,420
1002 OTHER PERSONNEL COSTS	\$267,740	\$304,199	\$304,199	\$199	\$199
1005 FACULTY SALARIES	\$15,761,226	\$17,752,323	\$17,738,382	\$7,636,422	\$7,636,422
1010 PROFESSIONAL SALARIES	\$10,737	\$12,000	\$12,000	\$0	\$0
2001 PROFESSIONAL FEES AND SERVICES	\$10,793	\$10,000	\$10,000	\$10,000	\$10,000
2003 CONSUMABLE SUPPLIES	\$108,593	\$105,000	\$105,000	\$0	\$0
2004 UTILITIES	\$1,198,229	\$1,300,000	\$1,300,000	\$0	\$0
2008 DEBT SERVICE	\$7,795,114	\$6,636,348	\$10,919,798	\$8,660,091	\$8,656,767
2009 OTHER OPERATING EXPENSE	\$2,350,449	\$2,446,393	\$2,624,821	\$2,311,939	\$2,324,178
5000 CAPITAL EXPENDITURES	\$58,580	\$28,931	\$30,000	\$15,000	\$15,000
<b>OOE Total (Excluding Riders)</b>	<b>\$37,308,800</b>	<b>\$40,459,353</b>	<b>\$44,912,151</b>	<b>\$19,585,071</b>	<b>\$19,593,986</b>
<b>OOE Total (Riders)</b>					
<b>Grand Total</b>	<b>\$37,308,800</b>	<b>\$40,459,353</b>	<b>\$44,912,151</b>	<b>\$19,585,071</b>	<b>\$19,593,986</b>

**2.D. Summary of Base Request Objective Outcomes**  
 85th Regular Session, Agency Submission, Version 1  
 Automated Budget and Evaluation system of Texas (ABEST)

10/10/2016 4:47:10PM

**761 Texas A&M International University**

Goal/ Objective / Outcome	Exp 2015	Est 2016	Bud 2017	BL 2018	BL 2019
1 Provide Instructional and Operations Support					
1 Provide Instructional and Operations Support					
<b>KEY</b> 1 % 1st-time, Full-time, Degree-seeking Frsh Earn Degree in 6 Yrs	40.88%	42.00%	43.00%	43.00%	44.00%
2 % 1st-time, Full-time, Degree-seeking White Frsh Earn Degree in 6 Yrs	22.20%	25.00%	15.00%	15.00%	20.00%
3 % 1st-time, Full-time, Degree-seeking Hisp Frsh Earn Degree in 6 Yrs	40.44%	42.00%	43.00%	43.00%	44.00%
4 % 1st-time, Full-time, Degree-seeking Black Frsh Earn Degree in 6 Yrs	66.67%	25.00%	0.00%	0.00%	100.00%
5 % 1st-time, Full-time, Degree-seeking Other Frshmn Earn Deg in 6 Yrs	60.00%	65.00%	70.00%	70.00%	75.00%
<b>KEY</b> 6 % 1st-time, Full-time, Degree-seeking Frsh Earn Degree in 4 Yrs	21.70%	22.00%	22.00%	23.00%	23.00%
7 % 1st-time, Full-time, Degree-seeking White Frsh Earn Degree in 4 Yrs	45.50%	42.00%	32.00%	20.00%	35.00%
8 % 1st-time, Full-time, Degree-seeking Hisp Frsh Earn Degree in 4 Yrs	21.30%	21.50%	22.00%	22.00%	23.00%
9 % 1st-time, Full-time, Degree-seeking Black Frsh Earn Degree in 4 Yrs	0.00%	25.00%	0.00%	0.00%	0.00%
10 % 1st-time, Full-time, Degree-seeking Other Frsh Earn Degree in 4 Yrs	0.00%	25.00%	35.00%	40.00%	45.00%
<b>KEY</b> 11 Persistence Rate - 1st-time, Full-time, Degree-seeking Frsh after 1 Yr	75.74%	76.00%	76.00%	77.00%	77.00%
12 Persistence 1st-time, Full-time, Degree-seeking White Frsh after 1 Yr	70.60%	72.00%	72.00%	73.00%	73.00%



**2.D. Summary of Base Request Objective Outcomes**  
 85th Regular Session, Agency Submission, Version 1  
 Automated Budget and Evaluation system of Texas (ABEST)

10/10/2016 4:47:10PM

**761 Texas A&M International University**

<i>Goal/ Objective / Outcome</i>	<b>Exp 2015</b>	<b>Est 2016</b>	<b>Bud 2017</b>	<b>BL 2018</b>	<b>BL 2019</b>
<b>13 Persistence 1st-time, Full-time, Degree-seeking Hisp Frsh after 1 Yr</b>	74.94%	75.00%	76.00%	77.00%	77.00%
<b>14 Persistence 1st-time, Full-time, Degree-seeking Black Frsh after 1 Yr</b>	0.00%	33.00%	35.00%	35.00%	40.00%
<b>15 Persistence 1st-time, Full-time, Degree-seeking Other Frsh after 1 Yr</b>	77.10%	78.00%	78.00%	80.00%	80.00%
<b>16 Percent of Semester Credit Hours Completed</b>	95.11%	95.00%	95.00%	95.00%	95.00%
<b>KEY 17 Certification Rate of Teacher Education Graduates</b>	90.50%	91.00%	91.00%	92.00%	92.00%
<b>18 Percentage of Underprepared Students Satisfy TSI Obligation in Math</b>	81.50%	71.00%	74.00%	75.00%	75.00%
<b>19 Percentage of Underprepared Students Satisfy TSI Obligation in Writing</b>	71.70%	79.00%	85.00%	90.00%	90.00%
<b>20 Percentage of Underprepared Students Satisfy TSI Obligation in Reading</b>	75.00%	88.00%	94.00%	95.00%	95.00%
<b>KEY 21 % of Baccalaureate Graduates Who Are 1st Generation College Graduates</b>	52.91%	53.00%	53.00%	53.00%	53.00%
<b>KEY 22 % Incoming FT Degree-seeking Undergrad Transfer Students Grad 4 Years</b>	66.67%	68.00%	70.00%	71.00%	71.00%
<b>KEY 23 % Incoming FT Degree-seeking Undergrad Transfer Students Grad 2 Years</b>	23.35%	24.00%	24.00%	25.00%	25.00%
<b>KEY 24 % Lower Division Semester Credit Hours Taught by Tenured/Tenure-Track</b>	25.10%	26.00%	27.00%	28.00%	30.00%
<b>KEY 27 State Licensure Pass Rate of Nursing Graduates</b>	94.00%	95.00%	95.00%	95.00%	95.00%

**2.D. Summary of Base Request Objective Outcomes**  
 85th Regular Session, Agency Submission, Version 1  
 Automated Budget and Evaluation system of Texas (ABEST)

10/10/2016 4:47:10PM

**761 Texas A&M International University**

<i>Goal/ Objective / Outcome</i>	<b>Exp 2015</b>	<b>Est 2016</b>	<b>Bud 2017</b>	<b>BL 2018</b>	<b>BL 2019</b>
<b>KEY 30 Dollar Value of External or Sponsored Research Funds (in Millions)</b>	2.85	2.90	2.95	3.00	3.00
<b>31 External or Sponsored Research Funds As a % of State Appropriations</b>	3.68%	3.50%	3.50%	3.50%	3.50%
<b>32 External Research Funds As Percentage Appropriated for Research</b>	0.00%	0.00%	0.00%	0.00%	0.00%
<b>48 % Endowed Professorships/ Chairs Unfilled All/ Part of Fiscal Year</b>	25.00%	0.00%	0.00%	0.00%	0.00%
<b>49 Average No Months Endowed Chairs Remain Vacant</b>	4.00	0.00	0.00	0.00	0.00

**2.E. Summary of Exceptional Items Request**  
 85th Regular Session, Agency Submission, Version 1  
 Automated Budget and Evaluation System of Texas (ABEST)

DATE: 10/10/2016  
 TIME : 4:47:10PM

Agency code: 761

Agency name: Texas A&M International University

Priority	Item	2018			2019			Biennium	
		GR and GR/GR Dedicated	All Funds	FTEs	GR and GR Dedicated	All Funds	FTEs	GR and GR Dedicated	All Funds
1	4% Reduction	\$351,319	\$351,319	5.0	\$351,319	\$351,319	5.0	\$702,638	\$702,638
2	Engineering Degree Program	\$3,000,000	\$3,000,000	12.0	\$3,000,000	\$3,000,000	12.0	\$6,000,000	\$6,000,000
3	Si Texas	\$1,200,000	\$1,200,000	7.0	\$1,200,000	\$1,200,000	7.0	\$2,400,000	\$2,400,000
<b>Total, Exceptional Items Request</b>		<b>\$4,551,319</b>	<b>\$4,551,319</b>	<b>24.0</b>	<b>\$4,551,319</b>	<b>\$4,551,319</b>	<b>24.0</b>	<b>\$9,102,638</b>	<b>\$9,102,638</b>

**Method of Financing**

General Revenue	\$4,551,319	\$4,551,319		\$4,551,319	\$4,551,319		\$9,102,638	\$9,102,638
General Revenue - Dedicated								
Federal Funds								
Other Funds								
	<b>\$4,551,319</b>	<b>\$4,551,319</b>		<b>\$4,551,319</b>	<b>\$4,551,319</b>		<b>\$9,102,638</b>	<b>\$9,102,638</b>

**Full Time Equivalent Positions**

**24.0**

**24.0**

**Number of 100% Federally Funded FTEs**

**2.F. Summary of Total Request by Strategy**  
 85th Regular Session, Agency Submission, Version 1  
 Automated Budget and Evaluation System of Texas (ABEST)

DATE : 10/10/2016

TIME : 4:47:10PM

Agency code: 761 Agency name: Texas A&M International University

<b>Goal/Objective/STRATEGY</b>	<b>Base 2018</b>	<b>Base 2019</b>	<b>Exceptional 2018</b>	<b>Exceptional 2019</b>	<b>Total Request 2018</b>	<b>Total Request 2019</b>
<b>1 Provide Instructional and Operations Support</b>						
<i>1 Provide Instructional and Operations Support</i>						
<b>1 OPERATIONS SUPPORT</b>	\$0	\$0	\$0	\$0	\$0	\$0
<b>3 STAFF GROUP INSURANCE PREMIUMS</b>	1,056,658	1,056,658	0	0	1,056,658	1,056,658
<b>4 WORKERS' COMPENSATION INSURANCE</b>	26,391	26,391	0	0	26,391	26,391
<b>5 UNEMPLOYMENT COMPENSATION INSURANCE</b>	199	199	0	0	199	199
<b>6 TEXAS PUBLIC EDUCATION GRANTS</b>	1,223,890	1,236,129	0	0	1,223,890	1,236,129
<b>TOTAL, GOAL 1</b>	<b>\$2,307,138</b>	<b>\$2,319,377</b>	<b>\$0</b>	<b>\$0</b>	<b>\$2,307,138</b>	<b>\$2,319,377</b>
<b>2 Provide Infrastructure Support</b>						
<i>1 Provide Operation and Maintenance of E&amp;G Space</i>						
<b>1 E&amp;G SPACE SUPPORT</b>	0	0	0	0	0	0
<b>2 TUITION REVENUE BOND RETIREMENT</b>	8,660,091	8,656,767	0	0	8,660,091	8,656,767
<b>5 SMALL INSTITUTION SUPPLEMENT</b>	0	0	0	0	0	0
<b>TOTAL, GOAL 2</b>	<b>\$8,660,091</b>	<b>\$8,656,767</b>	<b>\$0</b>	<b>\$0</b>	<b>\$8,660,091</b>	<b>\$8,656,767</b>

**2.F. Summary of Total Request by Strategy**  
 85th Regular Session, Agency Submission, Version 1  
 Automated Budget and Evaluation System of Texas (ABEST)

DATE : 10/10/2016  
 TIME : 4:47:10PM

Agency code: 761 Agency name: Texas A&M International University

<b>Goal/Objective/STRATEGY</b>	<b>Base 2018</b>	<b>Base 2019</b>	<b>Exceptional 2018</b>	<b>Exceptional 2019</b>	<b>Total Request 2018</b>	<b>Total Request 2019</b>
<b>3</b> Provide Special Item Support						
<b>1</b> <i>Instructional Support Special Item Support</i>						
<b>3</b> ACADEMIC AND STUDENT SUPPORT	\$1,489,696	\$1,489,696	\$351,319	\$351,319	\$1,841,015	\$1,841,015
<b>3</b> <i>Public Service Special Item Support</i>						
<b>1</b> INSTITUTE FOR INTERNATIONAL TRADE	269,920	269,920	0	0	269,920	269,920
<b>2</b> SMALL BUSINESS DEVELOPMENT CENTER	181,500	181,500	0	0	181,500	181,500
<b>4</b> <i>Institutional Support Special Item Support</i>						
<b>1</b> INSTITUTIONAL ENHANCEMENT	5,926,726	5,926,726	0	0	5,926,726	5,926,726
<b>3</b> OUTREACH AND ENROLLMENT	750,000	750,000	0	0	750,000	750,000
<b>5</b> <i>Exceptional Item Request</i>						
<b>1</b> EXCEPTIONAL ITEM REQUEST	0	0	4,200,000	4,200,000	4,200,000	4,200,000
<b>TOTAL, GOAL 3</b>	<b>\$8,617,842</b>	<b>\$8,617,842</b>	<b>\$4,551,319</b>	<b>\$4,551,319</b>	<b>\$13,169,161</b>	<b>\$13,169,161</b>

**2.F. Summary of Total Request by Strategy**  
 85th Regular Session, Agency Submission, Version 1  
 Automated Budget and Evaluation System of Texas (ABEST)

DATE : 10/10/2016

TIME : 4:47:10PM

Agency code: 761 Agency name: Texas A&M International University

<b>Goal/Objective/STRATEGY</b>	<b>Base 2018</b>	<b>Base 2019</b>	<b>Exceptional 2018</b>	<b>Exceptional 2019</b>	<b>Total Request 2018</b>	<b>Total Request 2019</b>
<b>6</b> Research Funds						
<b>1</b> <i>Research Funds</i>						
<b>1</b> RESEARCH DEVELOPMENT FUND	\$0	\$0	\$0	\$0	\$0	\$0
<b>3</b> <i>Comprehensive Research Fund</i>						
<b>1</b> COMPREHENSIVE RESEARCH FUND	0	0	0	0	0	0
<b>TOTAL, GOAL 6</b>	<b>\$0</b>	<b>\$0</b>	<b>\$0</b>	<b>\$0</b>	<b>\$0</b>	<b>\$0</b>
<b>TOTAL, AGENCY STRATEGY REQUEST</b>	<b>\$19,585,071</b>	<b>\$19,593,986</b>	<b>\$4,551,319</b>	<b>\$4,551,319</b>	<b>\$24,136,390</b>	<b>\$24,145,305</b>
<b>TOTAL, AGENCY RIDER APPROPRIATIONS REQUEST</b>						
<b>GRAND TOTAL, AGENCY REQUEST</b>	<b>\$19,585,071</b>	<b>\$19,593,986</b>	<b>\$4,551,319</b>	<b>\$4,551,319</b>	<b>\$24,136,390</b>	<b>\$24,145,305</b>

**2.F. Summary of Total Request by Strategy**  
 85th Regular Session, Agency Submission, Version 1  
 Automated Budget and Evaluation System of Texas (ABEST)

DATE : 10/10/2016

TIME : 4:47:10PM

Agency code: 761 Agency name: Texas A&M International University

<b>Goal/Objective/STRATEGY</b>	<b>Base 2018</b>	<b>Base 2019</b>	<b>Exceptional 2018</b>	<b>Exceptional 2019</b>	<b>Total Request 2018</b>	<b>Total Request 2019</b>
<b>General Revenue Funds:</b>						
1 General Revenue Fund	\$17,091,743	\$17,088,419	\$4,551,319	\$4,551,319	\$21,643,062	\$21,639,738
	<b>\$17,091,743</b>	<b>\$17,088,419</b>	<b>\$4,551,319</b>	<b>\$4,551,319</b>	<b>\$21,643,062</b>	<b>\$21,639,738</b>
<b>General Revenue Dedicated Funds:</b>						
704 Bd Authorized Tuition Inc	0	0	0	0	0	0
770 Est Oth Educ & Gen Inco	2,355,441	2,367,680	0	0	2,355,441	2,367,680
	<b>\$2,355,441</b>	<b>\$2,367,680</b>	<b>\$0</b>	<b>\$0</b>	<b>\$2,355,441</b>	<b>\$2,367,680</b>
<b>Other Funds:</b>						
777 Interagency Contracts	137,887	137,887	0	0	137,887	137,887
	<b>\$137,887</b>	<b>\$137,887</b>	<b>\$0</b>	<b>\$0</b>	<b>\$137,887</b>	<b>\$137,887</b>
<b>TOTAL, METHOD OF FINANCING</b>	<b>\$19,585,071</b>	<b>\$19,593,986</b>	<b>\$4,551,319</b>	<b>\$4,551,319</b>	<b>\$24,136,390</b>	<b>\$24,145,305</b>
<b>FULL TIME EQUIVALENT POSITIONS</b>	<b>515.0</b>	<b>515.0</b>	<b>24.0</b>	<b>24.0</b>	<b>539.0</b>	<b>539.0</b>

**2.G. Summary of Total Request Objective Outcomes**  
 85th Regular Session, Agency Submission, Version 1  
 Automated Budget and Evaluation system of Texas (ABEST)

Date : 10/10/2016

Time: 4:47:11PM

Agency code: **761** Agency name: **Texas A&M International University**

Goal/ Objective / Outcome

	<b>BL 2018</b>	<b>BL 2019</b>	<b>Excp 2018</b>	<b>Excp 2019</b>	<b>Total Request 2018</b>	<b>Total Request 2019</b>
1 Provide Instructional and Operations Support						
1 <i>Provide Instructional and Operations Support</i>						
<b>KEY 1 % 1st-time, Full-time, Degree-seeking Frsh Earn Degree in 6 Yrs</b>						
	43.00%	44.00%			43.00%	44.00%
<b>2 % 1st-time, Full-time, Degree-seeking White Frsh Earn Degree in 6 Yrs</b>						
	15.00%	20.00%			15.00%	20.00%
<b>3 % 1st-time, Full-time, Degree-seeking Hisp Frsh Earn Degree in 6 Yrs</b>						
	43.00%	44.00%			43.00%	44.00%
<b>4 % 1st-time, Full-time, Degree-seeking Black Frsh Earn Degree in 6 Yrs</b>						
	0.00%	100.00%			0.00%	100.00%
<b>5 % 1st-time, Full-time, Degree-seeking Other Frshmn Earn Deg in 6 Yrs</b>						
	70.00%	75.00%			70.00%	75.00%
<b>KEY 6 % 1st-time, Full-time, Degree-seeking Frsh Earn Degree in 4 Yrs</b>						
	23.00%	23.00%			23.00%	23.00%
<b>7 % 1st-time, Full-time, Degree-seeking White Frsh Earn Degree in 4 Yrs</b>						
	20.00%	35.00%			20.00%	35.00%
<b>8 % 1st-time, Full-time, Degree-seeking Hisp Frsh Earn Degree in 4 Yrs</b>						
	22.00%	23.00%			22.00%	23.00%



**2.G. Summary of Total Request Objective Outcomes**  
 85th Regular Session, Agency Submission, Version 1  
 Automated Budget and Evaluation system of Texas (ABEST)

Date : 10/10/2016

Time: 4:47:11PM

Agency code: 761

Agency name: Texas A&M International University

Goal/ Objective / Outcome

	BL 2018	BL 2019	Excp 2018	Excp 2019	Total Request 2018	Total Request 2019
<b>9 % 1st-time, Full-time, Degree-seeking Black Frsh Earn Degree in 4 Yrs</b>	0.00%	0.00%			0.00%	0.00%
<b>10 % 1st-time, Full-time, Degree-seeking Other Frsh Earn Degree in 4 Yrs</b>	40.00%	45.00%			40.00%	45.00%
<b>KEY 11 Persistence Rate - 1st-time, Full-time, Degree-seeking Frsh after 1 Yr</b>	77.00%	77.00%			77.00%	77.00%
<b>12 Persistence 1st-time, Full-time, Degree-seeking White Frsh after 1 Yr</b>	73.00%	73.00%			73.00%	73.00%
<b>13 Persistence 1st-time, Full-time, Degree-seeking Hisp Frsh after 1 Yr</b>	77.00%	77.00%			77.00%	77.00%
<b>14 Persistence 1st-time, Full-time, Degree-seeking Black Frsh after 1 Yr</b>	35.00%	40.00%			35.00%	40.00%
<b>15 Persistence 1st-time, Full-time, Degree-seeking Other Frsh after 1 Yr</b>	80.00%	80.00%			80.00%	80.00%
<b>16 Percent of Semester Credit Hours Completed</b>	95.00%	95.00%			95.00%	95.00%
<b>KEY 17 Certification Rate of Teacher Education Graduates</b>	92.00%	92.00%			92.00%	92.00%

**2.G. Summary of Total Request Objective Outcomes**  
 85th Regular Session, Agency Submission, Version 1  
 Automated Budget and Evaluation system of Texas (ABEST)

Date : 10/10/2016

Time: 4:47:11PM

Agency code: 761

Agency name: Texas A&M International University

Goal/ Objective / Outcome

	BL 2018	BL 2019	Excp 2018	Excp 2019	Total Request 2018	Total Request 2019
<b>18 Percentage of Underprepared Students Satisfy TSI Obligation in Math</b>	75.00%	75.00%			75.00%	75.00%
<b>19 Percentage of Underprepared Students Satisfy TSI Obligation in Writing</b>	90.00%	90.00%			90.00%	90.00%
<b>20 Percentage of Underprepared Students Satisfy TSI Obligation in Reading</b>	95.00%	95.00%			95.00%	95.00%
<b>KEY 21 % of Baccalaureate Graduates Who Are 1st Generation College Graduates</b>	53.00%	53.00%			53.00%	53.00%
<b>KEY 22 % Incoming FT Degree-seeking Undergrad Transfer Students Grad 4 Years</b>	71.00%	71.00%			71.00%	71.00%
<b>KEY 23 % Incoming FT Degree-seeking Undergrad Transfer Students Grad 2 Years</b>	25.00%	25.00%			25.00%	25.00%
<b>KEY 24 % Lower Division Semester Credit Hours Taught by Tenured/Tenure-Track</b>	28.00%	30.00%			28.00%	30.00%
<b>KEY 27 State Licensure Pass Rate of Nursing Graduates</b>	95.00%	95.00%			95.00%	95.00%
<b>KEY 30 Dollar Value of External or Sponsored Research Funds (in Millions)</b>	3.00	3.00			3.00	3.00

**2.G. Summary of Total Request Objective Outcomes**  
 85th Regular Session, Agency Submission, Version 1  
 Automated Budget and Evaluation system of Texas (ABEST)

Date : 10/10/2016

Time: 4:47:11PM

Agency code: 761

Agency name: Texas A&M International University

Goal/ Objective / Outcome

	<b>BL 2018</b>	<b>BL 2019</b>	<b>Excp 2018</b>	<b>Excp 2019</b>	<b>Total Request 2018</b>	<b>Total Request 2019</b>
<b>31 External or Sponsored Research Funds As a % of State Appropriations</b>	3.50%	3.50%			3.50%	3.50%
<b>32 External Research Funds As Percentage Appropriated for Research</b>	0.00%	0.00%			0.00%	0.00%
<b>48 % Endowed Professorships/ Chairs Unfilled All/ Part of Fiscal Year</b>	0.00%	0.00%			0.00%	0.00%
<b>49 Average No Months Endowed Chairs Remain Vacant</b>	0.00	0.00			0.00	0.00

**761 Texas A&M International University**

GOAL: 1 Provide Instructional and Operations Support  
 OBJECTIVE: 1 Provide Instructional and Operations Support  
 STRATEGY: 1 Operations Support

Service Categories:

Service: 19      Income: A.2      Age: B.3

CODE	DESCRIPTION	Exp 2015	Est 2016	Bud 2017	BL 2018 <sup>(1)</sup>	BL 2019 <sup>(1)</sup>
<b>Output Measures:</b>						
	1 Number of Undergraduate Degrees Awarded	990.00	1,075.00	1,130.00	1,185.00	1,185.00
	2 Number of Minority Graduates	1,143.00	1,225.00	1,285.00	1,350.00	1,350.00
	3 Number of Underprepared Students Who Satisfy TSI Obligation in Math	44.00	90.00	140.00	145.00	145.00
	4 Number of Underprepared Students Who Satisfy TSI Obligation in Writing	33.00	38.00	70.00	70.00	70.00
	5 Number of Underprepared Students Who Satisfy TSI Obligation in Reading	30.00	53.00	115.00	115.00	115.00
	6 Number of Two-Year College Transfers Who Graduate	371.00	375.00	380.00	390.00	390.00
<b>Efficiency Measures:</b>						
KEY 1	Administrative Cost As a Percent of Operating Budget	8.38 %	7.28 %	7.00 %	6.90 %	6.90 %
KEY 2	Avg Cost of Resident Undergraduate Tuition and Fees for 15 SCH	3,836.00	3,880.15	3,965.51	4,036.89	4,036.89
<b>Explanatory/Input Measures:</b>						
	1 Student/Faculty Ratio	1.24	1.24	1.23	1.23	1.23
	2 Number of Minority Students Enrolled	6,726.00	6,895.00	7,070.00	7,245.00	7,245.00
	3 Number of Community College Transfers Enrolled	1,655.00	1,680.00	1,705.00	1,730.00	1,760.00
	4 Number of Semester Credit Hours Completed	75,113.00	76,600.00	78,130.00	79,690.00	81,280.00

(1) - Formula funded strategies are not requested in 2018-19 because amounts are not determined by institutions.

**3.A. Strategy Request**  
 85th Regular Session, Agency Submission, Version 1  
 Automated Budget and Evaluation System of Texas (ABEST)

10/12/2016 11:00:20AM

**761 Texas A&M International University**

GOAL: 1 Provide Instructional and Operations Support  
 OBJECTIVE: 1 Provide Instructional and Operations Support  
 STRATEGY: 1 Operations Support

Service Categories:

Service: 19      Income: A.2      Age: B.3

CODE	DESCRIPTION	Exp 2015	Est 2016	Bud 2017	BL 2018 <sup>(1)</sup>	BL 2019 <sup>(1)</sup>
	5 Number of Semester Credit Hours	79,049.00	80,630.00	82,240.00	83,885.00	85,560.00
	6 Number of Students Enrolled as of the Twelfth Class Day	7,192.00	7,370.00	7,555.00	7,930.00	8,130.00
KEY	7 Average Student Loan Debt	17,848.00	18,026.00	18,206.00	18,206.00	18,206.00
KEY	8 Percent of Students with Student Loan Debt	65.00 %	66.00 %	66.00 %	66.00 %	66.00 %
KEY	9 Average Financial Aid Award Per Full-Time Student	9,113.00	9,150.00	9,190.00	9,190.00	9,190.00
KEY	10 Percent of Full-Time Students Receiving Financial Aid	92.00 %	92.00 %	93.00 %	93.00 %	93.00 %
<b>Objects of Expense:</b>						
1001	SALARIES AND WAGES	\$6,789,805	\$8,554,317	\$8,558,109	\$0	\$0
1002	OTHER PERSONNEL COSTS	\$244,349	\$291,000	\$291,000	\$0	\$0
1005	FACULTY SALARIES	\$7,257,106	\$9,397,682	\$9,383,741	\$0	\$0
1010	PROFESSIONAL SALARIES	\$10,737	\$12,000	\$12,000	\$0	\$0
2003	CONSUMABLE SUPPLIES	\$104,890	\$105,000	\$105,000	\$0	\$0
2009	OTHER OPERATING EXPENSE	\$323,964	\$325,000	\$325,000	\$0	\$0
5000	CAPITAL EXPENDITURES	\$12,000	\$13,931	\$15,000	\$0	\$0
<b>TOTAL, OBJECT OF EXPENSE</b>		<b>\$14,742,851</b>	<b>\$18,698,930</b>	<b>\$18,689,850</b>	<b>\$0</b>	<b>\$0</b>
<b>Method of Financing:</b>						
1	General Revenue Fund	\$9,381,727	\$12,806,494	\$12,856,385	\$0	\$0

(1) - Formula funded strategies are not requested in 2018-19 because amounts are not determined by institutions.

**761 Texas A&M International University**

GOAL: 1 Provide Instructional and Operations Support  
 OBJECTIVE: 1 Provide Instructional and Operations Support  
 STRATEGY: 1 Operations Support

Service Categories:

Service: 19      Income: A.2      Age: B.3

CODE	DESCRIPTION	Exp 2015	Est 2016	Bud 2017	BL 2018 <sup>(1)</sup>	BL 2019 <sup>(1)</sup>
<b>SUBTOTAL, MOF (GENERAL REVENUE FUNDS)</b>		<b>\$9,381,727</b>	<b>\$12,806,494</b>	<b>\$12,856,385</b>	<b>\$0</b>	<b>\$0</b>
<b>Method of Financing:</b>						
704	Bd Authorized Tuition Inc	\$379,368	\$378,659	\$379,829	\$0	\$0
770	Est Oth Educ & Gen Inco	\$4,981,756	\$5,513,777	\$5,453,636	\$0	\$0
<b>SUBTOTAL, MOF (GENERAL REVENUE FUNDS - DEDICATED)</b>		<b>\$5,361,124</b>	<b>\$5,892,436</b>	<b>\$5,833,465</b>	<b>\$0</b>	<b>\$0</b>
<b>TOTAL, METHOD OF FINANCE (INCLUDING RIDERS)</b>					<b>\$0</b>	<b>\$0</b>
<b>TOTAL, METHOD OF FINANCE (EXCLUDING RIDERS)</b>		<b>\$14,742,851</b>	<b>\$18,698,930</b>	<b>\$18,689,850</b>	<b>\$0</b>	<b>\$0</b>
<b>FULL TIME EQUIVALENT POSITIONS:</b>		<b>217.7</b>	<b>321.9</b>	<b>322.1</b>	<b>326.0</b>	<b>326.0</b>

**STRATEGY DESCRIPTION AND JUSTIFICATION:**

The Instruction and Operations Formula provides funding for faculty salaries, departmental operating expense, library, instructional administration, research enhancement, student services and institutional support.

The funds are distributed on a weighted semester credit hour basis. The rate per weighted semester credit hour is established by the Legislature each biennium.

(1) - Formula funded strategies are not requested in 2018-19 because amounts are not determined by institutions.

**761 Texas A&M International University**

GOAL: 1 Provide Instructional and Operations Support  
 OBJECTIVE: 1 Provide Instructional and Operations Support  
 STRATEGY: 1 Operations Support

Service Categories:

Service: 19      Income: A.2      Age: B.3

(1)

(1)

CODE	DESCRIPTION	Exp 2015	Est 2016	Bud 2017	BL 2018	BL 2019
------	-------------	----------	----------	----------	---------	---------

**EXTERNAL/INTERNAL FACTORS IMPACTING STRATEGY:**

**EXPLANATION OF BIENNIAL CHANGE (includes Rider amounts):**

<u>STRATEGY BIENNIAL TOTAL - ALL FUNDS</u>		<u>BIENNIAL</u>	<u>EXPLANATION OF BIENNIAL CHANGE</u>	
Base Spending (Est 2016 + Bud 2017)	Baseline Request (BL 2018 + BL 2019)	CHANGE	\$ Amount	Explanation(s) of Amount (must specify MOFs and FTEs)
\$37,388,780	\$0	\$(37,388,780)	\$(37,388,780)	Formula Funded Strategies are not requested in 2018-19 because amounts are not determined by institutions.
			<b>\$(37,388,780)</b>	<b>Total of Explanation of Biennial Change</b>

(1) - Formula funded strategies are not requested in 2018-19 because amounts are not determined by institutions.

**761 Texas A&M International University**

GOAL: 1 Provide Instructional and Operations Support  
 OBJECTIVE: 1 Provide Instructional and Operations Support  
 STRATEGY: 3 Staff Group Insurance Premiums

Service Categories:  
 Service: 06      Income: A.2      Age: B.3

CODE	DESCRIPTION	Exp 2015	Est 2016	Bud 2017	BL 2018	BL 2019
<b>Objects of Expense:</b>						
2009	OTHER OPERATING EXPENSE	\$797,573	\$870,770	\$1,056,658	\$1,056,658	\$1,056,658
<b>TOTAL, OBJECT OF EXPENSE</b>		<b>\$797,573</b>	<b>\$870,770</b>	<b>\$1,056,658</b>	<b>\$1,056,658</b>	<b>\$1,056,658</b>
<b>Method of Financing:</b>						
770	Est Oth Educ & Gen Inco	\$797,573	\$870,770	\$1,056,658	\$1,056,658	\$1,056,658
<b>SUBTOTAL, MOF (GENERAL REVENUE FUNDS - DEDICATED)</b>		<b>\$797,573</b>	<b>\$870,770</b>	<b>\$1,056,658</b>	<b>\$1,056,658</b>	<b>\$1,056,658</b>
<b>TOTAL, METHOD OF FINANCE (INCLUDING RIDERS)</b>					<b>\$1,056,658</b>	<b>\$1,056,658</b>
<b>TOTAL, METHOD OF FINANCE (EXCLUDING RIDERS)</b>		<b>\$797,573</b>	<b>\$870,770</b>	<b>\$1,056,658</b>	<b>\$1,056,658</b>	<b>\$1,056,658</b>

**FULL TIME EQUIVALENT POSITIONS:**

**STRATEGY DESCRIPTION AND JUSTIFICATION:**

This strategy is to provide proportional share of staff group insurance premiums paid from Other Educational and General funds.

**EXTERNAL/INTERNAL FACTORS IMPACTING STRATEGY:**



**761 Texas A&M International University**

GOAL: 1 Provide Instructional and Operations Support  
 OBJECTIVE: 1 Provide Instructional and Operations Support  
 STRATEGY: 3 Staff Group Insurance Premiums

Service Categories:

Service: 06      Income: A.2      Age: B.3

CODE	DESCRIPTION	Exp 2015	Est 2016	Bud 2017	BL 2018	BL 2019
------	-------------	----------	----------	----------	---------	---------

**EXPLANATION OF BIENNIAL CHANGE (includes Rider amounts):**

<u>STRATEGY BIENNIAL TOTAL - ALL FUNDS</u>		<u>BIENNIAL CHANGE</u>	<u>EXPLANATION OF BIENNIAL CHANGE</u>	
<u>Base Spending (Est 2016 + Bud 2017)</u>	<u>Baseline Request (BL 2018 + BL 2019)</u>		<u>\$ Amount</u>	<u>Explanation(s) of Amount (must specify MOFs and FTEs)</u>
\$1,927,428	\$2,113,316	\$185,888	\$185,888	Growth in Group Insurance enrollment
			<b>\$185,888</b>	<b>Total of Explanation of Biennial Change</b>

**761 Texas A&M International University**

GOAL: 1 Provide Instructional and Operations Support  
 OBJECTIVE: 1 Provide Instructional and Operations Support  
 STRATEGY: 4 Workers' Compensation Insurance

Service Categories:

Service: 06      Income: A.2      Age: B.3

CODE	DESCRIPTION	Exp 2015	Est 2016	Bud 2017	BL 2018	BL 2019
<b>Objects of Expense:</b>						
2009	OTHER OPERATING EXPENSE	\$49,051	\$26,391	\$26,391	\$26,391	\$26,391
<b>TOTAL, OBJECT OF EXPENSE</b>		<b>\$49,051</b>	<b>\$26,391</b>	<b>\$26,391</b>	<b>\$26,391</b>	<b>\$26,391</b>
<b>Method of Financing:</b>						
1	General Revenue Fund	\$40,022	\$26,391	\$26,391	\$26,391	\$26,391
<b>SUBTOTAL, MOF (GENERAL REVENUE FUNDS)</b>		<b>\$40,022</b>	<b>\$26,391</b>	<b>\$26,391</b>	<b>\$26,391</b>	<b>\$26,391</b>
<b>Method of Financing:</b>						
770	Est Oth Educ & Gen Inco	\$9,029	\$0	\$0	\$0	\$0
<b>SUBTOTAL, MOF (GENERAL REVENUE FUNDS - DEDICATED)</b>		<b>\$9,029</b>	<b>\$0</b>	<b>\$0</b>	<b>\$0</b>	<b>\$0</b>
<b>TOTAL, METHOD OF FINANCE (INCLUDING RIDERS)</b>					<b>\$26,391</b>	<b>\$26,391</b>
<b>TOTAL, METHOD OF FINANCE (EXCLUDING RIDERS)</b>		<b>\$49,051</b>	<b>\$26,391</b>	<b>\$26,391</b>	<b>\$26,391</b>	<b>\$26,391</b>
<b>FULL TIME EQUIVALENT POSITIONS:</b>						

**761 Texas A&M International University**

GOAL: 1 Provide Instructional and Operations Support  
 OBJECTIVE: 1 Provide Instructional and Operations Support Service Categories:  
 STRATEGY: 4 Workers' Compensation Insurance Service: 06 Income: A.2 Age: B.3

CODE	DESCRIPTION	Exp 2015	Est 2016	Bud 2017	BL 2018	BL 2019
------	-------------	----------	----------	----------	---------	---------

**STRATEGY DESCRIPTION AND JUSTIFICATION:**

The strategy funds the Worker's Compensation payments related to Educational and General funds.

**EXTERNAL/INTERNAL FACTORS IMPACTING STRATEGY:**

**EXPLANATION OF BIENNIAL CHANGE (includes Rider amounts):**

<u>STRATEGY BIENNIAL TOTAL - ALL FUNDS</u>		<u>BIENNIAL CHANGE</u>	<u>EXPLANATION OF BIENNIAL CHANGE</u>	
<u>Base Spending (Est 2016 + Bud 2017)</u>	<u>Baseline Request (BL 2018 + BL 2019)</u>		<u>\$ Amount</u>	<u>Explanation(s) of Amount (must specify MOFs and FTEs)</u>
\$52,782	\$52,782	\$0	\$0	No variance.
			<b>\$0</b>	<b>Total of Explanation of Biennial Change</b>

**761 Texas A&M International University**

GOAL: 1 Provide Instructional and Operations Support  
 OBJECTIVE: 1 Provide Instructional and Operations Support  
 STRATEGY: 5 Unemployment Compensation Insurance

Service Categories:  
 Service: 06      Income: A.2      Age: B.3

CODE	DESCRIPTION	Exp 2015	Est 2016	Bud 2017	BL 2018	BL 2019
<b>Objects of Expense:</b>						
1002	OTHER PERSONNEL COSTS	\$5,807	\$199	\$199	\$199	\$199
<b>TOTAL, OBJECT OF EXPENSE</b>		<b>\$5,807</b>	<b>\$199</b>	<b>\$199</b>	<b>\$199</b>	<b>\$199</b>
<b>Method of Financing:</b>						
1	General Revenue Fund	\$199	\$199	\$199	\$199	\$199
<b>SUBTOTAL, MOF (GENERAL REVENUE FUNDS)</b>		<b>\$199</b>	<b>\$199</b>	<b>\$199</b>	<b>\$199</b>	<b>\$199</b>
<b>Method of Financing:</b>						
770	Est Oth Educ & Gen Inco	\$5,608	\$0	\$0	\$0	\$0
<b>SUBTOTAL, MOF (GENERAL REVENUE FUNDS - DEDICATED)</b>		<b>\$5,608</b>	<b>\$0</b>	<b>\$0</b>	<b>\$0</b>	<b>\$0</b>
<b>TOTAL, METHOD OF FINANCE (INCLUDING RIDERS)</b>					<b>\$199</b>	<b>\$199</b>
<b>TOTAL, METHOD OF FINANCE (EXCLUDING RIDERS)</b>		<b>\$5,807</b>	<b>\$199</b>	<b>\$199</b>	<b>\$199</b>	<b>\$199</b>
<b>FULL TIME EQUIVALENT POSITIONS:</b>						

**761 Texas A&M International University**

GOAL: 1 Provide Instructional and Operations Support  
 OBJECTIVE: 1 Provide Instructional and Operations Support  
 STRATEGY: 5 Unemployment Compensation Insurance

Service Categories:

Service: 06      Income: A.2      Age: B.3

CODE	DESCRIPTION	Exp 2015	Est 2016	Bud 2017	BL 2018	BL 2019
------	-------------	----------	----------	----------	---------	---------

**STRATEGY DESCRIPTION AND JUSTIFICATION:**

To provide funds for the statutorily mandated unemployment compensation insurance program (Article 8309b, V.A.C.S.). This program provides income continuation for regular employees impacted by reductions in force. The program is part of a total compensation and benefit package that is designed to assist in attracting and retaining quality employees.

**EXTERNAL/INTERNAL FACTORS IMPACTING STRATEGY:**

**EXPLANATION OF BIENNIAL CHANGE (includes Rider amounts):**

<u>STRATEGY BIENNIAL TOTAL - ALL FUNDS</u>		BIENNIAL CHANGE	<u>EXPLANATION OF BIENNIAL CHANGE</u>	
Base Spending (Est 2016 + Bud 2017)	Baseline Request (BL 2018 + BL 2019)		\$ Amount	Explanation(s) of Amount (must specify MOFs and FTEs)
\$398	\$398	\$0	\$0	No Variance.
		<b>\$0</b>		<b>Total of Explanation of Biennial Change</b>

**761 Texas A&M International University**

GOAL: 1 Provide Instructional and Operations Support  
 OBJECTIVE: 1 Provide Instructional and Operations Support  
 STRATEGY: 6 Texas Public Education Grants

Service Categories:

Service: 20      Income: A.2      Age: B.3

CODE	DESCRIPTION	Exp 2015	Est 2016	Bud 2017	BL 2018	BL 2019
<b>Objects of Expense:</b>						
2009	OTHER OPERATING EXPENSE	\$1,172,705	\$1,219,232	\$1,211,772	\$1,223,890	\$1,236,129
<b>TOTAL, OBJECT OF EXPENSE</b>		<b>\$1,172,705</b>	<b>\$1,219,232</b>	<b>\$1,211,772</b>	<b>\$1,223,890</b>	<b>\$1,236,129</b>
<b>Method of Financing:</b>						
770	Est Oth Educ & Gen Inco	\$1,172,705	\$1,219,232	\$1,211,772	\$1,223,890	\$1,236,129
<b>SUBTOTAL, MOF (GENERAL REVENUE FUNDS - DEDICATED)</b>		<b>\$1,172,705</b>	<b>\$1,219,232</b>	<b>\$1,211,772</b>	<b>\$1,223,890</b>	<b>\$1,236,129</b>
<b>TOTAL, METHOD OF FINANCE (INCLUDING RIDERS)</b>					<b>\$1,223,890</b>	<b>\$1,236,129</b>
<b>TOTAL, METHOD OF FINANCE (EXCLUDING RIDERS)</b>		<b>\$1,172,705</b>	<b>\$1,219,232</b>	<b>\$1,211,772</b>	<b>\$1,223,890</b>	<b>\$1,236,129</b>

**FULL TIME EQUIVALENT POSITIONS:**

**STRATEGY DESCRIPTION AND JUSTIFICATION:**

This strategy represents tuition set aside for the Texas Public Education Grants program as required by Section 56.033 of the Texas Education Code.

**EXTERNAL/INTERNAL FACTORS IMPACTING STRATEGY:**

**3.A. Strategy Request**  
 85th Regular Session, Agency Submission, Version 1  
 Automated Budget and Evaluation System of Texas (ABEST)

10/12/2016 11:00:20AM

**761 Texas A&M International University**

GOAL: 1 Provide Instructional and Operations Support

OBJECTIVE: 1 Provide Instructional and Operations Support

STRATEGY: 6 Texas Public Education Grants

Service Categories:

Service: 20      Income: A.2      Age: B.3

CODE	DESCRIPTION	Exp 2015	Est 2016	Bud 2017	BL 2018	BL 2019
------	-------------	----------	----------	----------	---------	---------

**EXPLANATION OF BIENNIAL CHANGE (includes Rider amounts):**

<u>STRATEGY BIENNIAL TOTAL - ALL FUNDS</u>		<u>BIENNIAL CHANGE</u>	<u>EXPLANATION OF BIENNIAL CHANGE</u>	
<u>Base Spending (Est 2016 + Bud 2017)</u>	<u>Baseline Request (BL 2018 + BL 2019)</u>		<u>\$ Amount</u>	<u>Explanation(s) of Amount (must specify MOFs and FTEs)</u>
\$2,431,004	\$2,460,019	\$29,015	\$29,015	Variance in actual expenditures and appropriations
			<u>\$29,015</u>	<b>Total of Explanation of Biennial Change</b>

**761 Texas A&M International University**

GOAL: 2 Provide Infrastructure Support  
 OBJECTIVE: 1 Provide Operation and Maintenance of E&G Space  
 STRATEGY: 1 Educational and General Space Support

Service Categories:  
 Service: 10      Income: A.2      Age: B.3

CODE	DESCRIPTION	Exp 2015	Est 2016	Bud 2017	BL 2018 <sup>(1)</sup>	BL 2019 <sup>(1)</sup>
<b>Efficiency Measures:</b>						
1	Space Utilization Rate of Classrooms	58.00	60.00	60.00	65.00	65.00
2	Space Utilization Rate of Labs	49.00	50.00	60.00	70.00	80.00
<b>Objects of Expense:</b>						
1001	SALARIES AND WAGES	\$1,745,586	\$2,145,113	\$2,145,113	\$0	\$0
1002	OTHER PERSONNEL COSTS	\$12,156	\$13,000	\$13,000	\$0	\$0
2004	UTILITIES	\$1,198,229	\$1,300,000	\$1,300,000	\$0	\$0
<b>TOTAL, OBJECT OF EXPENSE</b>		<b>\$2,955,971</b>	<b>\$3,458,113</b>	<b>\$3,458,113</b>	<b>\$0</b>	<b>\$0</b>
<b>Method of Financing:</b>						
1	General Revenue Fund	\$2,282,030	\$2,524,778	\$2,534,674	\$0	\$0
<b>SUBTOTAL, MOF (GENERAL REVENUE FUNDS)</b>		<b>\$2,282,030</b>	<b>\$2,524,778</b>	<b>\$2,534,674</b>	<b>\$0</b>	<b>\$0</b>
<b>Method of Financing:</b>						
770	Est Oth Educ & Gen Inco	\$673,941	\$933,335	\$923,439	\$0	\$0
<b>SUBTOTAL, MOF (GENERAL REVENUE FUNDS - DEDICATED)</b>		<b>\$673,941</b>	<b>\$933,335</b>	<b>\$923,439</b>	<b>\$0</b>	<b>\$0</b>

(1) - Formula funded strategies are not requested in 2018-19 because amounts are not determined by institutions.



**761 Texas A&M International University**

GOAL: 2 Provide Infrastructure Support  
 OBJECTIVE: 1 Provide Operation and Maintenance of E&G Space  
 STRATEGY: 1 Educational and General Space Support

Service Categories:  
 Service: 10      Income: A.2      Age: B.3

CODE	DESCRIPTION	Exp 2015	Est 2016	Bud 2017	BL 2018 <sup>(1)</sup>	BL 2019 <sup>(1)</sup>
<b>TOTAL, METHOD OF FINANCE (INCLUDING RIDERS)</b>					<b>\$0</b>	<b>\$0</b>
<b>TOTAL, METHOD OF FINANCE (EXCLUDING RIDERS)</b>		<b>\$2,955,971</b>	<b>\$3,458,113</b>	<b>\$3,458,113</b>	<b>\$0</b>	<b>\$0</b>
<b>FULL TIME EQUIVALENT POSITIONS:</b>		<b>51.0</b>	<b>51.0</b>	<b>51.0</b>	<b>51.0</b>	<b>51.0</b>

**STRATEGY DESCRIPTION AND JUSTIFICATION:**

The Infrastructure Support formula distributes funding associated with plant-related formulas and utilities. This formula is driven by the predicted square feet for universities' educational and general activities produced by the Coordinating Board Space Projection Model.

The portion of the formula related to utilities is adjusted to reflect differences in unit costs for purchased utilities, including electricity, natural gas, water and wastewater, and thermal energy.

**EXTERNAL/INTERNAL FACTORS IMPACTING STRATEGY:**

(1) - Formula funded strategies are not requested in 2018-19 because amounts are not determined by institutions.

**761 Texas A&M International University**

GOAL: 2 Provide Infrastructure Support  
 OBJECTIVE: 1 Provide Operation and Maintenance of E&G Space  
 STRATEGY: 1 Educational and General Space Support

Service Categories:  
 Service: 10      Income: A.2      Age: B.3

CODE	DESCRIPTION	Exp 2015	Est 2016	Bud 2017	BL 2018	BL 2019
------	-------------	----------	----------	----------	---------	---------

**EXPLANATION OF BIENNIAL CHANGE (includes Rider amounts):**

<u>STRATEGY BIENNIAL TOTAL - ALL FUNDS</u>		BIENNIAL	<u>EXPLANATION OF BIENNIAL CHANGE</u>	
Base Spending (Est 2016 + Bud 2017)	Baseline Request (BL 2018 + BL 2019)	CHANGE	\$ Amount	Explanation(s) of Amount (must specify MOFs and FTEs)
\$6,916,226	\$0	\$(6,916,226)	\$(6,916,226)	Formula Funded Strategies are not requested in 2018-19 because amounts are not determined by institutions.
			<u>\$(6,916,226)</u>	<b>Total of Explanation of Biennial Change</b>

(1) - Formula funded strategies are not requested in 2018-19 because amounts are not determined by institutions.

**761 Texas A&M International University**

GOAL: 2 Provide Infrastructure Support  
 OBJECTIVE: 1 Provide Operation and Maintenance of E&G Space  
 STRATEGY: 2 Tuition Revenue Bond Retirement

Service Categories:  
 Service: 10      Income: A.2      Age: B.3

CODE	DESCRIPTION	Exp 2015	Est 2016	Bud 2017	BL 2018	BL 2019
<b>Objects of Expense:</b>						
2008	DEBT SERVICE	\$7,795,114	\$6,636,348	\$10,919,798	\$8,660,091	\$8,656,767
<b>TOTAL, OBJECT OF EXPENSE</b>		<b>\$7,795,114</b>	<b>\$6,636,348</b>	<b>\$10,919,798</b>	<b>\$8,660,091</b>	<b>\$8,656,767</b>
<b>Method of Financing:</b>						
1	General Revenue Fund	\$7,795,114	\$6,636,348	\$10,919,798	\$8,660,091	\$8,656,767
<b>SUBTOTAL, MOF (GENERAL REVENUE FUNDS)</b>		<b>\$7,795,114</b>	<b>\$6,636,348</b>	<b>\$10,919,798</b>	<b>\$8,660,091</b>	<b>\$8,656,767</b>
<b>TOTAL, METHOD OF FINANCE (INCLUDING RIDERS)</b>					<b>\$8,660,091</b>	<b>\$8,656,767</b>
<b>TOTAL, METHOD OF FINANCE (EXCLUDING RIDERS)</b>		<b>\$7,795,114</b>	<b>\$6,636,348</b>	<b>\$10,919,798</b>	<b>\$8,660,091</b>	<b>\$8,656,767</b>

**FULL TIME EQUIVALENT POSITIONS:**

**STRATEGY DESCRIPTION AND JUSTIFICATION:**

The funding of TRB retirement covers the cost of existing buildings on campus.

**EXTERNAL/INTERNAL FACTORS IMPACTING STRATEGY:**

**761 Texas A&M International University**

GOAL: 2 Provide Infrastructure Support  
 OBJECTIVE: 1 Provide Operation and Maintenance of E&G Space  
 STRATEGY: 2 Tuition Revenue Bond Retirement

Service Categories:  
 Service: 10      Income: A.2      Age: B.3

CODE	DESCRIPTION	Exp 2015	Est 2016	Bud 2017	BL 2018	BL 2019
------	-------------	----------	----------	----------	---------	---------

**EXPLANATION OF BIENNIAL CHANGE (includes Rider amounts):**

<u>STRATEGY BIENNIAL TOTAL - ALL FUNDS</u>		<u>BIENNIAL CHANGE</u>	<u>EXPLANATION OF BIENNIAL CHANGE</u>	
<u>Base Spending (Est 2016 + Bud 2017)</u>	<u>Baseline Request (BL 2018 + BL 2019)</u>		<u>\$ Amount</u>	<u>Explanation(s) of Amount (must specify MOFs and FTEs)</u>
\$17,556,146	\$17,316,858	\$(239,288)	\$(239,288)	Decrease in debt service payments for FY 18 & FY 19 because several TRB projects will be paid off in FY 17.
			<u>\$(239,288)</u>	<b>Total of Explanation of Biennial Change</b>

**761 Texas A&M International University**

GOAL: 2 Provide Infrastructure Support  
 OBJECTIVE: 1 Provide Operation and Maintenance of E&G Space  
 STRATEGY: 5 Small Institution Supplement

Service Categories:  
 Service: 19      Income: A.2      Age: B.3

CODE	DESCRIPTION	Exp 2015	Est 2016	Bud 2017	BL 2018 <sup>(1)</sup>	BL 2019 <sup>(1)</sup>
<b>Objects of Expense:</b>						
1002	OTHER PERSONNEL COSTS	\$4,076	\$0	\$0	\$0	\$0
1005	FACULTY SALARIES	\$418,050	\$366,900	\$366,900	\$0	\$0
<b>TOTAL, OBJECT OF EXPENSE</b>		<b>\$422,126</b>	<b>\$366,900</b>	<b>\$366,900</b>	<b>\$0</b>	<b>\$0</b>
<b>Method of Financing:</b>						
1	General Revenue Fund	\$418,050	\$366,900	\$366,900	\$0	\$0
<b>SUBTOTAL, MOF (GENERAL REVENUE FUNDS)</b>		<b>\$418,050</b>	<b>\$366,900</b>	<b>\$366,900</b>	<b>\$0</b>	<b>\$0</b>
<b>Method of Financing:</b>						
770	Est Oth Educ & Gen Inco	\$4,076	\$0	\$0	\$0	\$0
<b>SUBTOTAL, MOF (GENERAL REVENUE FUNDS - DEDICATED)</b>		<b>\$4,076</b>	<b>\$0</b>	<b>\$0</b>	<b>\$0</b>	<b>\$0</b>
<b>TOTAL, METHOD OF FINANCE (INCLUDING RIDERS)</b>					<b>\$0</b>	<b>\$0</b>
<b>TOTAL, METHOD OF FINANCE (EXCLUDING RIDERS)</b>		<b>\$422,126</b>	<b>\$366,900</b>	<b>\$366,900</b>	<b>\$0</b>	<b>\$0</b>
<b>FULL TIME EQUIVALENT POSITIONS:</b>		<b>6.2</b>	<b>6.2</b>	<b>6.2</b>	<b>6.2</b>	<b>6.2</b>

(1) - Formula funded strategies are not requested in 2018-19 because amounts are not determined by institutions.

**761 Texas A&M International University**

GOAL: 2 Provide Infrastructure Support  
 OBJECTIVE: 1 Provide Operation and Maintenance of E&G Space  
 STRATEGY: 5 Small Institution Supplement

Service Categories:  
 Service: 19      Income: A.2      Age: B.3

CODE	DESCRIPTION	Exp 2015	Est 2016	Bud 2017	BL 2018	BL 2019
------	-------------	----------	----------	----------	---------	---------

(1)      (1)

**STRATEGY DESCRIPTION AND JUSTIFICATION:**

The small institution supplement funding assists growing universities as they transition from small to mid-size universities.

**EXTERNAL/INTERNAL FACTORS IMPACTING STRATEGY:**

**EXPLANATION OF BIENNIAL CHANGE (includes Rider amounts):**

<u>STRATEGY BIENNIAL TOTAL - ALL FUNDS</u>		<u>BIENNIAL</u>	<u>EXPLANATION OF BIENNIAL CHANGE</u>	
Base Spending (Est 2016 + Bud 2017)	Baseline Request (BL 2018 + BL 2019)	CHANGE	\$ Amount	Explanation(s) of Amount (must specify MOFs and FTEs)
\$733,800	\$0	\$(733,800)	\$(733,800)	Formula Funded Strategies are not requested in 2018-19 because amounts are not determined by institutions.
			<b>\$(733,800)</b>	<b>Total of Explanation of Biennial Change</b>

(1) - Formula funded strategies are not requested in 2018-19 because amounts are not determined by institutions.

**761 Texas A&M International University**

GOAL: 3 Provide Special Item Support  
 OBJECTIVE: 1 Instructional Support Special Item Support Service Categories:  
 STRATEGY: 3 Academic and Student Support Service: 19 Income: A.2 Age: B.3

CODE	DESCRIPTION	Exp 2015	Est 2016	Bud 2017	BL 2018	BL 2019
<b>Objects of Expense:</b>						
1005	FACULTY SALARIES	\$1,841,015	\$1,841,015	\$1,841,015	\$1,489,696	\$1,489,696
<b>TOTAL, OBJECT OF EXPENSE</b>		<b>\$1,841,015</b>	<b>\$1,841,015</b>	<b>\$1,841,015</b>	<b>\$1,489,696</b>	<b>\$1,489,696</b>
<b>Method of Financing:</b>						
1	General Revenue Fund	\$1,841,015	\$1,841,015	\$1,841,015	\$1,489,696	\$1,489,696
<b>SUBTOTAL, MOF (GENERAL REVENUE FUNDS)</b>		<b>\$1,841,015</b>	<b>\$1,841,015</b>	<b>\$1,841,015</b>	<b>\$1,489,696</b>	<b>\$1,489,696</b>
<b>TOTAL, METHOD OF FINANCE (INCLUDING RIDERS)</b>					<b>\$1,489,696</b>	<b>\$1,489,696</b>
<b>TOTAL, METHOD OF FINANCE (EXCLUDING RIDERS)</b>		<b>\$1,841,015</b>	<b>\$1,841,015</b>	<b>\$1,841,015</b>	<b>\$1,489,696</b>	<b>\$1,489,696</b>
<b>FULL TIME EQUIVALENT POSITIONS:</b>		<b>21.6</b>	<b>22.0</b>	<b>22.0</b>	<b>17.0</b>	<b>17.0</b>

**STRATEGY DESCRIPTION AND JUSTIFICATION:**

Academic and Student Support provides resources to recruit and retain faculty to provide students with a quality education, along with student scholarships and assistantships.

**EXTERNAL/INTERNAL FACTORS IMPACTING STRATEGY:**

**761 Texas A&M International University**

GOAL: 3 Provide Special Item Support  
 OBJECTIVE: 1 Instructional Support Special Item Support Service Categories:  
 STRATEGY: 3 Academic and Student Support Service: 19 Income: A.2 Age: B.3

CODE	DESCRIPTION	Exp 2015	Est 2016	Bud 2017	BL 2018	BL 2019
------	-------------	----------	----------	----------	---------	---------

Academic and Student Support represents 7% of the University’s total appropriations and funds 9% of E&G faculty. It is base funding for the University. Over the next two years, this special item funding will be used to retain and recruit faculty members and to provide opportunities for them to engage in sponsored research, which will increase revenues to the State of Texas. In addition, the funding of these faculty positions helps decrease our reliance on adjunct faculty, which is critical for maintaining and improving persistence rates for first- and second-year students.

Additional information on Academic and Student Support is available in Schedule 9, Special Item Information.

**EXPLANATION OF BIENNIAL CHANGE (includes Rider amounts):**

<u>STRATEGY BIENNIAL TOTAL - ALL FUNDS</u>		<u>BIENNIAL</u>	<u>EXPLANATION OF BIENNIAL CHANGE</u>	
Base Spending (Est 2016 + Bud 2017)	Baseline Request (BL 2018 + BL 2019)	CHANGE	\$ Amount	Explanation(s) of Amount (must specify MOFs and FTEs)
\$3,682,030	\$2,979,392	\$(702,638)	\$(702,638)	This represents the 4% reduction.
			<b>\$(702,638)</b>	<b>Total of Explanation of Biennial Change</b>



**761 Texas A&M International University**

GOAL: 3 Provide Special Item Support  
 OBJECTIVE: 3 Public Service Special Item Support  
 STRATEGY: 1 Institute for International Trade

Service Categories:  
 Service: 13      Income: A.2      Age: B.3

CODE	DESCRIPTION	Exp 2015	Est 2016	Bud 2017	BL 2018	BL 2019
<b>Objects of Expense:</b>						
1001	SALARIES AND WAGES	\$234,619	\$239,920	\$239,920	\$239,920	\$239,920
1002	OTHER PERSONNEL COSTS	\$1,352	\$0	\$0	\$0	\$0
2001	PROFESSIONAL FEES AND SERVICES	\$10,793	\$10,000	\$10,000	\$10,000	\$10,000
2009	OTHER OPERATING EXPENSE	\$7,156	\$5,000	\$5,000	\$5,000	\$5,000
5000	CAPITAL EXPENDITURES	\$46,580	\$15,000	\$15,000	\$15,000	\$15,000
<b>TOTAL, OBJECT OF EXPENSE</b>		<b>\$300,500</b>	<b>\$269,920</b>	<b>\$269,920</b>	<b>\$269,920</b>	<b>\$269,920</b>
<b>Method of Financing:</b>						
1	General Revenue Fund	\$87,720	\$57,140	\$57,140	\$57,140	\$57,140
<b>SUBTOTAL, MOF (GENERAL REVENUE FUNDS)</b>		<b>\$87,720</b>	<b>\$57,140</b>	<b>\$57,140</b>	<b>\$57,140</b>	<b>\$57,140</b>
<b>Method of Financing:</b>						
770	Est Oth Educ & Gen Inco	\$74,893	\$74,893	\$74,893	\$74,893	\$74,893
<b>SUBTOTAL, MOF (GENERAL REVENUE FUNDS - DEDICATED)</b>		<b>\$74,893</b>	<b>\$74,893</b>	<b>\$74,893</b>	<b>\$74,893</b>	<b>\$74,893</b>
<b>Method of Financing:</b>						
777	Interagency Contracts	\$137,887	\$137,887	\$137,887	\$137,887	\$137,887

**761 Texas A&M International University**

GOAL: 3 Provide Special Item Support  
 OBJECTIVE: 3 Public Service Special Item Support  
 STRATEGY: 1 Institute for International Trade

Service Categories:  
 Service: 13      Income: A.2      Age: B.3

CODE	DESCRIPTION	Exp 2015	Est 2016	Bud 2017	BL 2018	BL 2019
<b>SUBTOTAL, MOF (OTHER FUNDS)</b>		<b>\$137,887</b>	<b>\$137,887</b>	<b>\$137,887</b>	<b>\$137,887</b>	<b>\$137,887</b>
<b>TOTAL, METHOD OF FINANCE (INCLUDING RIDERS)</b>					<b>\$269,920</b>	<b>\$269,920</b>
<b>TOTAL, METHOD OF FINANCE (EXCLUDING RIDERS)</b>		<b>\$300,500</b>	<b>\$269,920</b>	<b>\$269,920</b>	<b>\$269,920</b>	<b>\$269,920</b>
<b>FULL TIME EQUIVALENT POSITIONS:</b>		<b>9.6</b>	<b>9.6</b>	<b>9.6</b>	<b>9.6</b>	<b>9.6</b>

**STRATEGY DESCRIPTION AND JUSTIFICATION:**

The Institute supports the international mission of the University by collecting and publishing economic indicators for the Texas-Mexico border region, promoting research on international trade and related issues, and encouraging scholarly productivity of its faculty and students. This funding has made possible the establishment of a database containing monthly border trade, including vehicular, passenger, truck, rail and pedestrian traffic on all major Texas-Mexico border points of entry. This information is available to business, government agencies, other institutions and the general public. The funding also supports numerous studies and research monographs and publications dealing with economic development and competitiveness of the border region.

**EXTERNAL/INTERNAL FACTORS IMPACTING STRATEGY:**

**761 Texas A&M International University**

GOAL: 3 Provide Special Item Support  
 OBJECTIVE: 3 Public Service Special Item Support Service Categories:  
 STRATEGY: 1 Institute for International Trade Service: 13 Income: A.2 Age: B.3

CODE	DESCRIPTION	Exp 2015	Est 2016	Bud 2017	BL 2018	BL 2019
------	-------------	----------	----------	----------	---------	---------

The Institute will continue to publish the highly regarded International Trade Journal and will create a database for manuscript submissions and acceptance information for the Journal. The Institute is also working on a partnership with Taylor & Francis/Routledge, the Journal’s current publishers, to get the Journal into the Social Science Citation Index which provides researchers and students with access to bibliographic and citation information needed to find research data, journals and researchers. The Institute will also expand cross-border relationships with Mexican and Central American businesses and continue to provide research opportunities in international business for faculty. As the Institute matures and becomes more established in the academic community, it will be able to attract higher level scholars, elevating the scholarly standing of the University. Its International Trade Journal, already well-established in its 30th year of publication, should continue to become increasingly selective and more widely known.

Additional information on the Institute for International Trade is available in Schedule 9, Special Item Information.

**EXPLANATION OF BIENNIAL CHANGE (includes Rider amounts):**

<u>STRATEGY BIENNIAL TOTAL - ALL FUNDS</u>		<u>BIENNIAL</u>	<u>EXPLANATION OF BIENNIAL CHANGE</u>	
Base Spending (Est 2016 + Bud 2017)	Baseline Request (BL 2018 + BL 2019)	CHANGE	\$ Amount	Explanation(s) of Amount (must specify MOFs and FTEs)
\$539,840	\$539,840	\$0	\$0	No variance. Baseline Funding and FTE requests to remain the same to continue to support ongoing initiatives and programs.
			<b>\$0</b>	<b>Total of Explanation of Biennial Change</b>

**761 Texas A&M International University**

GOAL: 3 Provide Special Item Support  
 OBJECTIVE: 3 Public Service Special Item Support  
 STRATEGY: 2 Small Business Development Center

Service Categories:  
 Service: 13      Income: A.2      Age: B.3

CODE	DESCRIPTION	Exp 2015	Est 2016	Bud 2017	BL 2018	BL 2019
<b>Objects of Expense:</b>						
1001	SALARIES AND WAGES	\$179,228	\$181,500	\$181,500	\$181,500	\$181,500
2003	CONSUMABLE SUPPLIES	\$3,703	\$0	\$0	\$0	\$0
<b>TOTAL, OBJECT OF EXPENSE</b>		<b>\$182,931</b>	<b>\$181,500</b>	<b>\$181,500</b>	<b>\$181,500</b>	<b>\$181,500</b>
<b>Method of Financing:</b>						
1	General Revenue Fund	\$181,500	\$181,500	\$181,500	\$181,500	\$181,500
<b>SUBTOTAL, MOF (GENERAL REVENUE FUNDS)</b>		<b>\$181,500</b>	<b>\$181,500</b>	<b>\$181,500</b>	<b>\$181,500</b>	<b>\$181,500</b>
<b>Method of Financing:</b>						
770	Est Oth Educ & Gen Inco	\$1,431	\$0	\$0	\$0	\$0
<b>SUBTOTAL, MOF (GENERAL REVENUE FUNDS - DEDICATED)</b>		<b>\$1,431</b>	<b>\$0</b>	<b>\$0</b>	<b>\$0</b>	<b>\$0</b>
<b>TOTAL, METHOD OF FINANCE (INCLUDING RIDERS)</b>					<b>\$181,500</b>	<b>\$181,500</b>
<b>TOTAL, METHOD OF FINANCE (EXCLUDING RIDERS)</b>		<b>\$182,931</b>	<b>\$181,500</b>	<b>\$181,500</b>	<b>\$181,500</b>	<b>\$181,500</b>
<b>FULL TIME EQUIVALENT POSITIONS:</b>		<b>3.3</b>	<b>3.3</b>	<b>3.3</b>	<b>3.3</b>	<b>3.3</b>

**761 Texas A&M International University**

GOAL:	3	Provide Special Item Support	
OBJECTIVE:	3	Public Service Special Item Support	Service Categories:
STRATEGY:	2	Small Business Development Center	Service: 13      Income: A.2      Age: B.3

CODE	DESCRIPTION	Exp 2015	Est 2016	Bud 2017	BL 2018	BL 2019
------	-------------	----------	----------	----------	---------	---------

**STRATEGY DESCRIPTION AND JUSTIFICATION:**

The Small Business Development Center offers services which promote the growth, expansion, innovation, increased productivity, and improved management for small businesses. These services, which include individual business counseling and technical assistance, group training seminars and workshops, advocacy, and research information, not only facilitate new business start-ups and help existing business expand, but also strengthen the economies of Webb, Zapata and Jim Hogg counties.

**EXTERNAL/INTERNAL FACTORS IMPACTING STRATEGY:**

The South-West Texas Border Small Business Development Center (SBDC) Network provides consulting and technical assistance to the small business community in Webb, Zapata, and Jim Hogg Counties. The goal is to help start and grow small businesses in the region.

- The mission of the SBDC is to aid entrepreneurs in creating regional economic growth through development and expansion of small businesses by fostering innovation, increased productivity, and improved management.
- The Eagle Ford Shale has generated an enormous economic impact in the region, and there is no sign of it diminishing in the near future.
- Entrepreneurs offer new ideas and services in many areas, including road expansion and maintenance, housing, food service, and more.
- New and expanded small businesses will increase employment opportunities in the region.
- Allows for development of new partnerships with local financial institutions who will fund these entrepreneurial efforts.

Additional information on the Small Business Development Center is available in Schedule 9, Special Item Information.

**761 Texas A&M International University**

GOAL: 3 Provide Special Item Support  
 OBJECTIVE: 3 Public Service Special Item Support Service Categories:  
 STRATEGY: 2 Small Business Development Center Service: 13 Income: A.2 Age: B.3

CODE	DESCRIPTION	Exp 2015	Est 2016	Bud 2017	BL 2018	BL 2019
------	-------------	----------	----------	----------	---------	---------

**EXPLANATION OF BIENNIAL CHANGE (includes Rider amounts):**

<u>STRATEGY BIENNIAL TOTAL - ALL FUNDS</u>		BIENNIAL	<u>EXPLANATION OF BIENNIAL CHANGE</u>	
Base Spending (Est 2016 + Bud 2017)	Baseline Request (BL 2018 + BL 2019)	CHANGE	\$ Amount	Explanation(s) of Amount (must specify MOFs and FTEs)
\$363,000	\$363,000	\$0	\$0	No variance. Baseline Funding and FTE requests to remain the same to continue to support ongoing initiatives and programs.
			<b>\$0</b>	<b>Total of Explanation of Biennial Change</b>

**761 Texas A&M International University**

GOAL: 3 Provide Special Item Support  
 OBJECTIVE: 4 Institutional Support Special Item Support  
 STRATEGY: 1 Institutional Enhancement

Service Categories:  
 Service: 19      Income: A.2      Age: B.3

CODE	DESCRIPTION	Exp 2015	Est 2016	Bud 2017	BL 2018	BL 2019
<b>Objects of Expense:</b>						
1005	FACULTY SALARIES	\$6,031,718	\$5,926,726	\$5,926,726	\$5,926,726	\$5,926,726
<b>TOTAL, OBJECT OF EXPENSE</b>		<b>\$6,031,718</b>	<b>\$5,926,726</b>	<b>\$5,926,726</b>	<b>\$5,926,726</b>	<b>\$5,926,726</b>
<b>Method of Financing:</b>						
1	General Revenue Fund	\$5,926,726	\$5,926,726	\$5,926,726	\$5,926,726	\$5,926,726
<b>SUBTOTAL, MOF (GENERAL REVENUE FUNDS)</b>		<b>\$5,926,726</b>	<b>\$5,926,726</b>	<b>\$5,926,726</b>	<b>\$5,926,726</b>	<b>\$5,926,726</b>
<b>Method of Financing:</b>						
770	Est Oth Educ & Gen Inco	\$104,992	\$0	\$0	\$0	\$0
<b>SUBTOTAL, MOF (GENERAL REVENUE FUNDS - DEDICATED)</b>		<b>\$104,992</b>	<b>\$0</b>	<b>\$0</b>	<b>\$0</b>	<b>\$0</b>
<b>TOTAL, METHOD OF FINANCE (INCLUDING RIDERS)</b>					<b>\$5,926,726</b>	<b>\$5,926,726</b>
<b>TOTAL, METHOD OF FINANCE (EXCLUDING RIDERS)</b>		<b>\$6,031,718</b>	<b>\$5,926,726</b>	<b>\$5,926,726</b>	<b>\$5,926,726</b>	<b>\$5,926,726</b>
<b>FULL TIME EQUIVALENT POSITIONS:</b>		<b>96.5</b>	<b>91.2</b>	<b>91.0</b>	<b>91.0</b>	<b>91.0</b>

**761 Texas A&M International University**

GOAL:	3	Provide Special Item Support	
OBJECTIVE:	4	Institutional Support Special Item Support	Service Categories:
STRATEGY:	1	Institutional Enhancement	Service: 19      Income: A.2      Age: B.3

CODE	DESCRIPTION	Exp 2015	Est 2016	Bud 2017	BL 2018	BL 2019
------	-------------	----------	----------	----------	---------	---------

**STRATEGY DESCRIPTION AND JUSTIFICATION:**

The 74th Texas Legislature authorized an expansion of the University to 4-year status in fall, 1995. The South Texas Border Initiative supported the hiring of faculty and staff to handle the rapid growth in enrollment and the expansion of academic programs. Institutional Enhancement currently funds 24% of the University's total appropriation and 40% of E&G faculty. It represents a significant portion of base funding.

**EXTERNAL/INTERNAL FACTORS IMPACTING STRATEGY:**

As mentioned above, Institutional Enhancement represents 24% of the University's total appropriations, funds 40% of E&G faculty, and is a significant portion of the University's base funding. Over the next two years, this special item funding will be used to retain and recruit faculty members and to provide opportunities for them to engage in sponsored research, which will increase revenues to the State of Texas. In addition, the funding of these faculty positions helps decrease our reliance on adjunct faculty, which is critical for maintaining and improving persistence rates for first-and second-year students.

Additional information on Institutional Enhancement is available in Schedule 9, Special Item Information.



**761 Texas A&M International University**

GOAL: 3 Provide Special Item Support  
 OBJECTIVE: 4 Institutional Support Special Item Support Service Categories:  
 STRATEGY: 1 Institutional Enhancement Service: 19 Income: A.2 Age: B.3

CODE	DESCRIPTION	Exp 2015	Est 2016	Bud 2017	BL 2018	BL 2019
------	-------------	----------	----------	----------	---------	---------

**EXPLANATION OF BIENNIAL CHANGE (includes Rider amounts):**

<u>STRATEGY BIENNIAL TOTAL - ALL FUNDS</u>		<u>BIENNIAL</u>	<u>EXPLANATION OF BIENNIAL CHANGE</u>	
Base Spending (Est 2016 + Bud 2017)	Baseline Request (BL 2018 + BL 2019)	CHANGE	\$ Amount	Explanation(s) of Amount (must specify MOFs and FTEs)
\$11,853,452	\$11,853,452	\$0	\$0	No variance. Baseline Funding and FTE requests to remain the same to continue to support ongoing initiatives and programs.
			<b>\$0</b>	<b>Total of Explanation of Biennial Change</b>

**761 Texas A&M International University**

GOAL: 3 Provide Special Item Support

OBJECTIVE: 4 Institutional Support Special Item Support

STRATEGY: 3 Outreach and Enrollment

Service Categories:

Service: 19

Income: A.2

Age: B.3

CODE	DESCRIPTION	Exp 2015	Est 2016	Bud 2017	BL 2018	BL 2019
<b>Objects of Expense:</b>						
1001	SALARIES AND WAGES	\$551,562	\$530,000	\$530,000	\$530,000	\$530,000
1005	FACULTY SALARIES	\$213,337	\$220,000	\$220,000	\$220,000	\$220,000
<b>TOTAL, OBJECT OF EXPENSE</b>		<b>\$764,899</b>	<b>\$750,000</b>	<b>\$750,000</b>	<b>\$750,000</b>	<b>\$750,000</b>
<b>Method of Financing:</b>						
1	General Revenue Fund	\$750,000	\$750,000	\$750,000	\$750,000	\$750,000
<b>SUBTOTAL, MOF (GENERAL REVENUE FUNDS)</b>		<b>\$750,000</b>	<b>\$750,000</b>	<b>\$750,000</b>	<b>\$750,000</b>	<b>\$750,000</b>
<b>Method of Financing:</b>						
770	Est Oth Educ & Gen Inco	\$14,899	\$0	\$0	\$0	\$0
<b>SUBTOTAL, MOF (GENERAL REVENUE FUNDS - DEDICATED)</b>		<b>\$14,899</b>	<b>\$0</b>	<b>\$0</b>	<b>\$0</b>	<b>\$0</b>
<b>TOTAL, METHOD OF FINANCE (INCLUDING RIDERS)</b>					<b>\$750,000</b>	<b>\$750,000</b>
<b>TOTAL, METHOD OF FINANCE (EXCLUDING RIDERS)</b>		<b>\$764,899</b>	<b>\$750,000</b>	<b>\$750,000</b>	<b>\$750,000</b>	<b>\$750,000</b>
<b>FULL TIME EQUIVALENT POSITIONS:</b>		<b>10.9</b>	<b>10.9</b>	<b>10.9</b>	<b>10.9</b>	<b>10.9</b>

**761 Texas A&M International University**

GOAL:	3	Provide Special Item Support	
OBJECTIVE:	4	Institutional Support Special Item Support	Service Categories:
STRATEGY:	3	Outreach and Enrollment	Service: 19      Income: A.2      Age: B.3

CODE	DESCRIPTION	Exp 2015	Est 2016	Bud 2017	BL 2018	BL 2019
------	-------------	----------	----------	----------	---------	---------

**STRATEGY DESCRIPTION AND JUSTIFICATION:**

The University prepares students for success through an aggressive outreach to local and regional schools, establishing one-on-one relationships to guide high school students through the financial aid process. Upon entering the University, a comprehensive program of advisement and academic support ensures retention and timely graduation. This funding enables the University to provide non-traditional students with the environment and tools necessary for success and makes Closing the Gaps possible. The resources provided by this funding enable the State's underserved population to become productive participants in the Texas economy.

**EXTERNAL/INTERNAL FACTORS IMPACTING STRATEGY:**

- TAMIU will increase outreach to high school students beyond a 120 mile radius of the University therefore increasing overall student enrollment and semester credit hour production.
- Increased offerings of required supplemental instruction for challenging core courses resulting in increased GPA and increased retention rates.
- Expansion of summer academic boot camp offerings in mathematics and writing.
- Initiation of HB 5 College Prep Courses in mathematics and language arts made possible because of TAMIU with local area high schools and local community college.
- Expanded Texas Success Initiative Assessment (TSIA) testing in area high schools to increase participation and college readiness.
- Offer more diverse Freshman Seminar course options in the core curriculum that include service learning, honors, study abroad, and study away experiences.

Additional information on Outreach and Enrollment is available in Schedule 9, Special Item Information.

**761 Texas A&M International University**

GOAL: 3 Provide Special Item Support  
 OBJECTIVE: 4 Institutional Support Special Item Support Service Categories:  
 STRATEGY: 3 Outreach and Enrollment Service: 19 Income: A.2 Age: B.3

CODE	DESCRIPTION	Exp 2015	Est 2016	Bud 2017	BL 2018	BL 2019
------	-------------	----------	----------	----------	---------	---------

**EXPLANATION OF BIENNIAL CHANGE (includes Rider amounts):**

<u>STRATEGY BIENNIAL TOTAL - ALL FUNDS</u>		<u>BIENNIAL CHANGE</u>	<u>EXPLANATION OF BIENNIAL CHANGE</u>	
<u>Base Spending (Est 2016 + Bud 2017)</u>	<u>Baseline Request (BL 2018 + BL 2019)</u>		<u>\$ Amount</u>	<u>Explanation(s) of Amount (must specify MOFs and FTEs)</u>
\$1,500,000	\$1,500,000	\$0	\$0	No variance. Baseline Funding and FTE requests to remain the same to continue to support ongoing initiatives and programs.
			<b>\$0</b>	<b>Total of Explanation of Biennial Change</b>

**761 Texas A&M International University**

GOAL: 3 Provide Special Item Support  
 OBJECTIVE: 5 Exceptional Item Request  
 STRATEGY: 1 Exceptional Item Request

Service Categories:  
 Service: 19      Income: A.2      Age: B.3

CODE	DESCRIPTION	Exp 2015	Est 2016	Bud 2017	BL 2018	BL 2019
<b>Objects of Expense:</b>						
1001	SALARIES AND WAGES	\$0	\$0	\$0	\$0	\$0
1005	FACULTY SALARIES	\$0	\$0	\$0	\$0	\$0
2009	OTHER OPERATING EXPENSE	\$0	\$0	\$0	\$0	\$0
5000	CAPITAL EXPENDITURES	\$0	\$0	\$0	\$0	\$0
<b>TOTAL, OBJECT OF EXPENSE</b>		<b>\$0</b>	<b>\$0</b>	<b>\$0</b>	<b>\$0</b>	<b>\$0</b>
<b>Method of Financing:</b>						
1	General Revenue Fund	\$0	\$0	\$0	\$0	\$0
<b>SUBTOTAL, MOF (GENERAL REVENUE FUNDS)</b>		<b>\$0</b>	<b>\$0</b>	<b>\$0</b>	<b>\$0</b>	<b>\$0</b>
<b>TOTAL, METHOD OF FINANCE (INCLUDING RIDERS)</b>					<b>\$0</b>	<b>\$0</b>
<b>TOTAL, METHOD OF FINANCE (EXCLUDING RIDERS)</b>		<b>\$0</b>	<b>\$0</b>	<b>\$0</b>	<b>\$0</b>	<b>\$0</b>
<b>FULL TIME EQUIVALENT POSITIONS:</b>		<b>0.0</b>	<b>0.0</b>	<b>0.0</b>	<b>0.0</b>	<b>0.0</b>
<b>STRATEGY DESCRIPTION AND JUSTIFICATION:</b>						

**761 Texas A&M International University**

GOAL: 3 Provide Special Item Support  
 OBJECTIVE: 5 Exceptional Item Request  
 STRATEGY: 1 Exceptional Item Request

Service Categories:  
 Service: 19 Income: A.2 Age: B.3

CODE	DESCRIPTION	Exp 2015	Est 2016	Bud 2017	BL 2018	BL 2019
------	-------------	----------	----------	----------	---------	---------

**EXTERNAL/INTERNAL FACTORS IMPACTING STRATEGY:**

**EXPLANATION OF BIENNIAL CHANGE (includes Rider amounts):**

<u>STRATEGY BIENNIAL TOTAL - ALL FUNDS</u>		<u>BIENNIAL CHANGE</u>	<u>EXPLANATION OF BIENNIAL CHANGE</u>	
<u>Base Spending (Est 2016 + Bud 2017)</u>	<u>Baseline Request (BL 2018 + BL 2019)</u>		<u>\$ Amount</u>	<u>Explanation(s) of Amount (must specify MOFs and FTEs)</u>
\$0	\$0	\$0	\$0	Exceptional item request for FY 2018 - 19.
			<u>\$0</u>	<b>Total of Explanation of Biennial Change</b>

**761 Texas A&M International University**

GOAL:           6   Research Funds  
 OBJECTIVE:    1   Research Funds  
 STRATEGY:    1   Research Development Fund

Service Categories:  
 Service: 21       Income: A.2       Age: B.3

CODE	DESCRIPTION	Exp 2015	Est 2016	Bud 2017	BL 2018	BL 2019
<b>Objects of Expense:</b>						
1001	SALARIES AND WAGES	\$246,539	\$0	\$0	\$0	\$0
<b>TOTAL, OBJECT OF EXPENSE</b>		<b>\$246,539</b>	<b>\$0</b>	<b>\$0</b>	<b>\$0</b>	<b>\$0</b>
<b>Method of Financing:</b>						
1	General Revenue Fund	\$246,539	\$0	\$0	\$0	\$0
<b>SUBTOTAL, MOF (GENERAL REVENUE FUNDS)</b>		<b>\$246,539</b>	<b>\$0</b>	<b>\$0</b>	<b>\$0</b>	<b>\$0</b>
<b>TOTAL, METHOD OF FINANCE (INCLUDING RIDERS)</b>					<b>\$0</b>	<b>\$0</b>
<b>TOTAL, METHOD OF FINANCE (EXCLUDING RIDERS)</b>		<b>\$246,539</b>	<b>\$0</b>	<b>\$0</b>	<b>\$0</b>	<b>\$0</b>
<b>FULL TIME EQUIVALENT POSITIONS:</b>		<b>3.9</b>	<b>0.0</b>	<b>0.0</b>	<b>0.0</b>	<b>0.0</b>

**STRATEGY DESCRIPTION AND JUSTIFICATION:**

The Research Development Fund is distributed among eligible institutions based on the average amount of restricted research funds expended by each institution per year for the three preceding fiscal years.

The purpose of these funds is to promote research capacity.

**761 Texas A&M International University**

GOAL: 6 Research Funds  
 OBJECTIVE: 1 Research Funds  
 STRATEGY: 1 Research Development Fund

Service Categories:  
 Service: 21      Income: A.2      Age: B.3

CODE	DESCRIPTION	Exp 2015	Est 2016	Bud 2017	BL 2018	BL 2019
------	-------------	----------	----------	----------	---------	---------

**EXTERNAL/INTERNAL FACTORS IMPACTING STRATEGY:**

**EXPLANATION OF BIENNIAL CHANGE (includes Rider amounts):**

<u>STRATEGY BIENNIAL TOTAL - ALL FUNDS</u>		<u>BIENNIAL</u>	<u>EXPLANATION OF BIENNIAL CHANGE</u>	
Base Spending (Est 2016 + Bud 2017)	Baseline Request (BL 2018 + BL 2019)	CHANGE	\$ Amount	Explanation(s) of Amount (must specify MOFs and FTEs)
\$0	\$0	\$0	\$0	Comprehensive Research Fund has replaced Research Funds in FY 2016.
			<b>\$0</b>	<b>Total of Explanation of Biennial Change</b>



**761 Texas A&M International University**

GOAL:	6	Research Funds		
OBJECTIVE:	3	Comprehensive Research Fund	Service Categories:	
STRATEGY:	1	Comprehensive Research Fund	Service: 21	Income: A.2      Age: B.3

CODE	DESCRIPTION	Exp 2015	Est 2016	Bud 2017	BL 2018	BL 2019
<b>Objects of Expense:</b>						
1001	SALARIES AND WAGES	\$0	\$213,309	\$213,309	\$0	\$0
<b>TOTAL, OBJECT OF EXPENSE</b>		<b>\$0</b>	<b>\$213,309</b>	<b>\$213,309</b>	<b>\$0</b>	<b>\$0</b>
<b>Method of Financing:</b>						
1	General Revenue Fund	\$0	\$213,309	\$213,309	\$0	\$0
<b>SUBTOTAL, MOF (GENERAL REVENUE FUNDS)</b>		<b>\$0</b>	<b>\$213,309</b>	<b>\$213,309</b>	<b>\$0</b>	<b>\$0</b>
<b>TOTAL, METHOD OF FINANCE (INCLUDING RIDERS)</b>					<b>\$0</b>	<b>\$0</b>
<b>TOTAL, METHOD OF FINANCE (EXCLUDING RIDERS)</b>		<b>\$0</b>	<b>\$213,309</b>	<b>\$213,309</b>	<b>\$0</b>	<b>\$0</b>
<b>FULL TIME EQUIVALENT POSITIONS:</b>		<b>0.0</b>	<b>3.9</b>	<b>3.9</b>	<b>0.0</b>	<b>0.0</b>

**STRATEGY DESCRIPTION AND JUSTIFICATION:**

**EXTERNAL/INTERNAL FACTORS IMPACTING STRATEGY:**

**761 Texas A&M International University**

GOAL: 6 Research Funds  
 OBJECTIVE: 3 Comprehensive Research Fund Service Categories:  
 STRATEGY: 1 Comprehensive Research Fund Service: 21 Income: A.2 Age: B.3

CODE	DESCRIPTION	Exp 2015	Est 2016	Bud 2017	BL 2018	BL 2019
------	-------------	----------	----------	----------	---------	---------

**EXPLANATION OF BIENNIAL CHANGE (includes Rider amounts):**

<u>STRATEGY BIENNIAL TOTAL - ALL FUNDS</u>		BIENNIAL CHANGE	<u>EXPLANATION OF BIENNIAL CHANGE</u>	
Base Spending (Est 2016 + Bud 2017)	Baseline Request (BL 2018 + BL 2019)		\$ Amount	Explanation(s) of Amount (must specify MOFs and FTEs)
\$426,618	\$0	\$(426,618)	\$(426,618)	Comprehensive Research Fund Strategy are not requested in 2018-19 because amounts are not determined by institutions.
			<u>\$(426,618)</u>	<b>Total of Explanation of Biennial Change</b>

---

**SUMMARY TOTALS:**

<b>OBJECTS OF EXPENSE:</b>	<b>\$37,308,800</b>	<b>\$40,459,353</b>	<b>\$44,912,151</b>	<b>\$19,585,071</b>	<b>\$19,593,986</b>
<b>METHODS OF FINANCE (INCLUDING RIDERS):</b>				<b>\$19,585,071</b>	<b>\$19,593,986</b>
<b>METHODS OF FINANCE (EXCLUDING RIDERS):</b>	<b>\$37,308,800</b>	<b>\$40,459,353</b>	<b>\$44,912,151</b>	<b>\$19,585,071</b>	<b>\$19,593,986</b>
<b>FULL TIME EQUIVALENT POSITIONS:</b>	<b>420.7</b>	<b>520.0</b>	<b>520.0</b>	<b>515.0</b>	<b>515.0</b>

**3.A.1. PROGRAM-LEVEL REQUEST SCHEDULE**  
85th Regular Session, Agency Submission, Version 1

Agency Code: 761		Agency: Texas A&M International University				Prepared By: Fred Juarez					
Date: 08/01/2016						16-17	Requested	Requested	Biennial Total	Biennial Difference	
Goal	Goal Name	Strategy	Strategy Name	Program	Program Name	Base	2018	2019	18-19	\$	%
A	Instruction/Operations	A.1.1.	Operations Support	1	Operations Support	\$37,388,780	\$0	\$0	\$0	(\$37,388,780)	-100.0%
		A.1.2.	Teaching Experience Supplement	1	Teaching Experience Supplement		\$0	\$0	\$0	\$0	
		A.1.3.	Staff Group Insurance Premiums	1	Staff Group Insurance Premiums	\$1,927,428	\$1,056,658	\$1,056,658	\$2,113,316	\$185,888	9.6%
		A.1.4.	Workers' Compensation Insurance	1	Workers' Compensation Insurance	\$52,782	\$26,391	\$26,391	\$52,782	\$0	0.0%
		A.1.5.	Unemployment Compensation Insurance	1	Unemployment Compensation Insurance	\$398	\$199	\$199	\$398	\$0	0.0%
		A.1.6.	Texas Public Education Grants	1	Texas Public Education Grants	\$2,431,004	\$1,223,890	\$1,236,129	\$2,460,019	\$29,015	1.2%
B	Infrastructure Support	B.1.1.	E&G Space Support	1	E&G Space Support	\$6,916,226	\$0	\$0	\$0	(\$6,916,226)	-100.0%
		B.1.2.	Tuition Revenue Bond Retirement	1	Tuition Revenue Bond Retirement	\$17,556,146	\$8,660,091	\$8,656,767	\$17,316,858	(\$239,288)	-1.4%
		B.1.3.	Small Institution Supplement	1	Small Institution Supplement	\$733,800	\$0	\$0	\$0	(\$733,800)	-100.0%
C		C.1.1.	Academic and Student Support	1	Academic and Student Support	\$3,682,030	\$1,489,696	\$1,489,696	\$2,979,392	(\$702,638)	-19.1%
		C.2.1.	Institute for International Trade	1	Institute for International Trade	\$539,840	\$269,920	\$269,920	\$539,840	\$0	0.0%
		C.2.2.	Small Business Development Center	1	Small Business Development Center	\$363,000	\$181,500	\$181,500	\$363,000	\$0	0.0%
		C.3.1.	Institutional Enhancement	1	Instruction	\$11,853,452	\$5,926,726	\$5,926,726	\$11,853,452	\$0	0.0%
C.3.2.	Outreach and Enrollment	1	Outreach and Enrollment	\$1,500,000	\$750,000	\$750,000	\$1,500,000	\$0	0.0%		
D	Research Funds	D.1.1.	Comprehensive Research Fund	1	Comprehensive Research Fund	\$426,618	\$0	\$0	\$0	(\$426,618)	-100.0%
E	Exceptional Item Request	E.1.1.	Academic and Student Support	1	Return to Base - Instruction		\$351,319	\$351,319	\$702,638	\$702,638	
		E.1.2.	Interdisciplinary Engineering Degree Program	1	Interdisciplinary Engineering Degree Program		\$3,000,000	\$3,000,000	\$6,000,000	\$6,000,000	
		E.1.3.	Si Texas Border Health Initiative	1	Si Texas Border Health Initiative		\$1,200,000	\$1,200,000	\$2,400,000	\$2,400,000	

**4.A. Exceptional Item Request Schedule**  
 85th Regular Session, Agency Submission, Version 1  
 Automated Budget and Evaluation System of Texas (ABEST)

DATE: 10/10/2016  
 TIME: 4:49:03PM

Agency code: 761 Agency name: Texas A&M International University

CODE	DESCRIPTION	Excp 2018	Excp 2019
	<b>Item Name:</b> Restoration of 4% Reduction <b>Item Priority:</b> 1 <b>IT Component:</b> No <b>Anticipated Out-year Costs:</b> Yes <b>Involve Contracts &gt; \$50,000:</b> No <b>Includes Funding for the Following Strategy or Strategies:</b> 03-01-03 Academic and Student Support		
<b>OBJECTS OF EXPENSE:</b>			
1005	FACULTY SALARIES	351,319	351,319
<b>TOTAL, OBJECT OF EXPENSE</b>		<b>\$351,319</b>	<b>\$351,319</b>
<b>METHOD OF FINANCING:</b>			
1	General Revenue Fund	351,319	351,319
<b>TOTAL, METHOD OF FINANCING</b>		<b>\$351,319</b>	<b>\$351,319</b>
<b>FULL-TIME EQUIVALENT POSITIONS (FTE):</b>		5.00	5.00

**DESCRIPTION / JUSTIFICATION:**

This item would permit Texas A&M International University to maintain its educational offerings and success in retaining and graduating its students.

- Supports 5 faculty positions.
- Allows quality of programs to remain high by not negatively impacting teaching and research.
- Provides for additional course offerings to assist with students' time to degree.
- The generous increases of the past two sessions have still left the University just below its appropriation prior to the 2011 cuts, and we fear additional cuts now will negatively impact our ability to provide quality instruction to our students.

**EXTERNAL/INTERNAL FACTORS:**

Major accomplishments to date and expected over the next two years:

- Boasting the highest persistence rate among regional universities in the Texas A&M University System, Texas A&M International University believes it can improve persistence and 6-year graduation rates.
- The Higher Education Coordinating Board's 60x30TX plan will be supported.
- The State's underserved population will become productive participants in the Texas economy.

Year established and funding source prior to receiving special item funding:  
 Special Item does not exist at present.

**4.A. Exceptional Item Request Schedule**  
 85th Regular Session, Agency Submission, Version 1  
 Automated Budget and Evaluation System of Texas (ABEST)

DATE: 10/10/2016  
 TIME: 4:49:03PM

Agency code: 761

Agency name:  
 Texas A&M International University

<u>CODE</u>	<u>DESCRIPTION</u>	<u>Excp 2018</u>	<u>Excp 2019</u>
-------------	--------------------	------------------	------------------

Formula Funding:

Non-general revenue:

Consequences of not funding:

Any reduction in funding will lead to a reduction in faculty negatively impacting teaching and research, in part, by reducing course offerings.

**DESCRIPTION OF ANTICIPATED OUT-YEAR COSTS :**

Restoration of 4% Reduction. 2018-2019 Requested Amount: \$702,638

Any reduction in funding will lead to a reduction in faculty negatively impacting teaching and research, in part, by reducing course offerings.

**ESTIMATED ANTICIPATED OUT-YEAR COSTS FOR ITEM:**

<u>2020</u>	<u>2021</u>	<u>2022</u>
\$351,319	\$351,319	\$351,319

**4.A. Exceptional Item Request Schedule**  
 85th Regular Session, Agency Submission, Version 1  
 Automated Budget and Evaluation System of Texas (ABEST)

DATE: 10/10/2016  
 TIME: 4:49:03PM

Agency code: 761

Agency name:  
**Texas A&M International University**

CODE	DESCRIPTION	Excp 2018	Excp 2019
	<b>Item Name:</b> Interdisciplinary Engineering Degree Program <b>Item Priority:</b> 2 <b>IT Component:</b> No <b>Anticipated Out-year Costs:</b> Yes <b>Involve Contracts &gt; \$50,000:</b> No <b>Includes Funding for the Following Strategy or Strategies:</b> 03-05-01 Exceptional Item Request		
<b>OBJECTS OF EXPENSE:</b>			
1001	SALARIES AND WAGES	81,000	81,000
1005	FACULTY SALARIES	1,800,000	1,800,000
2009	OTHER OPERATING EXPENSE	200,000	200,000
5000	CAPITAL EXPENDITURES	919,000	919,000
<b>TOTAL, OBJECT OF EXPENSE</b>		<b>\$3,000,000</b>	<b>\$3,000,000</b>
<b>METHOD OF FINANCING:</b>			
1	General Revenue Fund	3,000,000	3,000,000
<b>TOTAL, METHOD OF FINANCING</b>		<b>\$3,000,000</b>	<b>\$3,000,000</b>
<b>FULL-TIME EQUIVALENT POSITIONS (FTE):</b>		12.00	12.00

**DESCRIPTION / JUSTIFICATION:**

This item would permit Texas A&M International University to expand its existing engineering offerings to include a focus on petroleum engineering and computer science.

- Supports 12 faculty positions and 6 graduate students, along with equipment and infrastructure in specialized laboratories, as the program is built-out over 6 years.
- Leverages partnerships with the oil industry in South Texas and supplements existing donations and pledges by these partners amounting to \$2,000,000.
- Permits an institution serving a 92% Hispanic population to expand offerings in critical STEM fields.
- Expands ability to compete for federal grants in STEM fields and to work with the Department of Homeland Security.
- Creates an opportunity not now available at any of the seven South Texas universities.

**EXTERNAL/INTERNAL FACTORS:**

Major accomplishments to date and expected over the next two years:

- The goals of the Higher Education Coordinating Board's 60x30TX plan will be supported.
- The number of highly competent, well-qualified engineers who will be employed in the oil/energy and computer science and security industries in Texas will be increased.
- The State's underserved population will become productive participants in the Texas economy, while also addressing the shortage of engineers in South Texas.

Year established and funding source prior to receiving special item funding:

**4.A. Exceptional Item Request Schedule**  
 85th Regular Session, Agency Submission, Version 1  
 Automated Budget and Evaluation System of Texas (ABEST)

DATE: 10/10/2016  
 TIME: 4:49:03PM

Agency code: 761

Agency name:  
 Texas A&M International University

CODE	DESCRIPTION	Excp 2018	Excp 2019
------	-------------	-----------	-----------

Special Item does not exist at present.

Formula funding:

Non-general revenue sources of funding:

Consequences of not funding:

•Program implementation would be severely delayed as faculty and equipment purchases would be phased in only as funding becomes available.

**DESCRIPTION OF ANTICIPATED OUT-YEAR COSTS :**

2018-2019 Requested Amount: \$6,000,000, expiring after 3 biennia.

**ESTIMATED ANTICIPATED OUT-YEAR COSTS FOR ITEM:**

	2020	2021	2022
	\$3,000,000	\$3,000,000	\$3,000,000



**4.A. Exceptional Item Request Schedule**  
 85th Regular Session, Agency Submission, Version 1  
 Automated Budget and Evaluation System of Texas (ABEST)

DATE: 10/10/2016  
 TIME: 4:49:03PM

Agency code: 761 Agency name: Texas A&M International University

CODE	DESCRIPTION	Excp 2018	Excp 2019
	<b>Item Name:</b> Si Texas Border Health Initiative <b>Item Priority:</b> 3 <b>IT Component:</b> No <b>Anticipated Out-year Costs:</b> Yes <b>Involve Contracts &gt; \$50,000:</b> No <b>Includes Funding for the Following Strategy or Strategies:</b> 03-05-01 Exceptional Item Request		
<b>OBJECTS OF EXPENSE:</b>			
1005	FACULTY SALARIES	595,000	595,000
2009	OTHER OPERATING EXPENSE	605,000	605,000
<b>TOTAL, OBJECT OF EXPENSE</b>		<b>\$1,200,000</b>	<b>\$1,200,000</b>

<b>METHOD OF FINANCING:</b>			
1	General Revenue Fund	1,200,000	1,200,000
<b>TOTAL, METHOD OF FINANCING</b>		<b>\$1,200,000</b>	<b>\$1,200,000</b>

<b>FULL-TIME EQUIVALENT POSITIONS (FTE):</b>		7.00	7.00
--	--	------	------

**DESCRIPTION / JUSTIFICATION:**

A collaborative effort between Texas A&M International University and nine community healthcare service providers, this item will support a fully coordinated, comprehensive healthcare delivery system in Laredo and the surrounding region.

- Supports 7 nursing, healthcare, and support staff to manage a system of integrated behavioral health to provide a continuum of care for those with obesity, diabetes and depression.
- Magnifies impact of a \$1,200,000 annual grant from Methodist Healthcare Ministries which must be matched dollar for dollar.
- Creates a more informed community regarding healthcare services in the region related to obesity, diabetes and mental health.
- Provides more thorough health screenings with better coordination of care.
- Leads to greater follow-up care through a Prevention Care Model Unit to increase the likelihood that clients attend appointments, take medication, and follow their treatment plan.

**EXTERNAL/INTERNAL FACTORS:**

Major accomplishments to date and expected over the next two years:

- This effort will provide a continuum of care for those with obesity, diabetes, and depression—conditions prevalent in lower income regions of South Texas.
- The initiative seeks to increase the effectiveness of existing services by increasing the level of integration of behavioral health—from prevention to compliance with medical treatment plans—reducing high-cost, reactive care visits to emergency rooms.

**4.A. Exceptional Item Request Schedule**  
 85th Regular Session, Agency Submission, Version 1  
 Automated Budget and Evaluation System of Texas (ABEST)

DATE: 10/10/2016  
 TIME: 4:49:03PM

Agency code: 761

Agency name:  
 Texas A&M International University

<u>CODE</u>	<u>DESCRIPTION</u>	<u>Excp 2018</u>	<u>Excp 2019</u>
-------------	--------------------	------------------	------------------

Year established and funding source prior to receiving special item funding:

Special Item does not exist at present.

Formula funding:

Non-general revenue sources of funding:

Consequences of not funding:

•Any reduction in funding will lead to a scaled back implementation by the University, as the grant requires a dollar for dollar match. This would lessen the effectiveness of the program's impact.

**DESCRIPTION OF ANTICIPATED OUT-YEAR COSTS :**

2018-2019 Requested Amount: \$2,400,000, expiring after 2 biennia.

**ESTIMATED ANTICIPATED OUT-YEAR COSTS FOR ITEM:**

	<u>2020</u>	<u>2021</u>	<u>2022</u>
	\$1,200,000	\$1,200,000	\$1,200,000

Agency code: 761 Agency name: Texas A&M International University

Code	Description	Excp 2018	Excp 2019
<b>Item Name:</b> Restoration of 4% Reduction			
<b>Allocation to Strategy:</b> 3-1-3 Academic and Student Support			
<b>OBJECTS OF EXPENSE:</b>			
1005	FACULTY SALARIES	351,319	351,319
<b>TOTAL, OBJECT OF EXPENSE</b>		<b>\$351,319</b>	<b>\$351,319</b>
<b>METHOD OF FINANCING:</b>			
1	General Revenue Fund	351,319	351,319
<b>TOTAL, METHOD OF FINANCING</b>		<b>\$351,319</b>	<b>\$351,319</b>
<b>FULL-TIME EQUIVALENT POSITIONS (FTE):</b>		5.0	5.0

Agency code: 761 Agency name: Texas A&M International University

Code	Description	Excp 2018	Excp 2019
<b>Item Name:</b> Interdisciplinary Engineering Degree Program			
<b>Allocation to Strategy:</b> 3-5-1 Exceptional Item Request			
<b>OBJECTS OF EXPENSE:</b>			
1001	SALARIES AND WAGES	81,000	81,000
1005	FACULTY SALARIES	1,800,000	1,800,000
2009	OTHER OPERATING EXPENSE	200,000	200,000
5000	CAPITAL EXPENDITURES	919,000	919,000
<b>TOTAL, OBJECT OF EXPENSE</b>		<b>\$3,000,000</b>	<b>\$3,000,000</b>
<b>METHOD OF FINANCING:</b>			
1 General Revenue Fund		3,000,000	3,000,000
<b>TOTAL, METHOD OF FINANCING</b>		<b>\$3,000,000</b>	<b>\$3,000,000</b>
<b>FULL-TIME EQUIVALENT POSITIONS (FTE):</b>		12.0	12.0

Agency code: 761 Agency name: Texas A&M International University

Code	Description	Excp 2018	Excp 2019
<b>Item Name:</b> Si Texas Border Health Initiative			
<b>Allocation to Strategy:</b> 3-5-1 Exceptional Item Request			
<b>OBJECTS OF EXPENSE:</b>			
1005	FACULTY SALARIES	595,000	595,000
2009	OTHER OPERATING EXPENSE	605,000	605,000
<b>TOTAL, OBJECT OF EXPENSE</b>		<b>\$1,200,000</b>	<b>\$1,200,000</b>
<b>METHOD OF FINANCING:</b>			
1	General Revenue Fund	1,200,000	1,200,000
<b>TOTAL, METHOD OF FINANCING</b>		<b>\$1,200,000</b>	<b>\$1,200,000</b>
<b>FULL-TIME EQUIVALENT POSITIONS (FTE):</b>		7.0	7.0

**4.C. Exceptional Items Strategy Request**  
 85th Regular Session, Agency Submission, Version 1  
 Automated Budget and Evaluation System of Texas (ABEST)

**DATE:** 10/10/2016  
**TIME:** 4:49:04PM

Agency Code: **761** Agency name: **Texas A&M International University**

GOAL: 3 Provide Special Item Support

OBJECTIVE: 1 Instructional Support Special Item Support

STRATEGY: 3 Academic and Student Support

Service Categories:

Service: 19 Income: A.2 Age: B.3

<b>CODE DESCRIPTION</b>	<b>Exp 2018</b>	<b>Exp 2019</b>
-------------------------	-----------------	-----------------

**OBJECTS OF EXPENSE:**

1005 FACULTY SALARIES	351,319	351,319
<b>Total, Objects of Expense</b>	<b>\$351,319</b>	<b>\$351,319</b>

**METHOD OF FINANCING:**

1 General Revenue Fund	351,319	351,319
<b>Total, Method of Finance</b>	<b>\$351,319</b>	<b>\$351,319</b>

**FULL-TIME EQUIVALENT POSITIONS (FTE):** 5.0 5.0

**EXCEPTIONAL ITEM(S) INCLUDED IN STRATEGY:**

Restoration of 4% Reduction

**4.C. Exceptional Items Strategy Request**  
 85th Regular Session, Agency Submission, Version 1  
 Automated Budget and Evaluation System of Texas (ABEST)

**DATE: 10/10/2016**  
**TIME: 4:49:04PM**

Agency Code: **761** Agency name: **Texas A&M International University**

GOAL: 3 Provide Special Item Support

OBJECTIVE: 5 Exceptional Item Request

STRATEGY: 1 Exceptional Item Request

Service Categories:

Service: 19 Income: A.2 Age: B.3

<b>CODE DESCRIPTION</b>	<b>Excp 2018</b>	<b>Excp 2019</b>
-------------------------	------------------	------------------

**OBJECTS OF EXPENSE:**

1001 SALARIES AND WAGES	81,000	81,000
1005 FACULTY SALARIES	2,395,000	2,395,000
2009 OTHER OPERATING EXPENSE	805,000	805,000
5000 CAPITAL EXPENDITURES	919,000	919,000
<b>Total, Objects of Expense</b>	<b>\$4,200,000</b>	<b>\$4,200,000</b>

**METHOD OF FINANCING:**

1 General Revenue Fund	4,200,000	4,200,000
<b>Total, Method of Finance</b>	<b>\$4,200,000</b>	<b>\$4,200,000</b>

**FULL-TIME EQUIVALENT POSITIONS (FTE):**

19.0	19.0
------	------

**EXCEPTIONAL ITEM(S) INCLUDED IN STRATEGY:**

Interdisciplinary Engineering Degree Program

Si Texas Border Health Initiative

**6.A. Historically Underutilized Business Supporting Schedule**  
 85th Regular Session, Agency Submission, Version 1  
 Automated Budget and Evaluation System of Texas (ABEST)

Date: **10/10/2016**  
 Time: **4:49:04PM**

Agency Code: **761** Agency: **Texas A&M International University**

COMPARISON TO STATEWIDE HUB PROCUREMENT GOALS

**A. Fiscal Year 2014 - 2015 HUB Expenditure Information**

Statewide HUB Goals	Procurement Category	% Goal	HUB Expenditures FY 2014			Total Expenditures FY 2014		HUB Expenditures FY 2015			Total Expenditures FY 2015
			% Actual	Diff	Actual \$	% Goal	% Actual	Diff	Actual \$		
21.1%	Building Construction	81.2 %	100.0%	18.8%	\$2,063,896	\$2,063,896	82.9 %	88.9%	5.9%	\$197,463	\$222,222
32.9%	Special Trade	52.4 %	17.0%	-35.4%	\$21,735	\$128,104	52.3 %	0.0%	-52.3%	\$0	\$0
23.7%	Professional Services	23.6 %	0.0%	-23.6%	\$0	\$24,923	23.6 %	0.0%	-23.6%	\$0	\$1,224
26.0%	Other Services	25.0 %	36.1%	11.1%	\$1,417,184	\$3,927,049	39.4 %	28.7%	-10.6%	\$941,095	\$3,278,664
21.1%	Commodities	60.1 %	53.1%	-7.0%	\$2,744,174	\$5,167,936	43.5 %	60.3%	16.8%	\$2,105,229	\$3,491,776
	<b>Total Expenditures</b>		<b>55.2%</b>		<b>\$6,246,989</b>	<b>\$11,311,908</b>		<b>46.4%</b>		<b>\$3,243,787</b>	<b>\$6,993,886</b>

**B. Assessment of Fiscal Year 2014 - 2015 Efforts to Meet HUB Procurement Goals**

**Attainment:**

Texas A&M International University exceeded two of five, or 40%, of the applicable statewide HUB procurement goals in FY 2014.

Texas A&M International University exceeded two of five, or 40%, of the applicable statewide HUB procurement goals in FY 2015.

**Applicability:**

Heavy Construction category has not been applicable for fiscal years 2014 or 2015. Texas A&M International University Building Construction projects are typically managed through the Texas A&M University System.

**Factors Affecting Attainment:**

The number and types of projects the University bids per year vary depending on then-current needs and funding availability. Texas A&M International University ensures that HUB vendors are included in all possible solicitations, regardless of dollar value.

**"Good-Faith" Efforts:**

Texas A&M International University (TAMIU) continues to maintain a proactive program to support and promote HUB awareness through contact with University department staff. The Procurement Card training continues to focus in large part on instructing cardholders on the HUB program and on the importance of allowing HUBs to bid/contract for goods and services; and, also on how to effectively search for HUBs on the CMBL. Purchasing staff communicates with departments on the importance of doing business with HUBs as well. TAMIU continually explores ways to increase our level of HUB utilization through peer networking and by working closely with other State agencies to identify new HUB vendors. We actively participate in economic opportunity forums to increase HUB vendor base. The Purchasing Department solicits various minority groups on solicitations and encourages HUB participation in all contracts. Development of the Purchasing website promotes the HUB Program and encourages HUB solicitations in all purchases. TAMIU remains committed to supporting the State HUB program.



**Texas A&M International University**  
**Estimated Funds Outside the Institution's Bill Pattern**  
**2016–17 and 2018–19 Biennia**

	2016-17 Biennium				2018-19 Biennium			
	<u>FY 2016</u> <u>Revenue</u>	<u>FY 2017</u> <u>Revenue</u>	<u>Biennium</u> <u>Total</u>	<u>Percent</u> <u>of Total</u>	<u>FY 2018</u> <u>Revenue</u>	<u>FY 2019</u> <u>Revenue</u>	<u>Biennium</u> <u>Total</u>	<u>Percent</u> <u>of Total</u>
<b>APPROPRIATED SOURCES INSIDE THE BILL PATTERN</b>								
State Appropriations (excluding HEGI & State Paid Fringes)	\$ 31,330,800	\$ 35,674,037	\$ 67,004,837		\$ 31,000,000	\$ 31,000,000	\$ 62,000,000	
Tuition and Fees (net of Discounts and Allowances)	8,524,131	8,589,990	17,114,121		8,625,746	8,632,307	17,258,053	
Endowment and Interest Income	40,474	40,677	81,151		40,880	41,085	81,965	
Sales and Services of Educational Activities (net)	-	-	-		-	-	-	
Sales and Services of Hospitals (net)	-	-	-		-	-	-	
Other Income	125,629	126,257	251,886		127,520	128,795	256,315	
<b>Total</b>	<b>40,021,034</b>	<b>44,430,961</b>	<b>84,451,995</b>	<b>37.9%</b>	<b>39,794,146</b>	<b>39,802,187</b>	<b>79,596,333</b>	<b>35.9%</b>
<b>APPROPRIATED SOURCES OUTSIDE THE BILL PATTERN</b>								
State Appropriations (HEGI & State Paid Fringes)	\$ -	\$ -	\$ -		\$ -	\$ -	\$ -	
Higher Education Assistance Funds	4,473,273	6,709,910	11,183,183		6,709,910	6,709,910	13,419,820	
Available University Fund	10,103,897	10,000,000	20,103,897		10,000,000	10,000,000	20,000,000	
State Grants and Contracts	175,043	88,000	263,043		88,000	88,000	176,000	
<b>Total</b>	<b>14,752,213</b>	<b>16,797,910</b>	<b>31,550,123</b>	<b>14.2%</b>	<b>16,797,910</b>	<b>16,797,910</b>	<b>33,595,820</b>	<b>15.2%</b>
<b>NON-APPROPRIATED SOURCES</b>								
Tuition and Fees (net of Discounts and Allowances)	38,880,608	39,269,414	78,150,022		39,662,108	40,058,729	79,720,837	
Federal Grants and Contracts	8,454,622	8,539,168	16,993,790		8,400,000	8,400,000	16,800,000	
State Grants and Contracts	-	-	-		-	-	-	
Local Government Grants and Contracts	746,237	753,699	1,499,936		746,000	746,000	1,492,000	
Private Gifts and Grants	415,898	420,057	835,955		415,000	415,000	830,000	
Endowment and Interest Income	(14,746)	14,893	147		25,000	25,000	50,000	
Sales and Services of Educational Activities (net)	1,029,253	1,039,546	2,068,799		1,030,000	1,030,000	2,060,000	
Sales and Services of Hospitals (net)	-	-	-		-	-	-	
Professional Fees (net)	865	874	1,739		850	850	1,700	
Auxiliary Enterprises (net)	3,566,332	3,601,995	7,168,327		3,638,014	3,639,000	7,277,014	
Other Income	70,456	71,161	141,617		70,000	70,000	140,000	
<b>Total</b>	<b>53,149,525</b>	<b>53,710,807</b>	<b>106,860,332</b>	<b>47.9%</b>	<b>53,986,972</b>	<b>54,384,579</b>	<b>108,371,551</b>	<b>48.9%</b>
<b>TOTAL SOURCES</b>	<b>\$ 107,922,772</b>	<b>\$ 114,939,678</b>	<b>\$ 222,862,450</b>	<b>100.0%</b>	<b>\$ 110,579,028</b>	<b>\$ 110,984,676</b>	<b>\$ 221,563,704</b>	<b>100.0%</b>

**6.I. Percent Biennial Base Reduction Options**

**10 % REDUCTION**

85th Regular Session, Agency Submission, Version 1  
Automated Budget and Evaluation System of Texas (ABEST)

Date: 10/10/2016

Time: 4:49:04PM

Agency code: 761 Agency name: Texas A&M International University

Item Priority and Name/ Method of Financing	REVENUE LOSS			REDUCTION AMOUNT			TARGET
	2018	2019	Biennial Total	2018	2019	Biennial Total	
<b>1 Instructional Flexible Hiring Freeze</b>							
<b>Category:</b> Programs - Service Reductions (FTEs-Hiring Freeze)							
<b>Item Comment:</b> Texas A&M International University will analyze all vacant positions and those that become vacant through resignations, terminations, or retirements to evaluate the necessity and/or how long the hiring of the position can be delayed. Faculty positions will be further evaluated for the possibility of replacing full-time faculty with lower cost adjuncts.							
Strategy: 3-4-1 Institutional Enhancement							
<u>General Revenue Funds</u>							
1 General Revenue Fund	\$587,500	\$587,500	\$1,175,000	\$587,500	\$587,500	\$1,175,000	
<b>General Revenue Funds Total</b>	<b>\$587,500</b>	<b>\$587,500</b>	<b>\$1,175,000</b>	<b>\$587,500</b>	<b>\$587,500</b>	<b>\$1,175,000</b>	
<b>Item Total</b>	<b>\$587,500</b>	<b>\$587,500</b>	<b>\$1,175,000</b>	<b>\$587,500</b>	<b>\$587,500</b>	<b>\$1,175,000</b>	
<b>FTE Reductions (From FY 2018 and FY 2019 Base Request)</b>				<b>9.0</b>	<b>9.0</b>		
<b>2 Non-instructional Flexible Hiring Freeze</b>							
<b>Category:</b> Administrative - FTEs / Hiring and Salary Freeze							
<b>Item Comment:</b> Texas A&M International University will analyze all vacant positions and those that become vacant through resignations, terminations, or retirements to evaluate the necessity and/or how long the hiring of the position can be delayed.							
Strategy: 3-4-3 Outreach and Enrollment							
<u>General Revenue Funds</u>							
1 General Revenue Fund	\$212,500	\$212,500	\$425,000	\$212,500	\$212,500	\$425,000	
<b>General Revenue Funds Total</b>	<b>\$212,500</b>	<b>\$212,500</b>	<b>\$425,000</b>	<b>\$212,500</b>	<b>\$212,500</b>	<b>\$425,000</b>	
<b>Item Total</b>	<b>\$212,500</b>	<b>\$212,500</b>	<b>\$425,000</b>	<b>\$212,500</b>	<b>\$212,500</b>	<b>\$425,000</b>	
<b>FTE Reductions (From FY 2018 and FY 2019 Base Request)</b>				<b>6.0</b>	<b>6.0</b>		

**6.I. Percent Biennial Base Reduction Options**

**10 % REDUCTION**

85th Regular Session, Agency Submission, Version 1  
Automated Budget and Evaluation System of Texas (ABEST)

Date: 10/10/2016  
Time: 4:49:04PM

Agency code: 761 Agency name: Texas A&M International University

Item Priority and Name/ Method of Financing	REVENUE LOSS			REDUCTION AMOUNT			TARGET
	2018	2019	Biennial Total	2018	2019	Biennial Total	
<b>3 Delayed Capital Equipment Purchases</b>							
<b>Category:</b> Programs - Delayed or Deferred Capital Projects							
<b>Item Comment:</b> Texas A&M International University will reduce capital equipment purchases in both, instructional and administrative, areas.							
Strategy: 1-1-1 Operations Support							
<u>General Revenue Funds</u>							
1 General Revenue Fund	\$43,165	\$43,166	\$86,331	\$43,165	\$43,166	\$86,331	
<b>General Revenue Funds Total</b>	<b>\$43,165</b>	<b>\$43,166</b>	<b>\$86,331</b>	<b>\$43,165</b>	<b>\$43,166</b>	<b>\$86,331</b>	
<b>Item Total</b>	<b>\$43,165</b>	<b>\$43,166</b>	<b>\$86,331</b>	<b>\$43,165</b>	<b>\$43,166</b>	<b>\$86,331</b>	
<b>FTE Reductions (From FY 2018 and FY 2019 Base Request)</b>							
<b>AGENCY TOTALS</b>							
<b>General Revenue Total</b>	<b>\$843,165</b>	<b>\$843,166</b>	<b>\$1,686,331</b>	<b>\$843,165</b>	<b>\$843,166</b>	<b>\$1,686,331</b>	<b>\$1,686,331</b>
<b>Agency Grand Total</b>	<b>\$843,165</b>	<b>\$843,166</b>	<b>\$1,686,331</b>	<b>\$843,165</b>	<b>\$843,166</b>	<b>\$1,686,331</b>	<b>\$1,686,331</b>
<b>Difference, Options Total Less Target</b>							
<b>Agency FTE Reductions (From FY 2018 and FY 2019 Base Request)</b>				<b>15.0</b>	<b>15.0</b>		

85th Regular Session, Agency Submission, Version 1  
Automated Budget and Evaluation System of Texas (ABEST)

<b>761 Texas A&amp;M International University</b>					
	<b>Act 2015</b>	<b>Act 2016</b>	<b>Bud 2017</b>	<b>Est 2018</b>	<b>Est 2019</b>
<b>Gross Tuition</b>					
Gross Resident Tuition	8,190,525	8,592,656	8,685,803	8,695,020	8,703,616
Gross Non-Resident Tuition	3,932,273	4,289,758	4,311,207	4,315,518	4,319,833
<b>Gross Tuition</b>	<b>12,122,798</b>	<b>12,882,414</b>	<b>12,997,010</b>	<b>13,010,538</b>	<b>13,023,449</b>
Less: Resident Waivers and Exemptions (excludes Hazlewood)	(32,679)	(38,913)	(39,302)	(39,341)	(39,381)
Less: Non-Resident Waivers and Exemptions	(3,098,170)	(3,117,424)	(3,119,294)	(3,121,166)	(3,123,039)
Less: Hazlewood Exemptions	(188,760)	(213,509)	(215,644)	(215,860)	(216,076)
Less: Board Authorized Tuition Increases (TX. Educ. Code Ann. Sec. 54.008)	(379,368)	(378,659)	(379,829)	(380,000)	(380,000)
Less: Tuition increases charged to doctoral students with hours in excess of 100 (TX. Educ. Code Ann. Sec. 54.012)	0	0	0	0	0
Less: Tuition increases charged to undergraduate students with excessive hours above degree requirements. (TX. Educ. Code Ann. Sec. 61.0595)	0	0	0	0	0
Less: Tuition rebates for certain undergraduates (TX. Educ. Code Ann. Sec. 54.0065)	0	0	0	0	0
Plus: Tuition waived for Students 55 Years or Older (TX. Educ. Code Ann. Sec. 54.013)	0	0	0	0	0
Less: Tuition for repeated or excessive hours (TX. Educ. Code Ann. Sec. 54.014)	0	(98,978)	(99,000)	(99,500)	(99,500)
Plus: Tuition waived for Texas Grant Recipients (TX. Educ. Code Ann. Sec. 56.307)	0	0	0	0	0
<b>Subtotal</b>	<b>8,423,821</b>	<b>9,034,931</b>	<b>9,143,941</b>	<b>9,154,671</b>	<b>9,165,453</b>
Less: Transfer of funds for Texas Public Education Grants Program (Tex. Educ. Code Ann. Sec. 56c) and for Emergency Loans (Tex. Educ. Code Ann. Sec. 56d)	(1,172,705)	(1,219,232)	(1,211,772)	(1,223,890)	(1,236,129)
Less: Transfer of Funds (2%) for Physician/Dental Loans (Medical Schools)	0	0	0	0	0
Less: Statutory Tuition (Tx. Educ. Code Ann. Sec. 54.051) Set Aside for Doctoral Incentive Loan Repayment Program (Tx. Educ. Code Ann. Sec. 56.095)	0	0	0	0	0
Less: Other Authorized Deduction					
<b>Net Tuition</b>	<b>7,251,116</b>	<b>7,815,699</b>	<b>7,932,169</b>	<b>7,930,781</b>	<b>7,929,324</b>

85th Regular Session, Agency Submission, Version 1  
Automated Budget and Evaluation System of Texas (ABEST)

<b>761 Texas A&amp;M International University</b>					
	<b>Act 2015</b>	<b>Act 2016</b>	<b>Bud 2017</b>	<b>Est 2018</b>	<b>Est 2019</b>
Student Teaching Fees	0	0	0	0	0
Special Course Fees	0	0	0	0	0
Laboratory Fees	133,602	159,424	160,221	161,022	161,827
<b>Subtotal, Tuition and Fees (Formula Amounts for Health-Related Institutions)</b>	<b>7,384,718</b>	<b>7,975,123</b>	<b>8,092,390</b>	<b>8,091,803</b>	<b>8,091,151</b>
<b>OTHER INCOME</b>					
<b>Interest on General Funds:</b>					
Local Funds in State Treasury	40,273	78,767	79,161	79,557	79,954
Funds in Local Depositories, e.g., local amounts	0	0	0	0	0
Other Income (Itemize)					
Late Registration Fees	94,457	100,000	100,000	105,000	105,000
Administrative & Instructional Sales	30,547	39,834	40,533	36,939	38,358
<b>Subtotal, Other Income</b>	<b>165,277</b>	<b>218,601</b>	<b>219,694</b>	<b>221,496</b>	<b>223,312</b>
<b>Subtotal, Other Educational and General Income</b>	<b>7,549,995</b>	<b>8,193,724</b>	<b>8,312,084</b>	<b>8,313,299</b>	<b>8,314,463</b>
Less: O.A.S.I. Applicable to Educational and General Local Funds Payrolls	(457,642)	(462,233)	(464,544)	(466,867)	(469,201)
Less: Teachers Retirement System and ORP Proportionality for Educational and General Funds	(424,155)	(437,694)	(437,913)	(438,132)	(438,351)
Less: Staff Group Insurance Premiums	(797,573)	(870,770)	(1,056,658)	(1,056,658)	(1,056,658)
<b>Total, Other Educational and General Income (Formula Amounts for General Academic Institutions)</b>	<b>5,870,625</b>	<b>6,423,027</b>	<b>6,352,969</b>	<b>6,351,642</b>	<b>6,350,253</b>
<b>Reconciliation to Summary of Request for FY 2015-2017:</b>					
Plus: Transfer of Funds for Texas Public Education Grants Program and Physician Loans	1,172,705	1,219,232	1,211,772	1,223,890	1,236,129
Plus: Transfer of Funds 2% for Physician/Dental Loans (Medical Schools)	0	0	0	0	0
Plus: Transfer of Funds for Cancellation of Student Loans of Physicians	0	0	0	0	0
Plus: Organized Activities	0	0	0	0	0
Plus: Staff Group Insurance Premiums	797,573	870,770	1,056,658	1,056,658	1,056,658
Plus: Board-authorized Tuition Income	379,368	378,659	379,829	380,000	380,000

<b>761 Texas A&amp;M International University</b>					
	<b>Act 2015</b>	<b>Act 2016</b>	<b>Bud 2017</b>	<b>Est 2018</b>	<b>Est 2019</b>
Plus: Tuition Increases Charged to Doctoral Students with Hours in Excess of 100	0	0	0	0	0
Plus: Tuition Increases Charged to Undergraduate Students with Excessive Hours above Degree Requirements (TX. Educ. Code Ann. Sec. 61.0595)	0	0	0	0	0
Plus: Tuition rebates for certain undergraduates (TX Educ.Code Ann. Sec. 54.0065)	0	0	0	0	0
Plus: Tuition for repeated or excessive hours (TX. Educ. Code Ann. Sec. 54.014)	0	98,978	99,000	99,500	99,500
Less: Tuition Waived for Students 55 Years or Older	0	0	0	0	0
Less: Tuition Waived for Texas Grant Recipients	0	0	0	0	0
<b>Total, Other Educational and General Income Reported on Summary of Request</b>	<b>8,220,271</b>	<b>8,990,666</b>	<b>9,100,228</b>	<b>9,111,690</b>	<b>9,122,540</b>

Schedule 2: Selected Educational, General and Other Funds

10/10/2016 4:49:11PM

85th Regular Session, Agency Submission, Version 1  
Automated Budget and Evaluation System of Texas (ABEST)

761 Texas A&M International University

	Act 2015	Act 2016	Bud 2017	Est 2018	Est 2019
General Revenue Transfers					
Transfer from Coordinating Board for Advanced Research Program	0	0	0	0	0
Transfer from Coordinating Board for Texas College Work Study Program (2015, 2016, 2017)	51,522	51,557	51,500	51,600	51,600
Transfer from Coordinating Board for Professional Nursing Shortage Reduction Program	270,000	300,000	200,000	200,000	200,000
Transfer of GR Group Insurance Premium from Comptroller (UT and TAMU Components only)	2,406,137	2,851,820	2,773,157	2,770,000	2,770,000
Less: Transfer to Other Institutions	0	0	0	0	0
Less: Transfer to Department of Health, Disproportionate Share - State-Owned Hospitals (2015, 2016, 2017)	0	0	0	0	0
Other (Itemize)					
Other: Fifth Year Accounting Scholarship	7,815	12,000	10,000	10,000	10,000
Texas Grants	7,908,333	8,741,702	8,700,000	8,700,000	8,700,000
B-on-Time Program	0	0	0	0	0
Less: Transfer to System Administration	0	0	0	0	0
<b>Subtotal, General Revenue Transfers</b>	<b>10,643,807</b>	<b>11,957,079</b>	<b>11,734,657</b>	<b>11,731,600</b>	<b>11,731,600</b>
General Revenue HEF for Operating Expenses	3,796,436	4,473,273	6,709,910	6,709,910	6,709,910
Transfer from Available University Funds (UT, A&M and Prairie View A&M Only)	0	0	0	0	0
Other Additions (Itemize)					
Increase Capital Projects - Educational and General Funds	0	0	0	0	0
Transfer from Department of Health, Disproportionate Share - State-owned Hospitals (2015, 2016, 2017)	0	0	0	0	0
Transfers from Other Funds, e.g., Designated funds transferred for educational and general activities (Itemize)	0	0	0	0	0
Transfer from Coordinating Board for Incentive Funding	0	0	0	0	0
Other (Itemize)					
<b>Gross Designated Tuition (Sec. 54.0513)</b>	<b>17,199,009</b>	<b>18,050,272</b>	<b>18,140,523</b>	<b>18,231,226</b>	<b>18,322,382</b>
<b>Indirect Cost Recovery (Sec. 145.001(d))</b>	<b>708,580</b>	<b>695,984</b>	<b>702,944</b>	<b>709,973</b>	<b>717,073</b>
<b>Correctional Managed Care Contracts</b>	<b>0</b>	<b>0</b>	<b>0</b>	<b>0</b>	<b>0</b>

**Schedule 3B: Staff Group Insurance Data Elements (UT/A&M)**  
 85th Regular Session, Agency Submission, Version 1  
 Automated Budget and Evaluation System of Texas (ABEST)

10/10/2016 4:49:11PM

**761 Texas A&M International University**

	<b>E&amp;G Enrollment</b>	<b>GR Enrollment</b>	<b>GR-D/OEGI Enrollment</b>	<b>Total E&amp;G (Check)</b>	<b>Local Non-E&amp;G</b>
<b>GR &amp; GR-D Percentages</b>					
GR %		76.60%			
GR-D/Other %		23.40%			
<b>Total Percentage</b>		100.00%			
<b>FULL TIME ACTIVES</b>					
1a Employee Only	208	159	49	208	159
2a Employee and Children	57	44	13	57	38
3a Employee and Spouse	35	27	8	35	10
4a Employee and Family	75	57	18	75	35
5a Eligible, Opt Out	18	14	4	18	18
6a Eligible, Not Enrolled	8	6	2	8	9
<b>Total for This Section</b>	<b>401</b>	<b>307</b>	<b>94</b>	<b>401</b>	<b>269</b>
<b>PART TIME ACTIVES</b>					
1b Employee Only	10	8	2	10	35
2b Employee and Children	1	1	0	1	1
3b Employee and Spouse	3	2	1	3	3
4b Employee and Family	0	0	0	0	1
5b Eligible, Opt Out	10	8	2	10	1
6b Eligible, Not Enrolled	13	10	3	13	15
<b>Total for This Section</b>	<b>37</b>	<b>29</b>	<b>8</b>	<b>37</b>	<b>56</b>
<b>Total Active Enrollment</b>	<b>438</b>	<b>336</b>	<b>102</b>	<b>438</b>	<b>325</b>



**761 Texas A&M International University**

	<b>E&amp;G Enrollment</b>	<b>GR Enrollment</b>	<b>GR-D/OEGI Enrollment</b>	<b>Total E&amp;G (Check)</b>	<b>Local Non-E&amp;G</b>
<b>FULL TIME RETIREES by ERS</b>					
1c Employee Only	46	35	11	46	5
2c Employee and Children	2	2	0	2	0
3c Employee and Spouse	32	25	7	32	4
4c Employee and Family	4	3	1	4	0
5c Eligible, Opt Out	0	0	0	0	0
6c Eligible, Not Enrolled	0	0	0	0	0
<b>Total for This Section</b>	<b>84</b>	<b>65</b>	<b>19</b>	<b>84</b>	<b>9</b>
<b>PART TIME RETIREES by ERS</b>					
1d Employee Only	0	0	0	0	0
2d Employee and Children	0	0	0	0	0
3d Employee and Spouse	0	0	0	0	0
4d Employee and Family	0	0	0	0	0
5d Eligible, Opt Out	0	0	0	0	0
6d Eligible, Not Enrolled	0	0	0	0	0
<b>Total for This Section</b>	<b>0</b>	<b>0</b>	<b>0</b>	<b>0</b>	<b>0</b>
<b>Total Retirees Enrollment</b>	<b>84</b>	<b>65</b>	<b>19</b>	<b>84</b>	<b>9</b>
<b>TOTAL FULL TIME ENROLLMENT</b>					
1e Employee Only	254	194	60	254	164
2e Employee and Children	59	46	13	59	38
3e Employee and Spouse	67	52	15	67	14
4e Employee and Family	79	60	19	79	35
5e Eligible, Opt Out	18	14	4	18	18
6e Eligible, Not Enrolled	8	6	2	8	9
<b>Total for This Section</b>	<b>485</b>	<b>372</b>	<b>113</b>	<b>485</b>	<b>278</b>

761 Texas A&M International University

	<b>E&amp;G Enrollment</b>	<b>GR Enrollment</b>	<b>GR-D/OEGI Enrollment</b>	<b>Total E&amp;G (Check)</b>	<b>Local Non-E&amp;G</b>
<b>TOTAL ENROLLMENT</b>					
1f Employee Only	264	202	62	264	199
2f Employee and Children	60	47	13	60	39
3f Employee and Spouse	70	54	16	70	17
4f Employee and Family	79	60	19	79	36
5f Eligible, Opt Out	28	22	6	28	19
6f Eligible, Not Enrolled	21	16	5	21	24
<b>Total for This Section</b>	<b>522</b>	<b>401</b>	<b>121</b>	<b>522</b>	<b>334</b>

**Schedule 4: Computation of OASI**  
85th Regular Session, Agency Submission, Version 1  
Automated Budget and Evaluation System of Texas (ABEST)

**Agency 761 Texas A&M International University**

Proportionality Percentage Based on Comptroller Accounting Policy Statement #011, Exhibit 2	2015		2016		2017		2018		2019	
	<u>% to Total</u>	<u>Allocation of OASI</u>	<u>% to Total</u>	<u>Allocation of OASI</u>	<u>% to Total</u>	<u>Allocation of OASI</u>	<u>% to Total</u>	<u>Allocation of OASI</u>	<u>% to Total</u>	<u>Allocation of OASI</u>
General Revenue (% to Total)	75.1047	\$1,380,624	76.6085	\$1,513,839	76.6085	\$1,521,409	76.6085	\$1,529,016	76.6085	\$1,536,661
Other Educational and General Funds (% to Total)	24.8953	\$457,642	23.3915	\$462,233	23.3915	\$464,544	23.3915	\$466,867	23.3915	\$469,201
Health-Related Institutions Patient Income (% to Total)	0.0000	\$0	0.0000	\$0	0.0000	\$0	0.0000	\$0	0.0000	\$0
<b>Grand Total, OASI (100%)</b>	100.0000	<b>\$1,838,266</b>	100.0000	<b>\$1,976,072</b>	100.0000	<b>\$1,985,953</b>	100.0000	<b>\$1,995,883</b>	100.0000	<b>\$2,005,862</b>

**Schedule 5: Calculation of Retirement Proportionality and ORP Differential**

10/10/2016 4:49:12PM

85th Regular Session, Agency Submission, Version 1

Automated Budget and Evaluation System of Texas (ABEST)

**761 Texas A&M International University**

<b>Description</b>	<b>Act 2015</b>	<b>Act 2016</b>	<b>Bud 2017</b>	<b>Est 2018</b>	<b>Est 2019</b>
<b>Proportionality Amounts</b>					
Gross Educational and General Payroll - Subject To TRS Retirement	15,426,152	17,553,857	17,562,634	17,571,415	17,580,201
Employer Contribution to TRS Retirement Programs	1,048,969	1,193,662	1,194,259	1,194,856	1,195,454
Gross Educational and General Payroll - Subject To ORP Retirement	9,229,135	9,652,373	9,657,199	9,662,027	9,666,858
Employer Contribution to ORP Retirement Programs	654,786	677,505	677,844	678,183	678,522
<b>Proportionality Percentage</b>					
General Revenue	75.1047 %	76.6085 %	76.6085 %	76.6085 %	76.6085 %
Other Educational and General Income	24.8953 %	23.3915 %	23.3915 %	23.3915 %	23.3915 %
Health-related Institutions Patient Income	0.0000 %	0.0000 %	0.0000 %	0.0000 %	0.0000 %
<b>Proportional Contribution</b>					
Other Educational and General Proportional Contribution (Other E&G percentage x Total Employer Contribution to Retirement Programs)	424,155	437,694	437,913	438,132	438,351
HRI Patient Income Proportional Contribution (HRI Patient Income percentage x Total Employer Contribution To Retirement Programs)	0	0	0	0	0
<b>Differential</b>					
Differential Percentage	1.3100 %	1.3100 %	1.3100 %	1.3100 %	1.3100 %
Gross Payroll Subject to Differential - Optional Retirement Program	9,229,135	9,652,373	9,657,199	9,662,027	9,666,858
<b>Total Differential</b>	<b>120,902</b>	<b>126,446</b>	<b>126,509</b>	<b>126,573</b>	<b>126,636</b>

**Schedule 6: Constitutional Capital Funding**  
 85th Regular Session, Agency Submission, Version 1  
 Automated Budget and Evaluation System of Texas (ABEST)

10/10/2016 4:49:13PM

<b>761 Texas A&amp;M International University</b>					
<b>Activity</b>	<b>Act 2015</b>	<b>Act 2016</b>	<b>Bud 2017</b>	<b>Est 2018</b>	<b>Est 2019</b>
A. PUF Bond Proceeds Allocation	0	0	0	0	0
Project Allocation					
Library Acquisitions	0	0	0	0	0
Construction, Repairs and Renovations	0	0	0	0	0
Furnishings & Equipment	0	0	0	0	0
Computer Equipment & Infrastructure	0	0	0	0	0
Reserve for Future Consideration	0	0	0	0	0
Other (Itemize)					
B. HEF General Revenue Allocation	3,796,436	4,473,273	6,709,910	6,709,910	6,709,910
Project Allocation					
Library Acquisitions	81,176	327,949	350,000	350,000	350,000
Construction, Repairs and Renovations	856,849	872,211	850,000	850,000	850,000
Furnishings & Equipment	176,997	546,326	525,000	525,000	525,000
Computer Equipment & Infrastructure	769,476	922,825	900,000	900,000	900,000
Reserve for Future Consideration	1,486,688	1,803,962	4,084,910	4,084,910	4,084,910
HEF for Debt Service	425,250	0	0	0	0
Other (Itemize)					

**Schedule 7: Personnel**  
85th Regular Session, Agency Submission, Version 1  
Automated Budget and Evaluation System of Texas (ABEST)

Date: 10/10/2016  
Time: 4:49:13PM

Agency code: **761** Agency name: **Texas A&M International University**

	Actual 2015	Actual 2016	Budgeted 2017	Estimated 2018	Estimated 2019
<b>Part A.</b>					
<b>FTE Postions</b>					
<b>Directly Appropriated Funds (Bill Pattern)</b>					
Educational and General Funds Faculty Employees	197.0	236.5	240.0	235.0	235.0
Educational and General Funds Non-Faculty Employees	223.7	283.5	280.0	280.0	280.0
<b>Subtotal, Directly Appropriated Funds</b>	<b>420.7</b>	<b>520.0</b>	<b>520.0</b>	<b>515.0</b>	<b>515.0</b>
Non Appropriated Funds Employees	431.4	432.0	435.0	438.0	438.0
<b>Subtotal, Other Funds &amp; Non-Appropriated</b>	<b>431.4</b>	<b>432.0</b>	<b>435.0</b>	<b>438.0</b>	<b>438.0</b>
<b>GRAND TOTAL</b>	<b>852.1</b>	<b>952.0</b>	<b>955.0</b>	<b>953.0</b>	<b>953.0</b>
<b>Part B.</b>					
<b>Personnel Headcount</b>					
<b>Directly Appropriated Funds (Bill Pattern)</b>					
Educational and General Funds Faculty Employees	216.0	230.0	240.0	235.0	235.0
Educational and General Funds Non-Faculty Employees	278.0	290.0	280.0	280.0	280.0
<b>Subtotal, Directly Appropriated Funds</b>	<b>494.0</b>	<b>520.0</b>	<b>520.0</b>	<b>515.0</b>	<b>515.0</b>
Non Appropriated Funds Employees	440.0	440.0	442.0	445.0	445.0
<b>Subtotal, Non-Appropriated</b>	<b>440.0</b>	<b>440.0</b>	<b>442.0</b>	<b>445.0</b>	<b>445.0</b>
<b>GRAND TOTAL</b>	<b>934.0</b>	<b>960.0</b>	<b>962.0</b>	<b>960.0</b>	<b>960.0</b>

**Schedule 7: Personnel**  
 85th Regular Session, Agency Submission, Version 1  
 Automated Budget and Evaluation System of Texas (ABEST)

Date: 10/10/2016  
 Time: 4:49:13PM

Agency code: **761** Agency name: **Texas A&M International University**

	<b>Actual</b> 2015	<b>Actual</b> 2016	<b>Budgeted</b> 2017	<b>Estimated</b> 2018	<b>Estimated</b> 2019
<b>PART C.</b>					
<b>Salaries</b>					
<b>Directly Appropriated Funds (Bill Pattern)</b>					
Educational and General Funds Faculty Employees	\$16,253,998	\$16,315,838	\$16,478,996	\$16,643,786	\$16,810,224
Educational and General Funds Non-Faculty Employees	\$9,496,302	\$10,182,112	\$10,283,933	\$10,386,773	\$10,490,640
<b>Subtotal, Directly Appropriated Funds</b>	<b>\$25,750,300</b>	<b>\$26,497,950</b>	<b>\$26,762,929</b>	<b>\$27,030,559</b>	<b>\$27,300,864</b>
Non Appropriated Funds Employees	\$16,975,000	\$17,059,875	\$17,145,174	\$17,145,174	\$17,317,054
<b>Subtotal, Non-Appropriated</b>	<b>\$16,975,000</b>	<b>\$17,059,875</b>	<b>\$17,145,174</b>	<b>\$17,145,174</b>	<b>\$17,317,054</b>
<b>GRAND TOTAL</b>	<b>\$42,725,300</b>	<b>\$43,557,825</b>	<b>\$43,908,103</b>	<b>\$44,175,733</b>	<b>\$44,617,918</b>

**Schedule 8D: Tuition Revenue Bonds Request by Project**

Agency Code: **761**

Agency Name: **Texas A&M International University**

Project Name	Authorization Year	Estimated Final Payment Date	Requested Amount 2018	Requested Amount 2019
Science Building	2001	5/15/2022	\$ 1,603,337.00	\$ 1,599,412.00
Kinesiology Facilities	2003	5/15/2025	\$ 727,713.00	\$ 727,588.00
Completion of Fine Arts Theater	2006	5/15/2029	\$ 255,695.00	\$ 255,480.00
Student Success Center	2006	5/15/2029	\$ 1,571,980.00	\$ 1,569,921.00
Loop Road and Chill Water Loop Project	2006	5/15/2029	\$ 71,975.00	\$ 74,975.00
Library Renovation through the Addition of Instructional and Support	2016	5/15/2040	\$ 4,429,391.00	\$ 4,429,391.00
			<u>\$ 8,660,091.00</u>	<u>\$ 8,656,767.00</u>



---

**761 Texas A&M International University**

---

**Special Item:**     1           **Institutional Enhancement**

**(1) Year Special Item:**           2000  
Original Appropriations:   \$5,872,337

**(2) Mission of Special Item:**

The 74th Texas Legislature authorized an expansion of the University to 4-year status in fall, 1995. The South Texas Border Initiative supported the hiring of faculty and staff to handle the rapid growth in enrollment and the expansion of academic programs. Institutional Enhancement currently funds 24% of the University's total appropriation and 40% of E&G faculty. It represents a significant portion of base funding.

**(3) (a) Major Accomplishments to Date:**

Funding 91 FTE faculty.

**(3) (b) Major Accomplishments Expected During the Next 2 Years:**

As mentioned above, Institutional Enhancement represents 24% of the University's total appropriations, funds 40% of E&G faculty, and is a significant portion of the University's base funding. Over the next two years, this special item funding will be used to retain and recruit faculty members and to provide opportunities for them to engage in sponsored research, which will increase revenues to the State of Texas. In addition, the funding of these faculty positions helps decrease our reliance on adjunct faculty, which is critical for maintaining and improving persistence rates for first-and second-year students.

**(4) Funding Source Prior to Receiving Special Item Funding:**

The Institutional Enhancement special item was the result of the consolidation of several special items by the 74th Legislature, plus the addition of an initial \$1M per year for academic enhancement purposes.

**(5) Formula Funding:**

N

**(6) Startup Funding:**

N

**(7) Transition Funding:**

N

**(8) Non-general Revenue Sources of Funding:**

None

**(9) Consequences of Not Funding:**

---

**761 Texas A&M International University**

---

Institutional enhancement represents base funding for this institution. It is critical that this base funding continue to ensure both the quality and survival of programs. Without this base funding source, access to programs, such as nursing, engineering and teacher preparation, would have to be reduced, which the State has deemed a high priority.

---

---

**761 Texas A&M International University**

---

**Special Item:**     2       **Academic and Student Support**

**(1) Year Special Item:**             2014  
Original Appropriations:   \$1,841,015

**(2) Mission of Special Item:**

Academic and Student Support provides resources to recruit and retain faculty to provide students with a quality education, along with student scholarships and assistantships.

**(3) (a) Major Accomplishments to Date:**

Funding 21 FTE faculty.

**(3) (b) Major Accomplishments Expected During the Next 2 Years:**

Academic and Student Support represents 7% of the University's total appropriations and funds 9% of E&G faculty. It is base funding for the University. Over the next two years, this special item funding will be used to retain and recruit faculty members and to provide opportunities for them to engage in sponsored research, which will increase revenues to the State of Texas. In addition, the funding of these faculty positions helps decrease our reliance on adjunct faculty, which is critical for maintaining and improving persistence rates for first-and second-year students.

**(4) Funding Source Prior to Receiving Special Item Funding:**

The Academic and Student Support special item was created by a budget structure change of two special items approved in the 83rd Legislative Session.

**(5) Formula Funding:**

N

**(6) Startup Funding:**

N

**(7) Transition Funding:**

N

**(8) Non-general Revenue Sources of Funding:**

None

**(9) Consequences of Not Funding:**

Academic and Student Support represents base funding for this institution. It is critical that this base funding continue to ensure both the quality and survival of programs. Without this base funding source, access to programs, such as nursing, engineering and teacher preparation, would have to be reduced, which the State has deemed a high priority.

**Schedule 9: Special Item Information**  
85th Regular Session, Agency Submission, Version 1  
Automated Budget and Evaluation System of Texas (ABEST)

---

**761 Texas A&M International University**

---

---

**761 Texas A&M International University**

---

**Special Item:     3           Outreach & Enrollment**

**(1) Year Special Item:**           2012  
Original Appropriations:   \$1,000,000

**(2) Mission of Special Item:**

The University prepares students for success through intensive outreach to local and regional schools, establishing one-on-one relationships to guide high school students through the admissions and financial aid processes. Upon entering the University, a comprehensive program of orientation, advisement, and academic support ensures retention and timely graduation. This funding enables the University to provide non-traditional students in an underserved region with the environment and tools necessary for success and makes “Closing the Gaps” possible. The resources provided by this funding enable the State’s underserved population to become productive participants in the Texas economy.

**(3) (a) Major Accomplishments to Date:**

- Funds 2% E&G faculty
- Increased freshmen applications by 87% (from fall 2009 to fall 2015).
- Increased first time freshmen enrollment by 23% (from fall 2009 to fall 2015).
- Increased the percentage of enrolled students ranked in the top 25% to 48% (fall 2015).
- Increased first time freshmen's retention rate to 76.5% (fall 2014 returning fall 2015).
- Increased first time freshmen's cumulative first year GPA from 2.52 to 2.7 (from fall 2010 to fall 2015).
- Reduced second term suspension rates for freshmen from 11.2% to 7% (from fall 2009 to fall 2014).
- Expanded Advising and Mentoring Center services for first- and second-year students up to 60 semester credit hours staffed by full-time professional Academic Advisors and part-time Student Mentors.
- Funded a second retention specialist for freshmen and sophomore students to support early alert referrals, provisionally admitted students, developmental education students, and students placed on probation.
- Increased the number of tutoring services and supplemental instruction sessions.
- Increased offering summer academic boot camps and expanded workshop and bridging session offerings to enhance college readiness.
- Increased the number of orientation sessions for new and transfer students, as well as parent orientation programs. All student orientations are now mandatory.
- Expanded outreach and access through Enrollment Specialists in the Laredo, San Antonio, Rio Grande Valley and Houston regions.

**(3) (b) Major Accomplishments Expected During the Next 2 Years:**

- Focus the University offerings and support services to increase overall student engagement and retention targeting an 80% retention rate.
- Increase semester credit hour enrollment through personalized academic advising.
- Expand supplemental instruction for challenging core courses.
- Expansion of summer academic boot camp, workshops and bridge program offerings in mathematics, reading, and writing.
- Review and retarget the HB 5 College Prep Course content in mathematics and language arts with local and area high schools and community college.
- Expanded Texas Success Initiative Assessment (TSIA) through B-Virtual testing.
- Continue to diversify Freshman Seminar course options to personalize the needs of students.
- Institutionalize Signature Courses for all freshmen students.

---

**761 Texas A&M International University**

---

**(4) Funding Source Prior to Receiving Special Item Funding:**

There was no funding source prior to receiving this.

**(5) Formula Funding:**

N

**(6) Startup Funding:**

N

**(7) Transition Funding:**

N

**(8) Non-general Revenue Sources of Funding:**

Flat Advising fee charged to students.

**(9) Consequences of Not Funding:**

Without funding, these effective programs, as currently delivered, would be eliminated. Reduction of funding would also hinder TAMIU's ability to support non-traditional students and obliterate any hope for students whose personal environment is incapable of supporting the academic rigor required of a university experience. The elimination of funding would prevent the University from fulfilling its legislative mandate of providing a higher education to an underserved population and "Closing the Gaps".

---

---

**761 Texas A&M International University**

---

**Special Item:**     4       **Institute for International Trade**

**(1) Year Special Item:**             1979  
Original Appropriations:   \$69,945

**(2) Mission of Special Item:**

The Institute supports the international mission of the University by collecting and publishing economic indicators for the Texas-Mexico border region, promoting research on international trade and related issues, and encouraging scholarly productivity of its faculty and students. The Institute was originally a part of the Graduate School of International Trade. When the College of Business Administration was established, the Institute served as an internal think tank for the University, and the border region. The Institute for International Trade published the NAFTA Digest for several years prior to the establishment of NAFTA, and for several subsequent years. It also published the Border Business Indicators using a database established at the University and the International Trade Journal, a highly regarded scholarly quarterly now in its 30th year of publication. The same Special Item funding has also made possible the establishment of a database containing monthly border trade including vehicular, passenger, truck, rail and pedestrian traffic on all major Texas-Mexico border points of entry. This information is available to business, government agencies, other institutions and the general public. Numerous studies and research monographs and publications dealing with economic development and competitiveness of the border region have been made possible through these funds.

**(3) (a) Major Accomplishments to Date:**

The Institute has become a major source of information on international trade with emphasis on Western Hemispheric Trade issues, especially those relating to economic interaction between Texas and Mexico. Several partnerships have been established, including one with Tec de Monterrey, Universidad Regiomontana, Universidad Autonoma de Nuevo Leon to promote scholarly research beneficial to the border region. Scholars from around the world, particularly NAFTA countries and Central and South American countries, attend our annual conference where they present studies that help raise the level of education, the knowledge base, and thus the standard of living of the border region enabling its population to reach for the standard the rest of Texas and the United States to enjoy. Support for undergraduate and graduate research has been made possible through this funding, and the University as a whole has been able to achieve a higher quality manifested in its accreditation by SACS and its School of Business accreditation by AACSB--International. The PhD program in International Business Administration has made the publication of the International Trade Journal even more important to the University. Faculty members serve on its Editorial Advisory Board, and PhD students have engaged in the publication of the Journal through manuscript reviews and other ways, allowing them to apprentice and use the journal as a training platform.

**(3) (b) Major Accomplishments Expected During the Next 2 Years:**

The Institute will continue to publish the highly regarded International Trade Journal, and will maintain a database for manuscript submissions and acceptance information for the Journal. The Institute is also working on a partnership with Taylor & Francis/Routledge, the Journal's current publishers, to get the Journal into the Social Science Citation Index which provides researchers and students with access to bibliographic and citation information needed to find research data, journals and researchers. Routledge, Taylor & Francis Group has also applied to have the International Trade Journal included in the 2018 edition of the Academic Journal Guide. The Institute will also expand cross-border relationships with Mexican and Central American businesses and continue to provide research opportunities in international business for faculty. As the Institute matures and becomes more established in the academic community, it will be able to attract higher level scholars, elevating the scholarly standing of the University. Its International Trade Journal, already well-established in its 30th year of publication, should continue to become increasingly selective and more widely known.

---

**761 Texas A&M International University**

---

**(4) Funding Source Prior to Receiving Special Item Funding:**

These programs did not exist prior to funding and were established thanks to the Special Item.

**(5) Formula Funding:**

N

**(6) Startup Funding:**

N

**(7) Transition Funding:**

N

**(8) Non-general Revenue Sources of Funding:**

None

**(9) Consequences of Not Funding:**

The continuation of funding for the Institute is essential to the State's goal of bringing the border region to a level on par with the rest of the State. Failure to fund the Institute could seriously jeopardize the survival of many businesses in the Texas-Mexico border region. But for such funding, programs to fortify higher education of the border region could not have materialized, and continued funding will support vital research by faculty and students to enhance the border region's competitive position. Furthermore, the continued enhancement of the International Trade Journal's reputation as a source of scholarship for faculty, students, and the general academic community will be seriously hampered if funding were eliminated.

---



---

**761 Texas A&M International University**

---

**Special Item:**     5       **Small Business Development**

**(1) Year Special Item:**           2008  
Original Appropriations:   \$150,000

**(2) Mission of Special Item:**

The mission of the TAMIU Small Business Development Center is to create growth, expansion, innovation, increased productivity and improved management for entrepreneurs. This is accomplished through activities of counseling, training, technical assistance, advocacy, research studies, resource information and coordination with the U.S. Small Business Administration and other community business support services.

TAMIU SBDC services the small businesses and rural communities of Webb, Zapata and Jim Hogg Counties. Our certified professionals work closely with small business owners to achieve success resulting in economic development.

The vision of the TAMIU SBDC is to be recognized as the leader in economic development and delivery of highly effective counseling and training services.

**(3) (a) Major Accomplishments to Date:**

The SBDC program supports the growth and development of the Texas economy by assisting in job creation, economic diversification, and business expansion. And by providing business advising, training, and research activities.

Field offices have been strategically located and allow the TAMIU SBDC to have a certified business advisor at each location. Small business owners can easily visit any of our accessible locations for one-on-one counseling.

Training workshops are held at TAMIU and at the end of each training session, clients are asked to complete a survey. This has provided the opportunity to modify, enhance and diversify training programs to meet the needs of the small business community.

The TAMIU SBDC has also established a “Small Business Management Certification Program”. The program consists of business courses in the areas of starting a business, preparing a business plan, financial control, government opportunities, financial management via QuickBooks, customer services, marketing a business via social media, and legal issues. Individuals are required to complete two online business courses and attend a goal planning session with one of our certified business advisors. Completion of the program enhances their management skills and provides a good foundation for success. Many have expanded their business and/or started a new business due to the certification program.

**(3) (b) Major Accomplishments Expected During the Next 2 Years:**

The TAMIU SBDC will continue to provide the high standard of economic development by increasing capital access, business starts, business expansions, job creation and retention. We will also assist entrepreneurs with confidential consulting services and management and technical training necessary for the improvement of operating and/or starting a business. In addition we will continue with the TAMIU SBDC Small Business Management Certification Program in both Laredo and Zapata, Texas, and plan to expand this program to Hebbronville, Texas.

---

**761 Texas A&M International University**

---

**(4) Funding Source Prior to Receiving Special Item Funding:**

There was no funding source prior to receiving this.

**(5) Formula Funding:**

N

**(6) Startup Funding:**

N

**(7) Transition Funding:**

N

**(8) Non-general Revenue Sources of Funding:**

Primarily federal grants (U.S. Small Business Administration) and some user fees from training activities.

**(9) Consequences of Not Funding:**

The SBDC program is a major contributor toward fulfilling the University's public service mission with over 25,000 businesses served annually. It contributes to our University's research mission with applied economics projects and technology commercialization support and to the teaching mission. TAMIU SBDC Certified Business Advisors conduct market research to help companies export Texas goods and services. In addition, they help new businesses implement the QuickBooks software to better manage revenues, expenses, payroll, benefits and taxes. Without funding, client services like these would be reduced or eliminated. There would also be a loss of federal funds available to support business development extension services in the 79-county South-West Texas Border Region which would affect all partner-institutions of the Regional SBDC network.

---

---

**761 Texas A&M International University**

---

**Special Item:**     6     **Interdisciplinary Engineering Degree Program**

**(1) Year Special Item:**             2018  
Original Appropriations:   \$3,000,000

**(2) Mission of Special Item:**

This item would permit Texas A&M International University to expand its existing engineering offerings to include a focus on petroleum engineering and computer science.

- Supports 12 faculty positions and 6 graduate students, along with equipment and infrastructure in specialized laboratories, as the program is built-out over 6 years.
- Leverages partnerships with the oil industry in South Texas and supplements existing donations and pledges by these partners amounting to \$2,000,000.
- Permits an institution serving a 92% Hispanic population to expand offerings in critical STEM fields.
- Expands ability to compete for federal grants in STEM fields and to work with the Department of Homeland Security.
- Creates an opportunity not now available at any of the seven South Texas universities.

**(3) (a) Major Accomplishments to Date:**

New special item will fund 12 FTE faculty and 6 part-time graduate students.

**(3) (b) Major Accomplishments Expected During the Next 2 Years:**

- The goals of the Higher Education Coordinating Board's 60x30TX plan will be supported.
- The number of highly competent, well-qualified engineers who will be employed in the oil/energy and computer science and security industries in Texas will be increased.
- The State's underserved population will become productive participants in the Texas economy, while also addressing the shortage of engineers in South Texas.

**(4) Funding Source Prior to Receiving Special Item Funding:**

Special Item does not exist at present.

**(5) Formula Funding:**

N

**(6) Startup Funding:**

Y

**(7) Transition Funding:**

N

---

**761 Texas A&M International University**

---

**(8) Non-general Revenue Sources of Funding:**

Donations and pledges are onetime funding and will not be ongoing.

**(9) Consequences of Not Funding:**

Program implementation would be severely delayed as faculty and equipment purchases would be phased in only as funding becomes available.

---

---

**761 Texas A&M International University**

---

**Special Item:**     7           **Si Texas Border Health Initiative**

**(1) Year Special Item:**           2018  
Original Appropriations:   \$1,200,000

**(2) Mission of Special Item:**

A collaborative effort between Texas A&M International University and nine community healthcare service providers, this item will support a fully coordinated, comprehensive healthcare delivery system in Laredo and the surrounding region.

- Supports 7 nursing, healthcare, and support staff to manage a system of integrated behavioral health to provide a continuum of care for those with obesity, diabetes and depression.
- Magnifies impact of a \$1,200,000 annual grant from Methodist Healthcare Ministries which must be matched dollar for dollar.
- Creates a more informed community regarding healthcare services in the region related to obesity, diabetes and mental health.
- Provides more thorough health screenings with better coordination of care.
- Leads to greater follow-up care through a Prevention Care Model Unit to increase the likelihood that clients attend appointments, take medication, and follow their treatment plan.

**(3) (a) Major Accomplishments to Date:**

New special item will fund 7 FTE faculty and support staff.

**(3) (b) Major Accomplishments Expected During the Next 2 Years:**

- This effort will provide a continuum of care for those with obesity, diabetes, and depression—conditions prevalent in lower income regions of South Texas.
- The initiative seeks to increase the effectiveness of existing services by increasing the level of integration of behavioral health—from prevention to compliance with medical treatment plans—reducing high-cost, reactive care visits to emergency rooms.

**(4) Funding Source Prior to Receiving Special Item Funding:**

Special Item does not exist at present.

**(5) Formula Funding:**

N

**(6) Startup Funding:**

Y

**(7) Transition Funding:**

N

---

**761 Texas A&M International University**

---

**(8) Non-general Revenue Sources of Funding:**

Grant matching funds through FY 2021.

**(9) Consequences of Not Funding:**

Any reduction in funding will lead to a scaled back implementation by the University, as the grant requires a dollar for dollar match. This would lessen the effectiveness of the program's impact.

---